



Cyclophilin D Polyclonal Antibody

Catalog No	BYab-04308
Isotype	IgG
Reactivity	Human;Mouse;Rat
Applications	WB;IHC;IF;ELISA
Gene Name	PPID
Protein Name	Peptidyl-prolyl cis-trans isomerase D
Immunogen	The antiserum was produced against synthesized peptide derived from the C-terminal region of human PPID. AA range:321-370
Specificity	Cyclophilin D Polyclonal Antibody detects endogenous levels of Cyclophilin D protein.
Formulation	Liquid in PBS containing 50% glycerol, 0.5% BSA and 0.02% sodium azide.
Source	Polyclonal, Rabbit,IgG
Purification	The antibody was affinity-purified from rabbit antiserum by affinity-chromatography using epitope-specific immunogen.
Dilution	WB: 1/500 - 1/2000. IHC-p: 1:100-300 ELISA: 1/20000.. IF 1:50-200
Concentration	1 mg/ml
Purity	≥90%
Storage Stability	-20°C/1 year
Synonyms	PPID; CYP40; CYPD; Peptidyl-prolyl cis-trans isomerase D; PPIase D; 40 kDa peptidyl-prolyl cis-trans isomerase; Cyclophilin-40; CYP-40; Cyclophilin-related protein; Rotamase D
Observed Band	40kD
Cell Pathway	Cytoplasm . Nucleus, nucleolus . Nucleus, nucleoplasm .
Tissue Specificity	Widely expressed.
Function	catalytic activity:Peptidylproline (omega=180) = peptidylproline (omega=0).,enzyme regulation:Less sensitive to inhibition by cyclosporin A than is CYP-18.,function:PPIases accelerate the folding of proteins.,function:PPIases accelerate the folding of proteins. It catalyzes the cis-trans isomerization of proline imidic peptide bonds in oligopeptides.,online information:Cyclophilin entry,similarity:Belongs to the cyclophilin-type PPIase family.,similarity:Belongs to the cyclophilin-type PPIase family. PPIase D subfamily.,similarity:Contains 1 PPIase cyclophilin-type domain.,similarity:Contains 3 TPR repeats.,subunit:Binds ESR1.,tissue specificity:Widely expressed.,

Nanjing BYabscience technology Co.,Ltd



Background

The protein encoded by this gene is a member of the peptidyl-prolyl cis-trans isomerase (PPIase) family. PPIases catalyze the cis-trans isomerization of proline imidic peptide bonds in oligopeptides and accelerate the folding of proteins. This protein has been shown to possess PPIase activity and, similar to other family members, can bind to the immunosuppressant cyclosporin A. [provided by RefSeq, Jul 2008],

matters needing attention

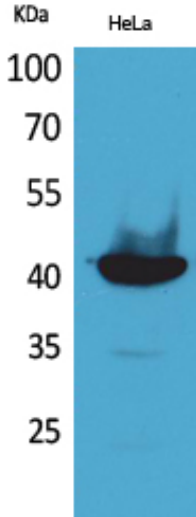
Avoid repeated freezing and thawing!

Usage suggestions

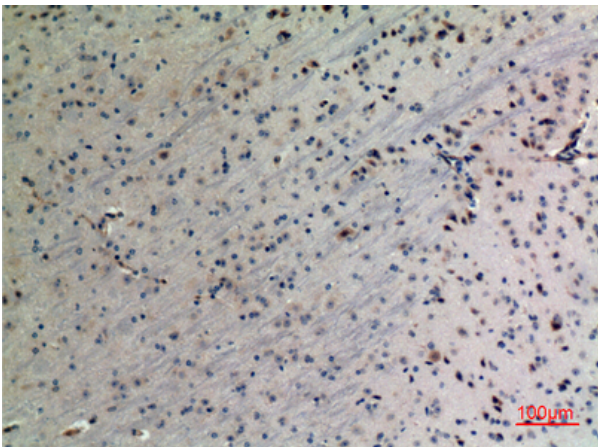
This product can be used in immunological reaction related experiments. For more information, please consult technical personnel.



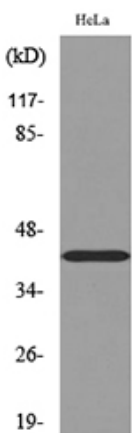
Products Images



Western Blot analysis of HeLa cells using Cyclophilin D Polyclonal Antibody. Secondary antibody(catalog#:RS0002) was diluted at 1:20000



Immunohistochemical analysis of paraffin-embedded mouse-brain, antibody was diluted at 1:100



Western blot analysis of lysate from HeLa cells, using PPID Antibody.