



# DPP7 Polyclonal Antibody

<b>Catalog No</b>	BYab-04305
<b>Isotype</b>	IgG
<b>Reactivity</b>	Human;Rat;Mouse;
<b>Applications</b>	WB;IHC;IF;ELISA
<b>Gene Name</b>	DPP7
<b>Protein Name</b>	Dipeptidyl peptidase 2
<b>Immunogen</b>	Synthesized peptide derived from the C-terminal region of human DPP7.
<b>Specificity</b>	DPP7 Polyclonal Antibody detects endogenous levels of DPP7 protein.
<b>Formulation</b>	Liquid in PBS containing 50% glycerol, 0.5% BSA and 0.02% sodium azide.
<b>Source</b>	Polyclonal, Rabbit,IgG
<b>Purification</b>	The antibody was affinity-purified from rabbit antiserum by affinity-chromatography using epitope-specific immunogen.
<b>Dilution</b>	WB: 1/500 - 1/2000. IHC-p: 1:100-300 ELISA: 1/20000.. IF 1:50-200
<b>Concentration</b>	1 mg/ml
<b>Purity</b>	≥90%
<b>Storage Stability</b>	-20°C/1 year
<b>Synonyms</b>	DPP7; DPP2; QPP; Dipeptidyl peptidase 2; Dipeptidyl aminopeptidase II; Dipeptidyl peptidase 7; Dipeptidyl peptidase II; DPP II; Quiescent cell proline dipeptidase
<b>Observed Band</b>	54kD
<b>Cell Pathway</b>	Lysosome . Cytoplasmic vesicle . Secreted .
<b>Tissue Specificity</b>	Detected in seminal plasma (at protein level).
<b>Function</b>	catalytic activity:Release of an N-terminal dipeptide, Xaa-Yaa-[-, preferentially when Yaa is Ala or Pro. Substrates are oligopeptides, preferentially tripeptides.,function:Plays an important role in the degradation of some oligopeptides.,PTM:N-glycosylated.,similarity:Belongs to the peptidase S28 family.,subunit:Homodimer.,
<b>Background</b>	The protein encoded by this gene is a post-proline cleaving aminopeptidase expressed in quiescent lymphocytes. The resting lymphocytes are maintained through suppression of apoptosis, a state which is disrupted by inhibition of this novel serine protease. The enzyme has strong sequence homology with

Nanjing BYabscience technology Co.,Ltd



prolylcarboxypeptidase and is active at both acidic and neutral pH. [provided by RefSeq, Jul 2008],

**matters needing attention**

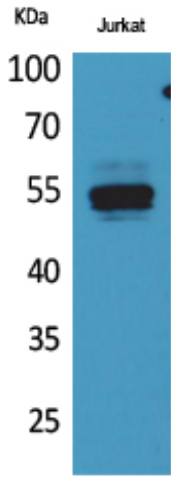
Avoid repeated freezing and thawing!

**Usage suggestions**

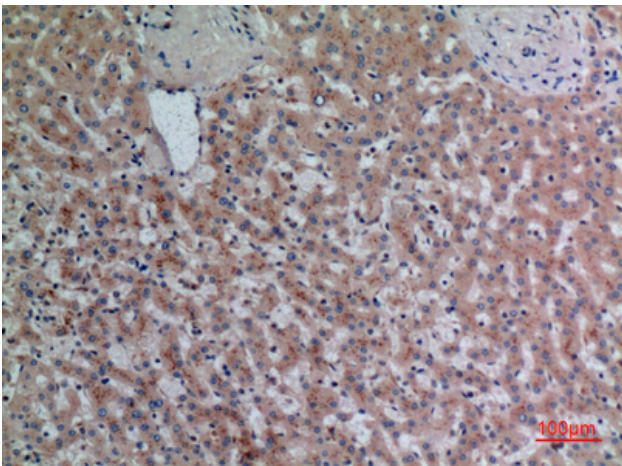
This product can be used in immunological reaction related experiments. For more information, please consult technical personnel.



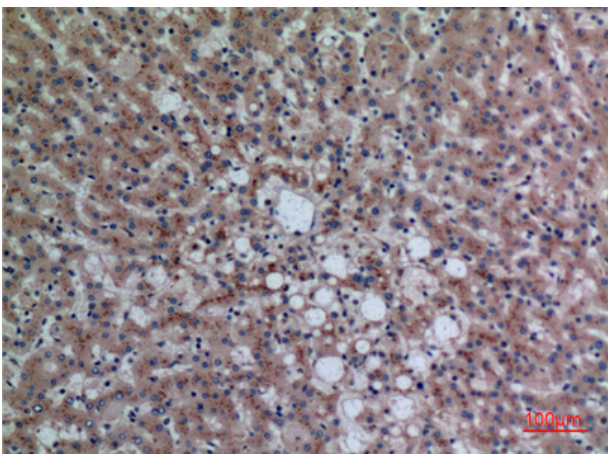
## Products Images



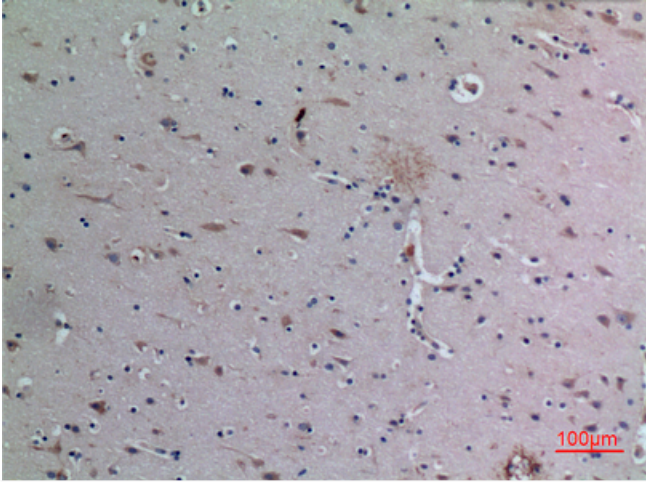
Western Blot analysis of Jurkat cells using DPP7 Polyclonal Antibody. Secondary antibody(catalog#:RS0002) was diluted at 1:20000



Immunohistochemical analysis of paraffin-embedded human-liver, antibody was diluted at 1:100



Immunohistochemical analysis of paraffin-embedded human-liver, antibody was diluted at 1:100



Immunohistochemical analysis of paraffin-embedded human-brain, antibody was diluted at 1:100