



# SS-56 Polyclonal Antibody

|                           |   |
|---------------------------|---|
| <b>Catalog No</b>         | BYab-04301  |
| <b>Isotype</b>            | IgG   |
| <b>Reactivity</b>         | Human;Rat;Mouse;  |
| <b>Applications</b>       | WB;IHC;IF;ELISA   |
| <b>Gene Name</b>          | TRIM68  |
| <b>Protein Name</b>       | E3 ubiquitin-protein ligase TRIM68  |
| <b>Immunogen</b>          | Synthesized peptide derived from the Internal region of human SS-56.  |
| <b>Specificity</b>        | SS-56 Polyclonal Antibody detects endogenous levels of SS-56 protein.   |
| <b>Formulation</b>        | Liquid in PBS containing 50% glycerol, 0.5% BSA and 0.02% sodium azide.   |
| <b>Source</b>             | Polyclonal, Rabbit,IgG  |
| <b>Purification</b>       | The antibody was affinity-purified from rabbit antiserum by affinity-chromatography using epitope-specific immunogen.   |
| <b>Dilution</b>           | WB: 1/500 - 1/2000. IHC-p: 1:100-300 ELISA: 1/40000.. IF 1:50-200   |
| <b>Concentration</b>      | 1 mg/ml   |
| <b>Purity</b>             | ≥90%  |
| <b>Storage Stability</b>  | -20°C/1 year  |
| <b>Synonyms</b>           | TRIM68; GC109; RNF137; SS56; E3 ubiquitin-protein ligase TRIM68; RING finger protein 137; SSA protein SS-56; SS-56; Tripartite motif-containing protein 68  |
| <b>Observed Band</b>      | 56kD  |
| <b>Cell Pathway</b>       | Cytoplasm, perinuclear region. Nucleus. Colocalized with AR in nucleus.   |
| <b>Tissue Specificity</b> | Widely expressed. Expressed at high levels in prostate cancer cell lines. Up-regulation could be restricted to androgen-dependent cells.  |
| <b>Function</b>           | disease:Target of immune response in patients with systemic lupus erythematosus (SLE), primary Sjogren syndrome or HIV-1 infection.,similarity:Belongs to the TRIM/RBCC family.,similarity:Contains 1 B box-type zinc finger.,similarity:Contains 1 B30.2/SPRY domain.,similarity:Contains 1 RING-type zinc finger.,tissue specificity:Detected in all tissues. High expression is noted in spleen and in fetal liver., |
| <b>Background</b>         | This gene encodes a member of the tripartite motif-containing protein family, whose members are characterized by a &quot;really interesting new gene&quot; (RING) finger domain, a zinc-binding B-box motif, and a coiled-coil region.  |

Nanjing BYabscience technology Co.,Ltd



Members of this family function as E3 ubiquitin ligases and are involved in a broad range of biological processes. This gene regulates the activation of nuclear receptors, such as androgen receptor, and has been implicated in development of prostate cancer cells, where its expression increases in response to a downregulation of microRNAs. In addition, this gene participates in viral defense regulation as a negative regulator of interferon-beta. Alternative splicing results in multiple transcript variants. [provided by RefSeq, Jan 2015],

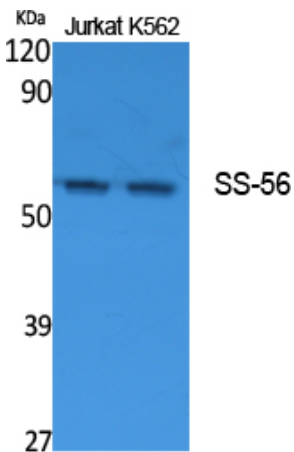
**matters needing attention**

Avoid repeated freezing and thawing!

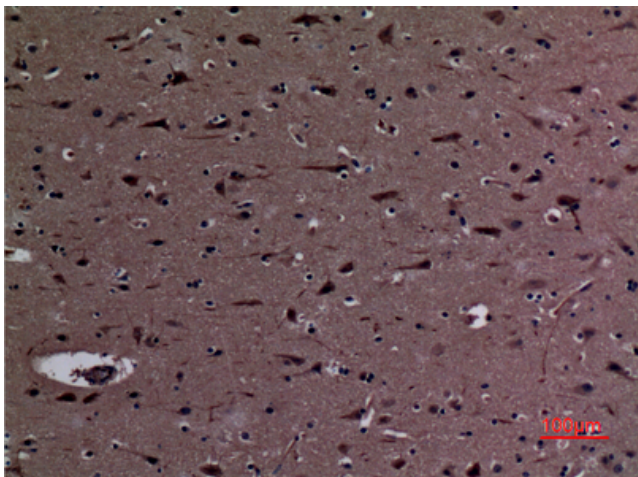
**Usage suggestions**

This product can be used in immunological reaction related experiments. For more information, please consult technical personnel.

## Products Images



Western Blot analysis of extracts from Jurkat, K562 cells, using SS-56 Polyclonal Antibody. Secondary antibody(catalog#:RS0002) was diluted at 1:20000



Immunohistochemical analysis of paraffin-embedded human-brain, antibody was diluted at 1:100