



# EEA1 Polyclonal Antibody

<b>Catalog No</b>	BYab-04296
<b>Isotype</b>	IgG
<b>Reactivity</b>	Human;Mouse
<b>Applications</b>	WB;ELISA
<b>Gene Name</b>	EEA1
<b>Protein Name</b>	Early endosome antigen 1
<b>Immunogen</b>	The antiserum was produced against synthesized peptide derived from human EEA1. AA range:205-254
<b>Specificity</b>	EEA1 Polyclonal Antibody detects endogenous levels of EEA1 protein.
<b>Formulation</b>	Liquid in PBS containing 50% glycerol, 0.5% BSA and 0.02% sodium azide.
<b>Source</b>	Polyclonal, Rabbit,IgG
<b>Purification</b>	The antibody was affinity-purified from rabbit antiserum by affinity-chromatography using epitope-specific immunogen.
<b>Dilution</b>	Western Blot: 1/500 - 1/2000. ELISA: 1/20000. Not yet tested in other applications.
<b>Concentration</b>	1 mg/ml
<b>Purity</b>	≥90%
<b>Storage Stability</b>	-20°C/1 year
<b>Synonyms</b>	EEA1; ZFYVE2; Early endosome antigen 1; Endosome-associated protein p162; Zinc finger FYVE domain-containing protein 2
<b>Observed Band</b>	162kD
<b>Cell Pathway</b>	Cytoplasm. Early endosome membrane; Peripheral membrane protein.
<b>Tissue Specificity</b>	Aorta,Cervix carcinoma,Fetal brain cortex,Skeletal muscle,
<b>Function</b>	disease:Antibodies against EEA1 are found in sera from patients with subacute cutaneous lupus erythematosus and other autoimmune diseases.,domain:The FYVE-type zinc finger domain mediates interactions with phosphatidylinositol 3-phosphate.,function:Binds phospholipid vesicles containing phosphatidylinositol 3-phosphate and participates in endosomal trafficking.,similarity:Contains 1 C2H2-type zinc finger.,similarity:Contains 1 FYVE-type zinc finger.,subunit:Homodimer. Binds STX6. Binds RAB5A, RAB5B, RAB5C and RAB22A that have been activated by GTP-binding.,

Nanjing BYabscience technology Co.,Ltd



**Background**

disease:Antibodies against EEA1 are found in sera from patients with subacute cutaneous lupus erythematosus and other autoimmune diseases.,domain:The FYVE-type zinc finger domain mediates interactions with phosphatidylinositol 3-phosphate.,function:Binds phospholipid vesicles containing phosphatidylinositol 3-phosphate and participates in endosomal trafficking.,similarity:Contains 1 C2H2-type zinc finger.,similarity:Contains 1 FYVE-type zinc finger.,subunit:Homodimer. Binds STX6. Binds RAB5A, RAB5B, RAB5C and RAB22A that have been activated by GTP-binding.,

**matters needing attention**

Avoid repeated freezing and thawing!

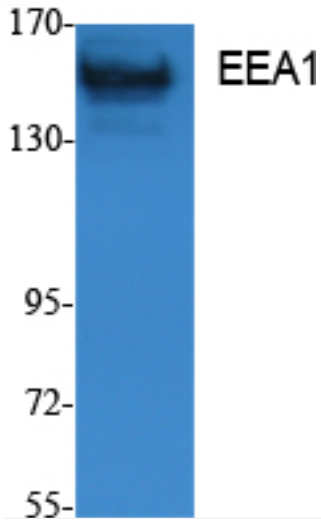
**Usage suggestions**

This product can be used in immunological reaction related experiments. For more information, please consult technical personnel.

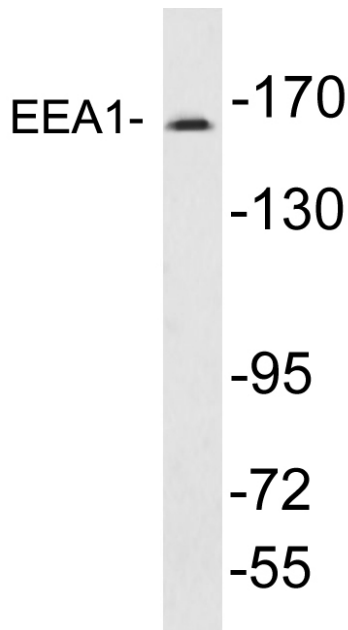


## Products Images

(kD)



Western Blot analysis of extracts from K562 cells, using EEA1 Polyclonal Antibody. Secondary antibody(catalog#:RS0002) was diluted at 1:20000



Western blot analysis of lysates from A431 cells , using EEA1 antibody.