



β -1,3-Gal-T1 Polyclonal Antibody

Catalog No	BYab-04286
Isotype	IgG
Reactivity	Human;Mouse
Applications	WB;ELISA
Gene Name	B3GALT1
Protein Name	Beta-1,3-galactosyltransferase 1
Immunogen	The antiserum was produced against synthesized peptide derived from human B3GALT1. AA range:61-110
Specificity	β -1,3-Gal-T1 Polyclonal Antibody detects endogenous levels of β -1,3-Gal-T1 protein.
Formulation	Liquid in PBS containing 50% glycerol, 0.5% BSA and 0.02% sodium azide.
Source	Polyclonal, Rabbit,IgG
Purification	The antibody was affinity-purified from rabbit antiserum by affinity-chromatography using epitope-specific immunogen.
Dilution	Western Blot: 1/500 - 1/2000. ELISA: 1/20000. Not yet tested in other applications.
Concentration	1 mg/ml
Purity	\geq 90%
Storage Stability	-20°C/1 year
Synonyms	B3GALT1; Beta-1; 3-galactosyltransferase 1; Beta-1,3-GalTase 1; Beta3Gal-T1; Beta3GalT1; UDP-galactose:beta-N-acetyl-glucosamine-beta-1,3-galactosyltransferase 1
Observed Band	36kD
Cell Pathway	Golgi apparatus membrane ; Single-pass type II membrane protein .
Tissue Specificity	Detected in brain and colon mucosa and to a lesser extent in colon adenocarcinoma cells.
Function	cofactor:Manganese.,function:Beta-1,3-galactosyltransferase that transfers galactose from UDP-galactose to substrates with a terminal beta-N-acetylglucosamine (beta-GlcNAc) residue. Involved in the biosynthesis of the carbohydrate moieties of glycolipids and glycoproteins. Inactive towards substrates with terminal alpha-N-acetylglucosamine (alpha-GlcNAc) or alpha-N-acetylgalactosamine (alpha-GalNAc) residues.,online information:Beta-1,3-galactosyltransferase 1,online information:GlycoGene database,pathway:Protein modification; protein glycosylation.,similarity:Belongs

Nanjing BYabscience technology Co.,Ltd



to the glycosyltransferase 31 family.,tissue specificity:Detected in brain and colon mucosa and to a lesser extent in colon adenocarcinoma cells.,

Background

This gene is a member of the beta-1,3-galactosyltransferase (beta3GalT) gene family. This family encodes type II membrane-bound glycoproteins with diverse enzymatic functions using different donor substrates (UDP-galactose and UDP-N-acetylglucosamine) and different acceptor sugars (N-acetylglucosamine, galactose, N-acetylgalactosamine). The beta3GalT genes are distantly related to the Drosophila Brainiac gene and have the protein coding sequence contained in a single exon. The beta3GalT proteins also contain conserved sequences not found in the beta4GalT or alpha3GalT proteins. The carbohydrate chains synthesized by these enzymes are designated as type 1, whereas beta4GalT enzymes synthesize type 2 carbohydrate chains. The ratio of type 1:type 2 chains changes during embryogenesis. By sequence similarity, the beta3GalT genes fall into at least two groups: beta3GalT4 and 4 other beta3

matters needing attention

Avoid repeated freezing and thawing!

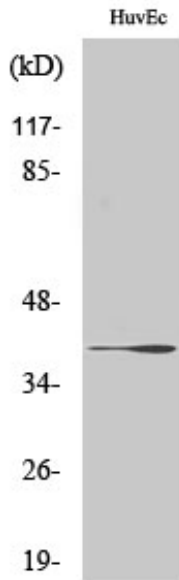
Usage suggestions

This product can be used in immunological reaction related experiments. For more information, please consult technical personnel.

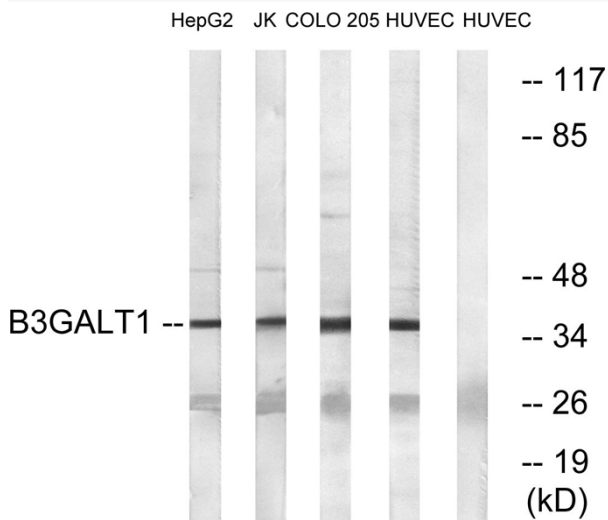
Nanjing BYabscience technology Co.,Ltd



Products Images

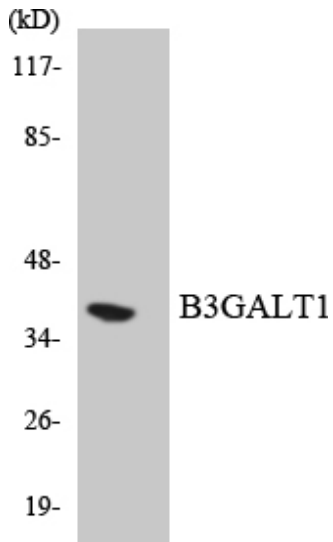


Western Blot analysis of various cells using β -1,3-Gal-T1 Polyclonal Antibody. Secondary antibody(catalog#:RS0002) was diluted at 1:20000



Western blot analysis of lysates from HUVEC, COLO, Jurkat, and HepG2 cells, using B3GALT1 Antibody. The lane on the right is blocked with the synthesized peptide.

Nanjing BYabscience technology Co.,Ltd



Western blot analysis of the lysates from HUVEC cells using B3GALT1 antibody.