



α 4Gn-T Polyclonal Antibody

Catalog No	BYab-04285
Isotype	IgG
Reactivity	Human;Rat;Mouse;
Applications	WB;IHC;IF;ELISA
Gene Name	A4GNT
Protein Name	Alpha-1,4-N-acetylglucosaminyltransferase
Immunogen	The antiserum was produced against synthesized peptide derived from human A4GNT. AA range:31-80
Specificity	α 4Gn-T Polyclonal Antibody detects endogenous levels of α 4Gn-T protein.
Formulation	Liquid in PBS containing 50% glycerol, 0.5% BSA and 0.02% sodium azide.
Source	Polyclonal, Rabbit,IgG
Purification	The antibody was affinity-purified from rabbit antiserum by affinity-chromatography using epitope-specific immunogen.
Dilution	WB: 1/500 - 1/2000. IHC: 1/100 - 1/300. ELISA: 1/40000.. IF 1:50-200
Concentration	1 mg/ml
Purity	\geq 90%
Storage Stability	-20°C/1 year
Synonyms	A4GNT; Alpha-1; 4-N-acetylglucosaminyltransferase; Alpha4GnT
Observed Band	39kD
Cell Pathway	Golgi apparatus membrane ; Single-pass type II membrane protein .
Tissue Specificity	Detected in stomach and pancreas.
Function	domain:The conserved DXD motif is involved in enzyme activity.,function:Necessary for the synthesis of type III mucin. Catalyzes the transfer of N-acetylglucosamine (GlcNAc) to core 2 branched O-glycans.,online information:Alpha-1,4-N-acetylglucosaminyltransferase,online information:GlycoGene database,pathway:Protein modification; protein glycosylation.,similarity:Belongs to the glycosyltransferase 32 family.,tissue specificity:Detected in stomach and pancreas.,
Background	This gene encodes a protein from the glycosyltransferase 32 family. The enzyme catalyzes the transfer of N-acetylglucosamine (GlcNAc) to core 2 branched O-glycans. It forms a unique glycan, GlcNAc α 1-4Gal β 2-6Man α 6 and is

Nanjing BYabscience technology Co.,Ltd



largely associated with the Golgi apparatus membrane. [provided by RefSeq, Jul 2008],

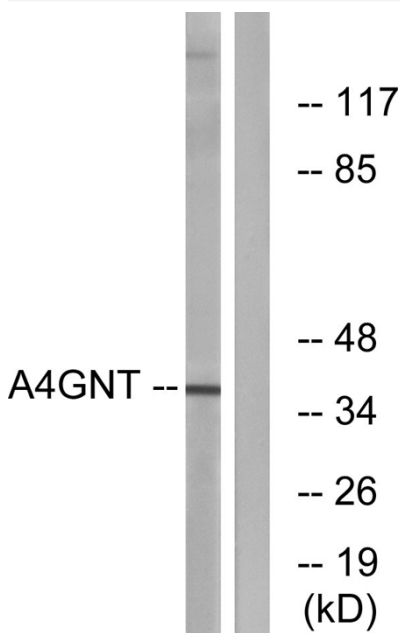
matters needing attention

Avoid repeated freezing and thawing!

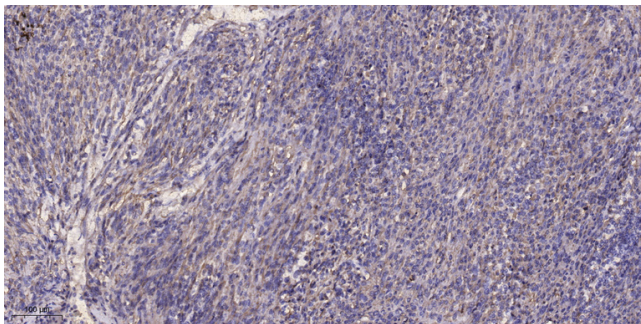
Usage suggestions

This product can be used in immunological reaction related experiments. For more information, please consult technical personnel.

Products Images



Western blot analysis of lysates from K562 cells, using A4GNT Antibody. The lane on the right is blocked with the synthesized peptide.



Immunohistochemical analysis of paraffin-embedded human Colon cancer. 1, Antibody was diluted at 1:200(4° overnight). 2, Tris-EDTA,pH9.0 was used for antigen retrieval. 3,Secondary antibody was diluted at 1:200(room temperature, 45min).