



ZIP9 Polyclonal Antibody

Catalog No	BYab-04276
Isotype	IgG
Reactivity	Human;Rat
Applications	WB;ELISA
Gene Name	SLC39A9
Protein Name	Zinc transporter ZIP9
Immunogen	The antiserum was produced against synthesized peptide derived from human SLC39A9. AA range:101-150
Specificity	ZIP9 Polyclonal Antibody detects endogenous levels of ZIP9 protein.
Formulation	Liquid in PBS containing 50% glycerol, 0.5% BSA and 0.02% sodium azide.
Source	Polyclonal, Rabbit,IgG
Purification	The antibody was affinity-purified from rabbit antiserum by affinity-chromatography using epitope-specific immunogen.
Dilution	Western Blot: 1/500 - 1/2000. ELISA: 1/10000. Not yet tested in other applications.
Concentration	1 mg/ml
Purity	≥90%
Storage Stability	-20°C/1 year
Synonyms	SLC39A9; ZIP9; Zinc transporter ZIP9; Solute carrier family 39 member 9; Zrt- and Irt-like protein 9; ZIP-9
Observed Band	33kD
Cell Pathway	Membrane ; Multi-pass membrane protein .
Tissue Specificity	Coronary artery,Duodenum,Placenta,Skin,
Function	function:May act as a zinc-influx transporter.,similarity:Belongs to the ZIP transporter (TC 2.A.5) family.,
Background	function:May act as a zinc-influx transporter.,similarity:Belongs to the ZIP transporter (TC 2.A.5) family.,
matters needing attention	Avoid repeated freezing and thawing!

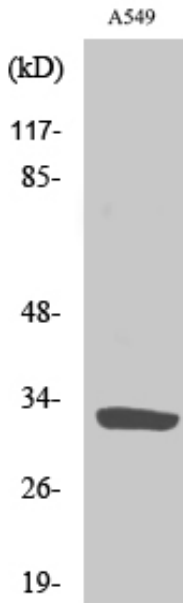
Nanjing BYabscience technology Co.,Ltd



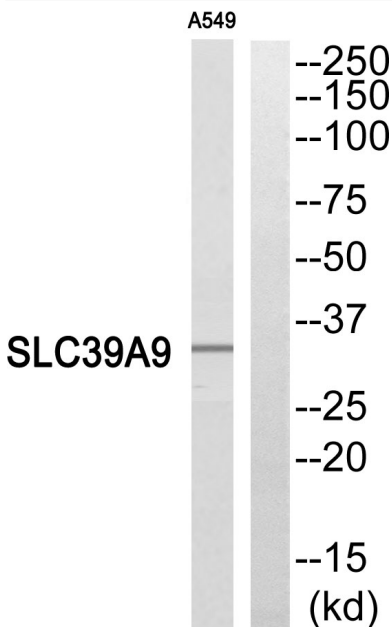
Usage suggestions

This product can be used in immunological reaction related experiments. For more information, please consult technical personnel.

Products Images

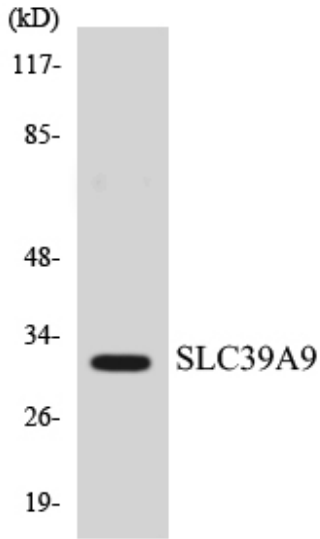


Western Blot analysis of various cells using ZIP9 Polyclonal Antibody. Secondary antibody(catalog#:RS0002) was diluted at 1:20000



Western blot analysis of SLC39A9 Antibody. The lane on the right is blocked with the SLC39A9 peptide.

Nanjing BYabscience technology Co.,Ltd



Western blot analysis of the lysates from HeLa cells using SLC39A9 antibody.