



# ZIP7 Polyclonal Antibody

<b>Catalog No</b>	BYab-04275
<b>Isotype</b>	IgG
<b>Reactivity</b>	Human;Mouse;Rat
<b>Applications</b>	WB;ELISA
<b>Gene Name</b>	SLC39A7
<b>Protein Name</b>	Zinc transporter SLC39A7
<b>Immunogen</b>	The antiserum was produced against synthesized peptide derived from human SLC39A7. AA range:131-180
<b>Specificity</b>	ZIP7 Polyclonal Antibody detects endogenous levels of ZIP7 protein.
<b>Formulation</b>	Liquid in PBS containing 50% glycerol, 0.5% BSA and 0.02% sodium azide.
<b>Source</b>	Polyclonal, Rabbit,IgG
<b>Purification</b>	The antibody was affinity-purified from rabbit antiserum by affinity-chromatography using epitope-specific immunogen.
<b>Dilution</b>	Western Blot: 1/500 - 1/2000. ELISA: 1/5000. Not yet tested in other applications.
<b>Concentration</b>	1 mg/ml
<b>Purity</b>	≥90%
<b>Storage Stability</b>	-20°C/1 year
<b>Synonyms</b>	SLC39A7; HKE4; RING5; Zinc transporter SLC39A7; Histidine-rich membrane protein Ke4; Really interesting new gene 5 protein; Solute carrier family 39 member 7
<b>Observed Band</b>	50kD
<b>Cell Pathway</b>	Endoplasmic reticulum membrane ; Multi-pass membrane protein . Golgi apparatus, cis-Golgi network membrane ; Multi-pass membrane protein .
<b>Tissue Specificity</b>	Widely expressed.
<b>Function</b>	similarity:Belongs to the ZIP transporter (TC 2.A.5) family. KE4/Catsup subfamily.,tissue specificity:Major expression in placenta, lung, kidney and pancreas.,
<b>Background</b>	The protein encoded by this gene transports zinc from the Golgi and endoplasmic reticulum to the cytoplasm. This transport may be important for activation of tyrosine kinases, some of which could be involved in cancer progression. Therefore, modulation of the encoded protein could be useful as a therapeutic agent against cancer. Alternative splicing results in multiple transcript

**Nanjing BYabscience technology Co.,Ltd**



variants. [provided by RefSeq, Jan 2014],

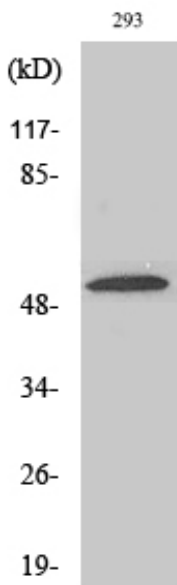
**matters needing attention**

Avoid repeated freezing and thawing!

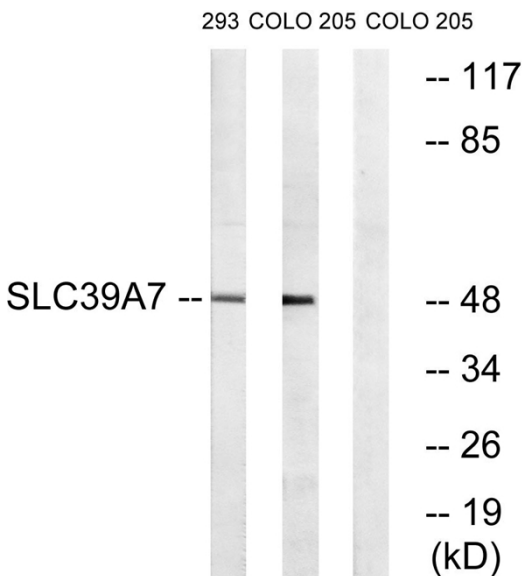
**Usage suggestions**

This product can be used in immunological reaction related experiments. For more information, please consult technical personnel.

## Products Images

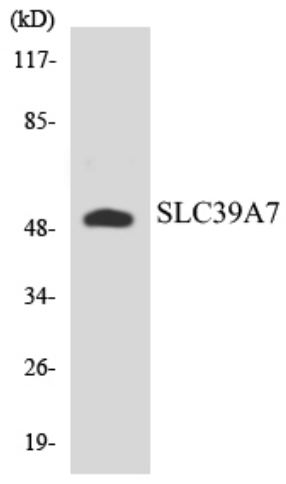


Western Blot analysis of various cells using ZIP7 Polyclonal Antibody. Secondary antibody(catalog#:RS0002) was diluted at 1:20000



Western blot analysis of lysates from 293 and COLO cells, using SLC39A7 Antibody. The lane on the right is blocked with the synthesized peptide.

**Nanjing BYabscience technology Co.,Ltd**



Western blot analysis of the lysates from HUVEC cells using SLC39A7 antibody.