



# VPS26B Polyclonal Antibody

<b>Catalog No</b>	BYab-04265
<b>Isotype</b>	IgG
<b>Reactivity</b>	Human;Mouse
<b>Applications</b>	WB;ELISA
<b>Gene Name</b>	VPS26B
<b>Protein Name</b>	Vacuolar protein sorting-associated protein 26B
<b>Immunogen</b>	The antiserum was produced against synthesized peptide derived from human VPS26B. AA range:231-280
<b>Specificity</b>	VPS26B Polyclonal Antibody detects endogenous levels of VPS26B protein.
<b>Formulation</b>	Liquid in PBS containing 50% glycerol, 0.5% BSA and 0.02% sodium azide.
<b>Source</b>	Polyclonal, Rabbit,IgG
<b>Purification</b>	The antibody was affinity-purified from rabbit antiserum by affinity-chromatography using epitope-specific immunogen.
<b>Dilution</b>	Western Blot: 1/500 - 1/2000. ELISA: 1/10000. Not yet tested in other applications.
<b>Concentration</b>	1 mg/ml
<b>Purity</b>	≥90%
<b>Storage Stability</b>	-20°C/1 year
<b>Synonyms</b>	VPS26B; Vacuolar protein sorting-associated protein 26B; Vesicle protein sorting 26B
<b>Observed Band</b>	45kD
<b>Cell Pathway</b>	Cytoplasm . Membrane; Peripheral membrane protein . Early endosome . Late endosome . Localizes to early and late endosomal structures (By similarity). .
<b>Tissue Specificity</b>	Eye,Lung,Placenta,
<b>Function</b>	function:Probable component of the retromer complex, a complex required to retrieve lysosomal enzyme receptors (IGF2R and M6PR) from endosomes to the trans-Golgi network.,PTM:Phosphorylated upon DNA damage, probably by ATM or ATR.,similarity:Belongs to the VPS26 family.,subcellular location:Does not localize to endosomes.,subunit:Probable component of the retromer complex composed of VPS26 (VPS26A or VPS26B), VPS29, VPS35, SNX1 and SNX2. Interacts directly with VPS35.,
<b>Background</b>	function:Probable component of the retromer complex, a complex required to retrieve lysosomal enzyme receptors (IGF2R and M6PR) from endosomes to the

Nanjing BYabscience technology Co.,Ltd



trans-Golgi network.,PTM:Phosphorylated upon DNA damage, probably by ATM or ATR.,similarity:Belongs to the VPS26 family.,subcellular location:Does not localize to endosomes.,subunit:Probable component of the retromer complex composed of VPS26 (VPS26A or VPS26B), VPS29, VPS35, SNX1 and SNX2. Interacts directly with VPS35.,

**matters needing attention**

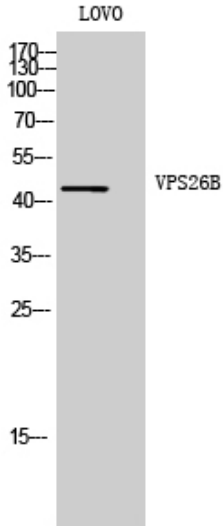
Avoid repeated freezing and thawing!

**Usage suggestions**

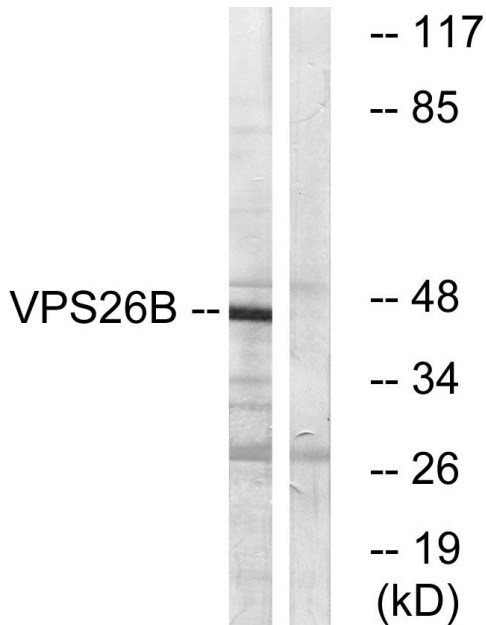
This product can be used in immunological reaction related experiments. For more information, please consult technical personnel.



## Products Images



Western Blot analysis of LOVO cells using VPS26B Polyclonal Antibody. Secondary antibody(catalog#:RS0002) was diluted at 1:20000



Western blot analysis of lysates from LOVO cells, using VPS26B Antibody. The lane on the right is blocked with the synthesized peptide.