



# Trypsin-3 Polyclonal Antibody

<b>Catalog No</b>	BYab-04259
<b>Isotype</b>	IgG
<b>Reactivity</b>	Human;Rat;Mouse;
<b>Applications</b>	WB;ELISA
<b>Gene Name</b>	PRSS3
<b>Protein Name</b>	Trypsin-3
<b>Immunogen</b>	The antiserum was produced against synthesized peptide derived from human Trypsin-3. AA range:117-166
<b>Specificity</b>	Trypsin-3 Polyclonal Antibody detects endogenous levels of Trypsin-3 protein.
<b>Formulation</b>	Liquid in PBS containing 50% glycerol, 0.5% BSA and 0.02% sodium azide.
<b>Source</b>	Polyclonal, Rabbit,IgG
<b>Purification</b>	The antibody was affinity-purified from rabbit antiserum by affinity-chromatography using epitope-specific immunogen.
<b>Dilution</b>	Western Blot: 1/500 - 1/2000. ELISA: 1/40000. Not yet tested in other applications.
<b>Concentration</b>	1 mg/ml
<b>Purity</b>	≥90%
<b>Storage Stability</b>	-20°C/1 year
<b>Synonyms</b>	PRSS3; PRSS4; TRY3; TRY4; Trypsin-3; Brain trypsinogen; Mesotrypsinogen; Serine protease 3; Serine protease 4; Trypsin III; Trypsin IV
<b>Observed Band</b>	32kD
<b>Cell Pathway</b>	Secreted .
<b>Tissue Specificity</b>	Detected in pancreas and pancreatic fluid (at protein level) (PubMed:6698368). Expressed in pancreas and brain (PubMed:8294000). Detected in ileum (PubMed:12021776).
<b>Function</b>	catalytic activity:Preferential cleavage: Arg-I-Xaa, Lys-I-Xaa.,cofactor:Binds 1 calcium ion per subunit.,similarity:Belongs to the peptidase S1 family.,similarity:Contains 1 peptidase S1 domain.,tissue specificity:Pancreas and brain.,
<b>Background</b>	This gene encodes a trypsinogen, which is a member of the trypsin family of serine proteases. This enzyme is expressed in the brain and pancreas and is resistant to common trypsin inhibitors. It is active on peptide linkages involving the carboxyl group of lysine or arginine. This gene is localized to the locus of T cell

Nanjing BYabscience technology Co.,Ltd



receptor beta variable orphans on chromosome 9. Four transcript variants encoding different isoforms have been described for this gene. [provided by RefSeq, Oct 2010],

**matters needing attention**

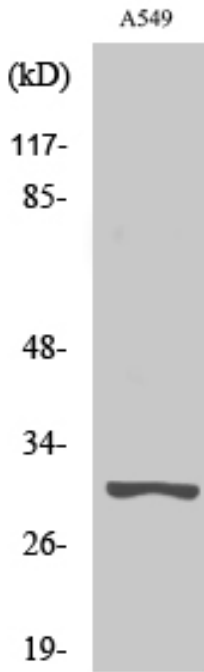
Avoid repeated freezing and thawing!

**Usage suggestions**

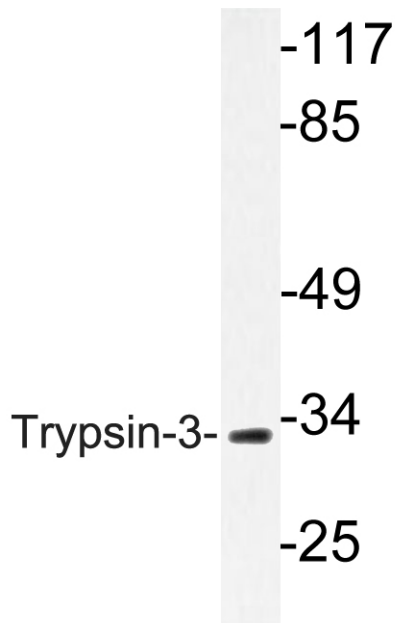
This product can be used in immunological reaction related experiments. For more information, please consult technical personnel.



## Products Images



Western Blot analysis of various cells using Trypsin-3 Polyclonal Antibody. Secondary antibody(catalog#:RS0002) was diluted at 1:20000



Western blot analysis of lysate from A549 cells, using Trypsin-3 antibody.