



TRIP13 Polyclonal Antibody

Catalog No	BYab-04257
Isotype	IgG
Reactivity	Human;Mouse;Rat
Applications	WB;IHC;IF;ELISA
Gene Name	TRIP13
Protein Name	Pachytene checkpoint protein 2 homolog
Immunogen	The antiserum was produced against synthesized peptide derived from human TRIP13. AA range:383-432
Specificity	TRIP13 Polyclonal Antibody detects endogenous levels of TRIP13 protein.
Formulation	Liquid in PBS containing 50% glycerol, 0.5% BSA and 0.02% sodium azide.
Source	Polyclonal, Rabbit,IgG
Purification	The antibody was affinity-purified from rabbit antiserum by affinity-chromatography using epitope-specific immunogen.
Dilution	WB: 1/500 - 1/2000. ELISA: 1/10000.. IF 1:50-200
Concentration	1 mg/ml
Purity	≥90%
Storage Stability	-20°C/1 year
Synonyms	TRIP13; PCH2; Pachytene checkpoint protein 2 homolog; Human papillomavirus type 16 E1 protein-binding protein; 16E1-BP; HPV16 E1 protein-binding protein; Thyroid hormone receptor interactor 13; Thyroid receptor-interacting protein 13; TR-in
Observed Band	48kD
Cell Pathway	male germ cell nucleus,nucleus,
Tissue Specificity	Lung,
Function	similarity:Belongs to the AAA ATPase family.,subunit:Specifically interacts with the ligand binding domain of the thyroid receptor (TR). This interaction does not require the presence of thyroid hormone for its interaction. Interacts with HPV16 E1.,
Background	This gene encodes a protein that interacts with thyroid hormone receptors, also known as hormone-dependent transcription factors. The gene product interacts specifically with the ligand binding domain. This gene is one of several that may

Nanjing BYabscience technology Co.,Ltd



play a role in early-stage non-small cell lung cancer. [provided by RefSeq, Oct 2009],

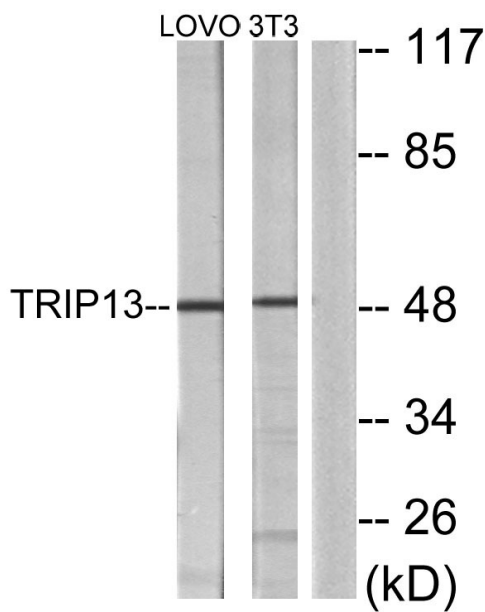
matters needing attention

Avoid repeated freezing and thawing!

Usage suggestions

This product can be used in immunological reaction related experiments. For more information, please consult technical personnel.

Products Images



Western blot analysis of lysates from LOVO and NIH/3T3 cells, using TRIP13 Antibody. The lane on the right is blocked with the synthesized peptide.