



TRAF6 Polyclonal Antibody

Catalog No	BYab-04253
Isotype	IgG
Reactivity	Human;Mouse;Rat
Applications	WB;IHC;IF;ELISA
Gene Name	TRAF6
Protein Name	TNF receptor-associated factor 6
Immunogen	The antiserum was produced against synthesized peptide derived from human TRAF6. AA range:105-154
Specificity	TRAF6 Polyclonal Antibody detects endogenous levels of TRAF6 protein.
Formulation	Liquid in PBS containing 50% glycerol, 0.5% BSA and 0.02% sodium azide.
Source	Polyclonal, Rabbit,IgG
Purification	The antibody was affinity-purified from rabbit antiserum by affinity-chromatography using epitope-specific immunogen.
Dilution	WB: 1/500 - 1/2000. IHC: 1/100 - 1/300. ELISA: 1/40000.. IF 1:50-200
Concentration	1 mg/ml
Purity	≥90%
Storage Stability	-20°C/1 year
Synonyms	TRAF6; RNF85; TNF receptor-associated factor 6; E3 ubiquitin-protein ligase TRAF6; Interleukin-1 signal transducer; RING finger protein 85
Observed Band	60kD
Cell Pathway	Cytoplasm . Cytoplasm, cell cortex . Nucleus . Lipid droplet . Found in the nuclei of some aggressive B-cell lymphoma cell lines as well as in the nuclei of both resting and activated T- and B-lymphocytes. Found in punctate nuclear body protein complexes. Ubiquitination may occur in the cytoplasm and sumoylation in the nucleus. RSAD2/viperin recruits it to the lipid droplet (By similarity). .
Tissue Specificity	Expressed in heart, brain, placenta, lung, liver, skeletal muscle, kidney and pancreas.
Function	domain:The coiled coil domain mediates homo- and hetero-oligomerization.,domain:The MATH/TRAF domain binds to receptor cytoplasmic domains.,function:Adapter protein and signal transducer that links members of the tumor necrosis factor receptor family to different signaling pathways by association with the receptor cytoplasmic domain and kinases. Also involved in the IL-1 signaling pathway via MYD88 and IRAK kinases. Seems to be involved in IL-17 signaling (By similarity). Mediates activation of NF-kappa-B and

Nanjing BYabscience technology Co.,Ltd



JNK. May function as an E3 ubiquitin ligase., pathway: Protein modification; protein ubiquitination., PTM: Polyubiquitinated., similarity: Contains 1 MATH domain., similarity: Contains 1 RING-type zinc finger., similarity: Contains 2 TRAF-type zinc fingers., subunit: Homotrimer (Probable). Binds to TNFRSF5/CD40 and TNFRSF11A/RANK. Associates with NGFR, TNFRSF17, IRAK1, IRAK2, IRAK3, IRAK4, RIPK

Background

TNF receptor associated factor 6 (TRAF6) Homo sapiens The protein encoded by this gene is a member of the TNF receptor associated factor (TRAF) protein family. TRAF proteins are associated with, and mediate signal transduction from, members of the TNF receptor superfamily. This protein mediates signaling from members of the TNF receptor superfamily as well as the Toll/IL-1 family. Signals from receptors such as CD40, TNFSF11/RANCE and IL-1 have been shown to be mediated by this protein. This protein also interacts with various protein kinases including IRAK1/IRAK, SRC and PKCzeta, which provides a link between distinct signaling pathways. This protein functions as a signal transducer in the NF-kappaB pathway that activates I kappa B kinase (IKK) in response to proinflammatory cytokines. The interaction of this protein with UBE2N/UBC13, and UBE2V1/UEV1A, which are ubiquitin conjugating enzymes catalyzing the formation of polyubiquitin chains, has

matters needing attention

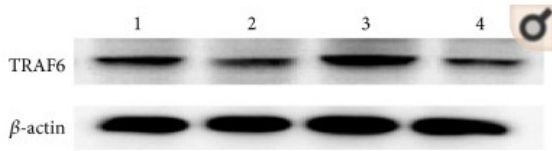
Avoid repeated freezing and thawing!

Usage suggestions

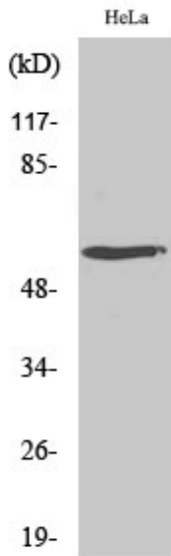
This product can be used in immunological reaction related experiments. For more information, please consult technical personnel.



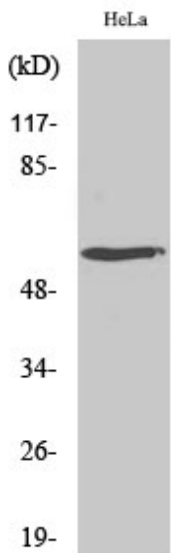
Products Images



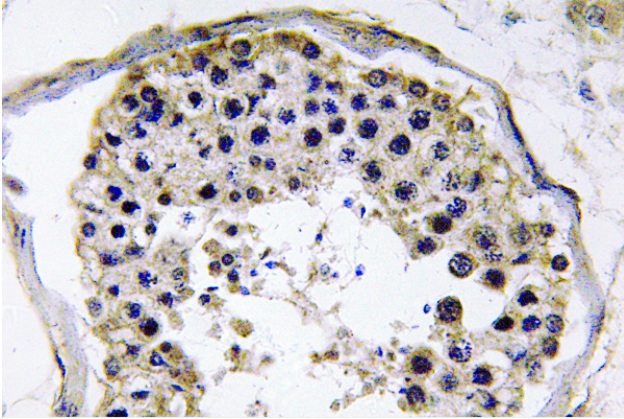
Yan, Jinchuan, et al. "CD137 regulates NFATc1 expression in mouse VSMCs through TRAF6/NF- κ B p65 signaling pathway." *Mediators of inflammation* 2015 (2015).



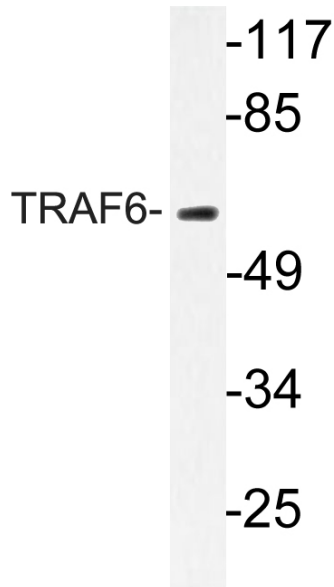
Western Blot analysis of various cells using TRAF6 Polyclonal Antibody diluted at 1:1000. Secondary antibody(catalog#:RS0002) was diluted at 1:20000



Western Blot analysis of Hela cells using TRAF6 Polyclonal Antibody diluted at 1:1000. Secondary antibody(catalog#:RS0002) was diluted at 1:20000



Immunohistochemistry analysis of TRAF6 antibody in paraffin-embedded human testis tissue.



Western blot analysis of lysate from HeLa cells, using TRAF6 antibody.