



Tollip Polyclonal Antibody

Catalog No	BYab-04248
Isotype	IgG
Reactivity	Human;Rat;Mouse;
Applications	WB;IHC;IF;ELISA
Gene Name	TOLLIP
Protein Name	Toll-interacting protein
Immunogen	Synthesized peptide derived from the Internal region of human Tollip.
Specificity	Tollip Polyclonal Antibody detects endogenous levels of Tollip protein.
Formulation	Liquid in PBS containing 50% glycerol, 0.5% BSA and 0.02% sodium azide.
Source	Polyclonal, Rabbit,IgG
Purification	The antibody was affinity-purified from rabbit antiserum by affinity-chromatography using epitope-specific immunogen.
Dilution	WB: 1/500 - 1/2000. IHC: 1/100 - 1/300. ELISA: 1/40000.. IF 1:50-200
Concentration	1 mg/ml
Purity	≥90%
Storage Stability	-20°C/1 year
Synonyms	TOLLIP; Toll-interacting protein
Observed Band	30kD
Cell Pathway	Cytoplasm .
Tissue Specificity	Brain,Eye,Placenta,Testis,
Function	function:Component of the signaling pathway of IL-1 and Toll-like receptors. Inhibits cell activation by microbial products. Recruits IRAK1 to the IL-1 receptor complex. Inhibits IRAK1 phosphorylation and kinase activity.,PTM:Phosphorylated by IRAK1 upon stimulation by IL-1 or microbial products.,similarity:Contains 1 CUE domain.,subunit:Oligomerizes. Binds to TLR2 and the TLR4-MD2 complex via its C-terminus. Exists as complex with IRAK1 in unstimulated cells. Upon IL-1 signaling, Tollip binds to the activated IL-1 receptor complex containing IL-1RI, IL-1RacP and the adapter protein MyD88, where it interacts with the TIR domain of IL-1RacP. MyD88 then triggers IRAK1 autophosphorylation, which in turn leads to the dissociation of IRAK1 from Tollip and IL-1RacP. Interacts with TOM1L2.,

Nanjing BYabscience technology Co.,Ltd



Background

This gene encodes a ubiquitin-binding protein that interacts with several Toll-like receptor (TLR) signaling cascade components. The encoded protein regulates inflammatory signaling and is involved in interleukin-1 receptor trafficking and in the turnover of IL1R-associated kinase. Several transcript variants encoding different isoforms have been found for this gene. [provided by RefSeq, Jan 2016],

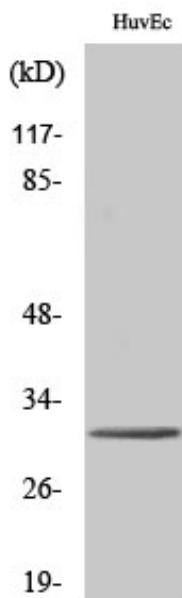
matters needing attention

Avoid repeated freezing and thawing!

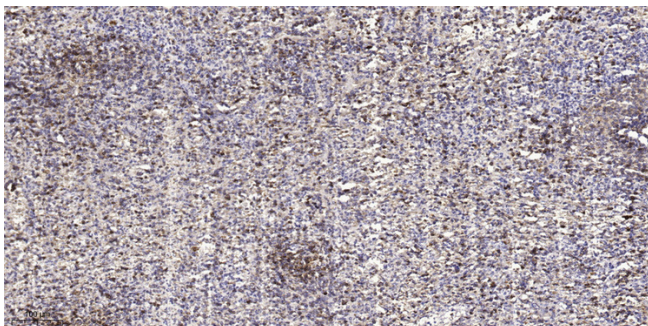
Usage suggestions

This product can be used in immunological reaction related experiments. For more information, please consult technical personnel.

Products Images



Western Blot analysis of various cells using Tollip Polyclonal Antibody. Secondary antibody(catalog#:RS0002) was diluted at 1:20000



Immunohistochemical analysis of paraffin-embedded human spleen tissue. 1,primary Antibody was diluted at 1:200(4° overnight). 2, Sodium citrate pH 6.0 was used for antigen retrieval(>98°C,20min). 3,Secondary antibody was diluted at 1:200

Nanjing BYabscience technology Co.,Ltd