



# TIGD3 Polyclonal Antibody

<b>Catalog No</b>	BYab-04243
<b>Isotype</b>	IgG
<b>Reactivity</b>	Human;Rat;Mouse;
<b>Applications</b>	WB;IHC;IF;ELISA
<b>Gene Name</b>	TIGD3
<b>Protein Name</b>	Tigger transposable element-derived protein 3
<b>Immunogen</b>	The antiserum was produced against synthesized peptide derived from human TIGD3. AA range:381-430
<b>Specificity</b>	TIGD3 Polyclonal Antibody detects endogenous levels of TIGD3 protein.
<b>Formulation</b>	Liquid in PBS containing 50% glycerol, 0.5% BSA and 0.02% sodium azide.
<b>Source</b>	Polyclonal, Rabbit,IgG
<b>Purification</b>	The antibody was affinity-purified from rabbit antiserum by affinity-chromatography using epitope-specific immunogen.
<b>Dilution</b>	WB: 1/500 - 1/2000. IHC: 1/100 - 1/300. ELISA: 1/40000.. IF 1:50-200
<b>Concentration</b>	1 mg/ml
<b>Purity</b>	≥90%
<b>Storage Stability</b>	-20°C/1 year
<b>Synonyms</b>	TIGD3; Tigger transposable element-derived protein 3
<b>Observed Band</b>	55kD
<b>Cell Pathway</b>	Nucleus .
<b>Tissue Specificity</b>	Lung,
<b>Function</b>	similarity:Belongs to the tigger transposable element derived protein family.,similarity:Contains 1 DDE domain.,similarity:Contains 1 HTH CENPB-type DNA-binding domain.,similarity:Contains 1 HTH psq-type DNA-binding domain.,
<b>Background</b>	The protein encoded by this gene belongs to the tigger subfamily of the pogo superfamily of DNA-mediated transposons in humans. These proteins are related to DNA transposons found in fungi and nematodes, and more distantly to the Tc1 and mariner transposases. They are also very similar to the major mammalian centromere protein B. The exact function of this gene is not known. [provided by RefSeq, Jul 2008],

Nanjing BYabscience technology Co.,Ltd



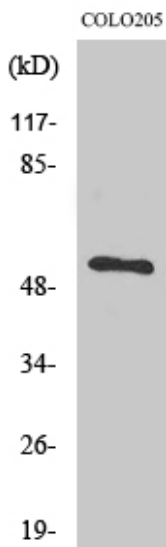
**matters needing attention**

Avoid repeated freezing and thawing!

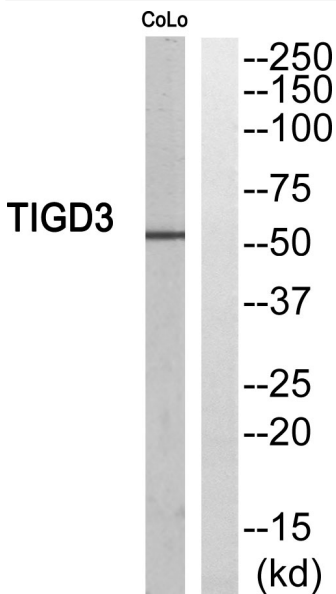
**Usage suggestions**

This product can be used in immunological reaction related experiments. For more information, please consult technical personnel.

## Products Images

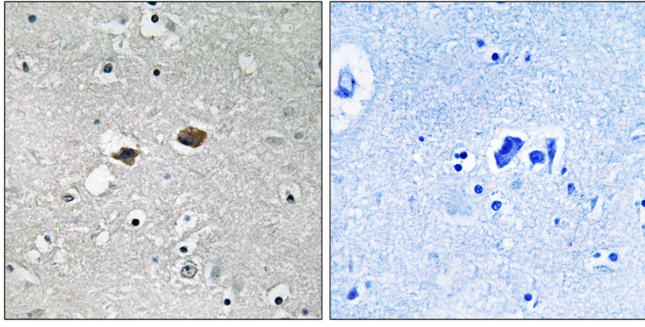


Western Blot analysis of various cells using TIGD3 Polyclonal Antibody. Secondary antibody(catalog#:RS0002) was diluted at 1:20000 cells nucleus extracted by Minute TM Cytoplasmic and Nuclear Fractionation kit (SC-003, Inventbiotech, MN, USA).



Western blot analysis of TIGD3 Antibody. The lane on the right is blocked with the TIGD3 peptide.

Nanjing BYabscience technology Co.,Ltd



Immunohistochemistry analysis of paraffin-embedded human brain, using TIGD3 Antibody. The lane on the right is blocked with the TIGD3 peptide.