



Tctex5 Polyclonal Antibody

Catalog No	BYab-04240
Isotype	IgG
Reactivity	Human;Mouse;Rat
Applications	IHC;IF;ELISA
Gene Name	PPP1R11
Protein Name	Protein phosphatase 1 regulatory subunit 11
Immunogen	The antiserum was produced against synthesized peptide derived from human PPP1R11. AA range:71-120
Specificity	Tctex5 Polyclonal Antibody detects endogenous levels of Tctex5 protein.
Formulation	Liquid in PBS containing 50% glycerol, 0.5% BSA and 0.02% sodium azide.
Source	Polyclonal, Rabbit,IgG
Purification	The antibody was affinity-purified from rabbit antiserum by affinity-chromatography using epitope-specific immunogen.
Dilution	IHC: 1/100 - 1/300. ELISA: 1/40000.. IF 1:50-200
Concentration	1 mg/ml
Purity	≥90%
Storage Stability	-20°C/1 year
Synonyms	PPP1R11; HCGV; TCTE5; Protein phosphatase 1 regulatory subunit 11; Hemochromatosis candidate gene V protein; HCG V; Protein phosphatase inhibitor 3
Observed Band	
Cell Pathway	protein phosphatase type 1 complex,nucleus,cytoplasm,
Tissue Specificity	Widely expressed.
Function	function:Inhibitor of protein phosphatase 1.,tissue specificity:Widely expressed.,
Background	This gene encodes a specific inhibitor of protein phosphatase-1 (PP1) with a differential sensitivity toward the metal-independent and metal-dependent forms of PP1. The gene is located within the major histocompatibility complex class I region on chromosome 6. [provided by RefSeq, Jul 2008],

Nanjing BYabscience technology Co.,Ltd



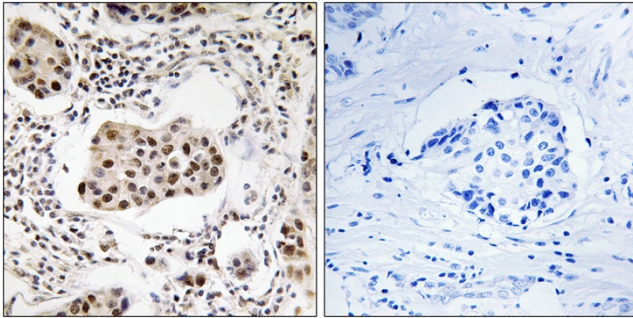
matters needing attention

Avoid repeated freezing and thawing!

Usage suggestions

This product can be used in immunological reaction related experiments. For more information, please consult technical personnel.

Products Images



Immunohistochemistry analysis of paraffin-embedded human breast carcinoma tissue, using PPP1R11 Antibody. The picture on the right is blocked with the synthesized peptide.