



TBC1D3A/B/C Polyclonal Antibody

Catalog No	BYab-04237
Isotype	IgG
Reactivity	Human;Rat;Mouse;
Applications	WB;IF;ELISA
Gene Name	TBC1D3
Protein Name	TBC1 domain family member 3
Immunogen	The antiserum was produced against synthesized peptide derived from human TBC1D3. AA range:481-530
Specificity	TBC1D3A/B/C Polyclonal Antibody detects endogenous levels of TBC1D3A/B/C protein.
Formulation	Liquid in PBS containing 50% glycerol, 0.5% BSA and 0.02% sodium azide.
Source	Polyclonal, Rabbit,IgG
Purification	The antibody was affinity-purified from rabbit antiserum by affinity-chromatography using epitope-specific immunogen.
Dilution	WB: 1/500 - 1/2000. ELISA: 1/20000.. IF 1:50-200
Concentration	1 mg/ml
Purity	≥90%
Storage Stability	-20°C/1 year
Synonyms	TBC1D3; PRC17; TBC1D3A; TBC1 domain family member 3; Prostate cancer gene 17 protein; Protein TRE17-alpha; Rab GTPase-activating protein PRC17; TBC1D3B; TBC1D3I; TBC1 domain family member 3B; TBC1D3C; TBC1D3D; TBC1 domain family member 3C
Observed Band	62kD
Cell Pathway	Cell membrane ; Lipid-anchor . Associated with lipid rafts.
Tissue Specificity	Expressed in liver, skeletal muscle, kidney, pancreas, spleen, testis, ovary, small intestine and peripheral blood leukocytes. Overexpressed in prostate cancers.
Function	disease:May be involved in forms of prostate cancers.,function:Acts as a GTPase activating protein for RAB5. Does not act on RAB4 or RAB11.,similarity:Contains 1 Rab-GAP TBC domain.,tissue specificity:Expressed in liver, skeletal muscle, kidney, pancreas, spleen, testis, ovary, small intestine and peripheral blood leukocytes. Overexpressed in prostate cancers.,tissue specificity:Expressed in pancreas, thymus and testis.,

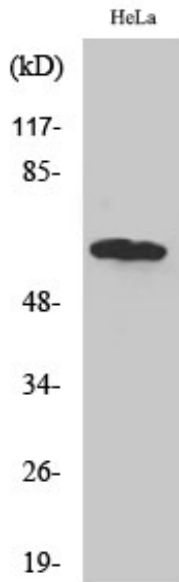
Nanjing BYabscience technology Co.,Ltd



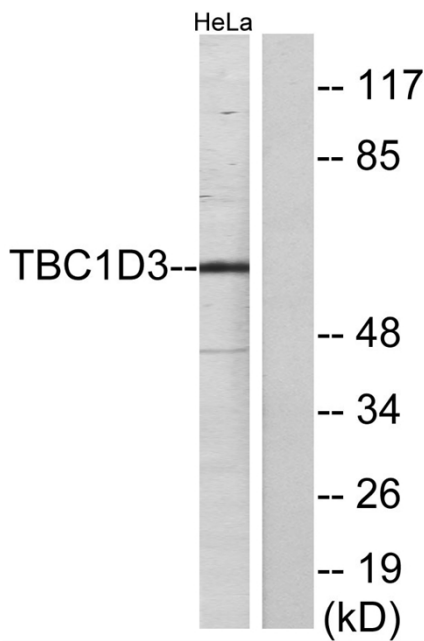
Background	This gene represents one of a cluster of related genes found on chromosome 17. The proteins encoded by this gene family contain a TBC (Tre-2, Bub2p, and Cdc16p) domain and may be involved in GTPase signaling and vesicle trafficking. [provided by RefSeq, Apr 2014],
matters needing attention	Avoid repeated freezing and thawing!
Usage suggestions	This product can be used in immunological reaction related experiments. For more information, please consult technical personnel.



Products Images



Western Blot analysis of various cells using TBC1D3A/B/C Polyclonal Antibody



Western blot analysis of lysates from HeLa cells, using TBC1D3 Antibody. The lane on the right is blocked with the synthesized peptide.