



Stathmin-3 Polyclonal Antibody

Catalog No	BYab-04226
Isotype	IgG
Reactivity	Human;Mouse;Rat
Applications	WB;ELISA;IHC
Gene Name	STMN3
Protein Name	Stathmin-3
Immunogen	The antiserum was produced against synthesized peptide derived from human STMN3. AA range:61-110
Specificity	Stathmin-3 Polyclonal Antibody detects endogenous levels of Stathmin-3 protein.
Formulation	Liquid in PBS containing 50% glycerol, 0.5% BSA and 0.02% sodium azide.
Source	Polyclonal, Rabbit,IgG
Purification	The antibody was affinity-purified from rabbit antiserum by affinity-chromatography using epitope-specific immunogen.
Dilution	WB 1:500-2000;IHC-p 1:50-300; ELISA 2000-20000
Concentration	1 mg/ml
Purity	≥90%
Storage Stability	-20°C/1 year
Synonyms	STMN3; SCLIP; Stathmin-3; SCG10-like protein
Observed Band	22kD
Cell Pathway	Golgi apparatus . Cell projection, growth cone . Cell projection, axon . Cytoplasm, cytosol .
Tissue Specificity	Neuron specific.
Function	similarity:Belongs to the stathmin family.,tissue specificity:Neuron specific.,
Background	This gene encodes a protein which is a member of the stathmin protein family. Members of this protein family form a complex with tubulins at a ratio of 2 tubulins for each stathmin protein. Microtubules require the ordered assembly of alpha- and beta-tubulins, and formation of a complex with stathmin disrupts microtubule formation and function. A pseudogene of this gene is located on chromosome 22. Alternative splicing results in multiple transcript variants. [provided by RefSeq, Jan 2013],

Nanjing BYabscience technology Co.,Ltd



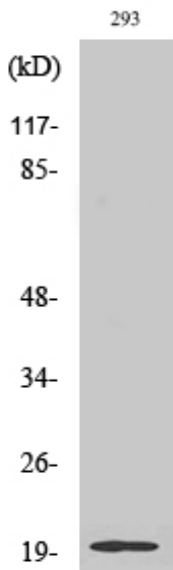
matters needing attention

Avoid repeated freezing and thawing!

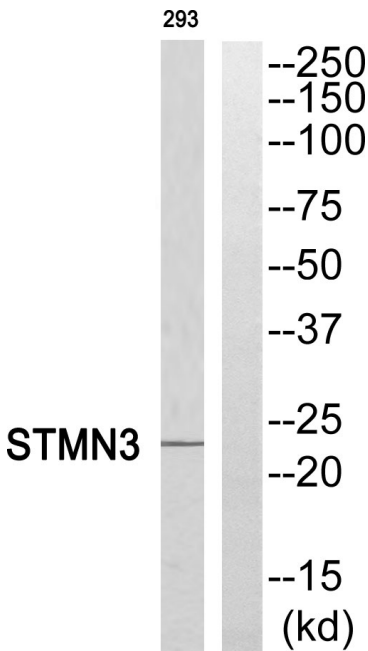
Usage suggestions

This product can be used in immunological reaction related experiments. For more information, please consult technical personnel.

Products Images

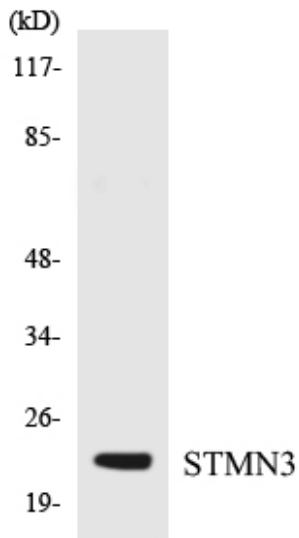


Western Blot analysis of various cells using Stathmin-3 Polyclonal Antibody

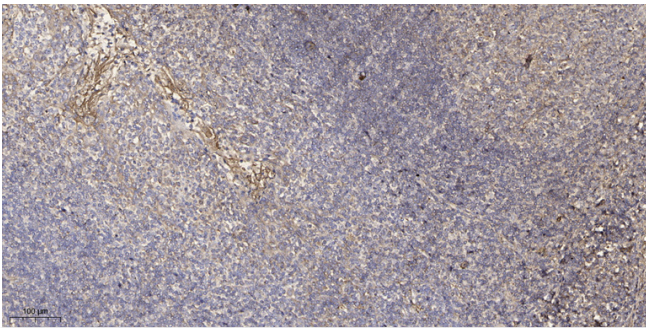


Western blot analysis of STMN3 Antibody. The lane on the right is blocked with the STMN3 peptide.

Nanjing BYabscience technology Co.,Ltd



Western blot analysis of the lysates from K562 cells using STMN3 antibody.



Immunohistochemical analysis of paraffin-embedded human tonsil. 1, Antibody was diluted at 1:200(4° overnight). 2, Tris-EDTA,pH9.0 was used for antigen retrieval. 3,Secondary antibody was diluted at 1:200(room temperature, 45min).