



# STAC2 Polyclonal Antibody

<b>Catalog No</b>	BYab-04223
<b>Isotype</b>	IgG
<b>Reactivity</b>	Human;Mouse;Rat
<b>Applications</b>	WB;ELISA
<b>Gene Name</b>	STAC2
<b>Protein Name</b>	SH3 and cysteine-rich domain-containing protein 2
<b>Immunogen</b>	The antiserum was produced against synthesized peptide derived from human STAC2. AA range:211-260
<b>Specificity</b>	STAC2 Polyclonal Antibody detects endogenous levels of STAC2 protein.
<b>Formulation</b>	Liquid in PBS containing 50% glycerol, 0.5% BSA and 0.02% sodium azide.
<b>Source</b>	Polyclonal, Rabbit,IgG
<b>Purification</b>	The antibody was affinity-purified from rabbit antiserum by affinity-chromatography using epitope-specific immunogen.
<b>Dilution</b>	Western Blot: 1/500 - 1/2000. ELISA: 1/20000. Not yet tested in other applications.
<b>Concentration</b>	1 mg/ml
<b>Purity</b>	≥90%
<b>Storage Stability</b>	-20°C/1 year
<b>Synonyms</b>	STAC2; SH3 and cysteine-rich domain-containing protein 2; 24b2/STAC2; Src homology 3 and cysteine-rich domain-containing protein 2
<b>Observed Band</b>	40kD
<b>Cell Pathway</b>	Cytoplasm, cytosol . Cell membrane ; Peripheral membrane protein ; Cytoplasmic side . Cell membrane, sarcolemma ; Peripheral membrane protein ; Cytoplasmic side . Colocalizes with CACNA1C at the plasma membrane of transfected cells. .
<b>Tissue Specificity</b>	Brain,Uterus,
<b>Function</b>	similarity:Contains 1 phorbol-ester/DAG-type zinc finger.,similarity:Contains 1 SH3 domain.,
<b>Background</b>	similarity:Contains 1 phorbol-ester/DAG-type zinc finger.,similarity:Contains 1 SH3 domain.,
<b>matters needing attention</b>	Avoid repeated freezing and thawing!

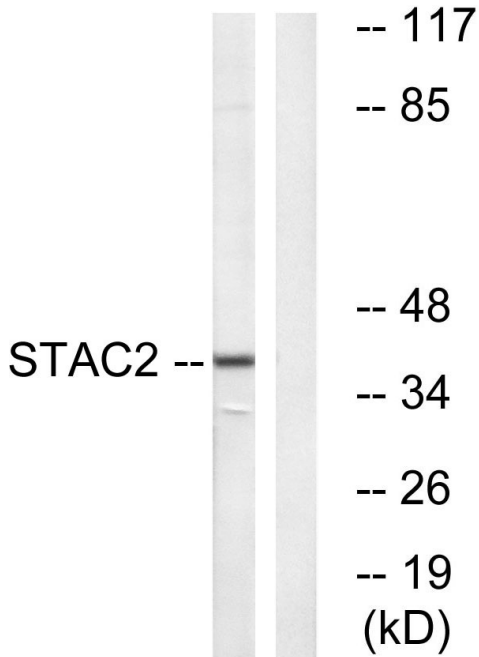
**Nanjing BYabscience technology Co.,Ltd**



**Usage suggestions**

This product can be used in immunological reaction related experiments. For more information, please consult technical personnel.

**Products Images**



Western blot analysis of lysates from K562 cells, using STAC2 Antibody. The lane on the right is blocked with the synthesized peptide.