



SSB Polyclonal Antibody

Catalog No	BYab-04222
Isotype	IgG
Reactivity	Human;Rat;Mouse;
Applications	WB;IHC;IF;ELISA
Gene Name	SSB
Protein Name	Lupus La protein
Immunogen	The antiserum was produced against synthesized peptide derived from human SSB. AA range:341-390
Specificity	SSB Polyclonal Antibody detects endogenous levels of SSB protein.
Formulation	Liquid in PBS containing 50% glycerol, 0.5% BSA and 0.02% sodium azide.
Source	Polyclonal, Rabbit,IgG
Purification	The antibody was affinity-purified from rabbit antiserum by affinity-chromatography using epitope-specific immunogen.
Dilution	WB: 1/500 - 1/2000. IHC: 1/100 - 1/300. ELISA: 1/40000.. IF 1:50-200
Concentration	1 mg/ml
Purity	≥90%
Storage Stability	-20°C/1 year
Synonyms	SSB; Lupus La protein; La autoantigen; La ribonucleoprotein; Sjogren syndrome type B antigen; SS-B
Observed Band	47kD
Cell Pathway	Nucleus .
Tissue Specificity	Epithelium,Liver,Placenta,Skeletal muscle,
Function	disease:Sera from patients with systemic lupus erythematosus (SLE) often contain antibodies that react with the normal cellular La protein as if this antigen was foreign.,function:La protein plays a role in the transcription of RNA polymerase III. It is most probably a transcription termination factor. Binds to the 3' termini of virtually all nascent polymerase III transcripts. It is associated with precursor forms of RNA polymerase III transcripts including tRNA and 4.5S, 5S, 7S, and 7-2 RNAs.,PTM:Phosphorylated. The phosphorylation sites are at the C-terminal part of the protein.,PTM:The N-terminus is blocked.,similarity:Contains 1 HTH La-type RNA-binding domain.,similarity:Contains 1 RRM (RNA recognition motif) domain.,subunit:Interacts with DDX15. May interact with RUFY1.,

Nanjing BYabscience technology Co.,Ltd



Background

Sjogren syndrome antigen B(SSB) Homo sapiens The protein encoded by this gene is involved in diverse aspects of RNA metabolism, including binding and protecting poly(U) termini of nascent RNA polymerase III transcripts from exonuclease digestion, processing 5' and 3' ends of pre-tRNA precursors, acting as an RNA chaperone, and binding viral RNAs associated with hepatitis C virus. Autoantibodies reacting with this protein are found in the sera of patients with Sjogren syndrome and systemic lupus erythematosus. Alternative promoter usage results in two different transcript variants which encode the same protein. [provided by RefSeq, Jun 2014],

matters needing attention

Avoid repeated freezing and thawing!

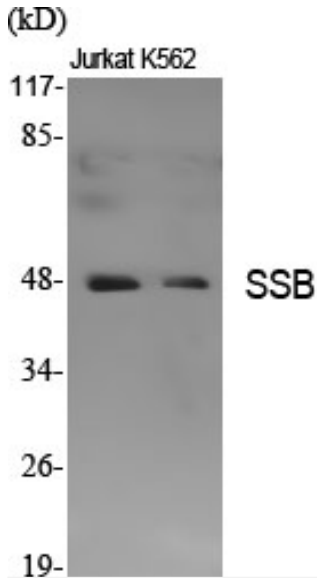
Usage suggestions

This product can be used in immunological reaction related experiments. For more information, please consult technical personnel.

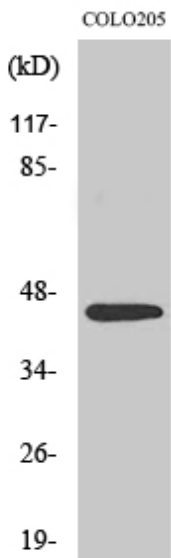
Nanjing BYabscience technology Co.,Ltd



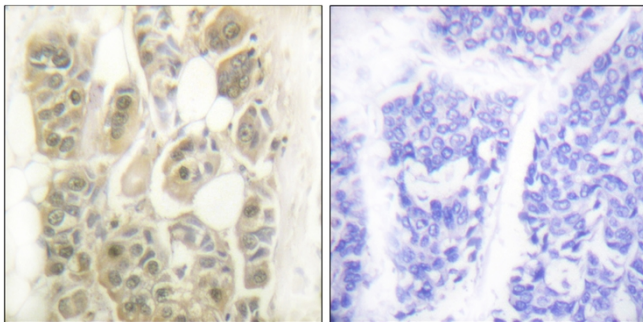
Products Images



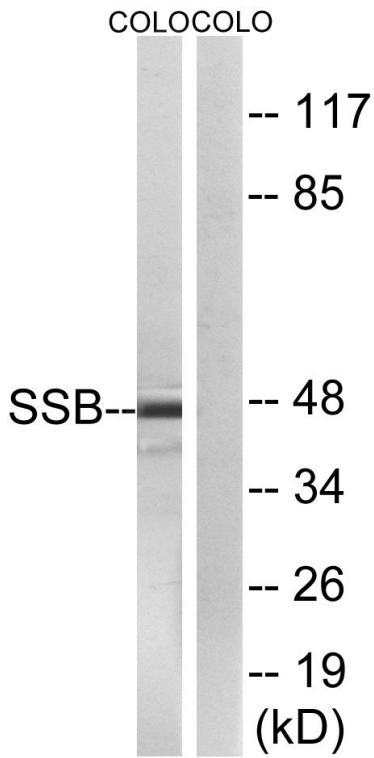
Western Blot analysis of various cells using SSB Polyclonal Antibody



Western Blot analysis of COLO205 cells using SSB Polyclonal Antibody



Immunohistochemistry analysis of paraffin-embedded human breast carcinoma tissue, using SSB Antibody. The picture on the right is blocked with the synthesized peptide.



Western blot analysis of lysates from COLO cells, using SSB Antibody. The lane on the right is blocked with the synthesized peptide.