



# SLC10A7 Polyclonal Antibody

<b>Catalog No</b>	BYab-04216
<b>Isotype</b>	IgG
<b>Reactivity</b>	Human;Mouse;Rat
<b>Applications</b>	WB;ELISA;IHC
<b>Gene Name</b>	SLC10A7
<b>Protein Name</b>	Sodium/bile acid cotransporter 7
<b>Immunogen</b>	The antiserum was produced against synthesized peptide derived from human SLC10A7. AA range:168-217
<b>Specificity</b>	SLC10A7 Polyclonal Antibody detects endogenous levels of SLC10A7 protein.
<b>Formulation</b>	Liquid in PBS containing 50% glycerol, 0.5% BSA and 0.02% sodium azide.
<b>Source</b>	Polyclonal, Rabbit,IgG
<b>Purification</b>	The antibody was affinity-purified from rabbit antiserum by affinity-chromatography using epitope-specific immunogen.
<b>Dilution</b>	WB 1:500-2000;IHC-p 1:50-300; ELISA 2000-20000
<b>Concentration</b>	1 mg/ml
<b>Purity</b>	≥90%
<b>Storage Stability</b>	-20°C/1 year
<b>Synonyms</b>	SLC10A7; C4orf13; P7; PSEC0051; Sodium/bile acid cotransporter 7; Na(+)/bile acid cotransporter 7; Solute carrier family 10 member 7
<b>Observed Band</b>	39kD
<b>Cell Pathway</b>	Cell membrane ; Multi-pass membrane protein . Endoplasmic reticulum membrane ; Multi-pass membrane protein . Golgi apparatus membrane .
<b>Tissue Specificity</b>	Widely expressed (PubMed:15932064, PubMed:17628207). Expressed at high levels in liver and at lower levels in prostate, placenta, kidney, heart, lung, thymus and spleen (PubMed:15932064, PubMed:17628207). Strongly expressed in testis and also detected in brain, ovary, colon and small intestine (PubMed:17628207). Weakly expressed in testis and not detected in brain, ovary, colon or small intestine (PubMed:15932064). Isoform 1: Expressed in liver, testis and placenta (PubMed:17628207). Isoform 4: Expressed in liver, testis and placenta (PubMed:17628207).
<b>Function</b>	similarity:Belongs to the sodium:bile acid symporter family.,

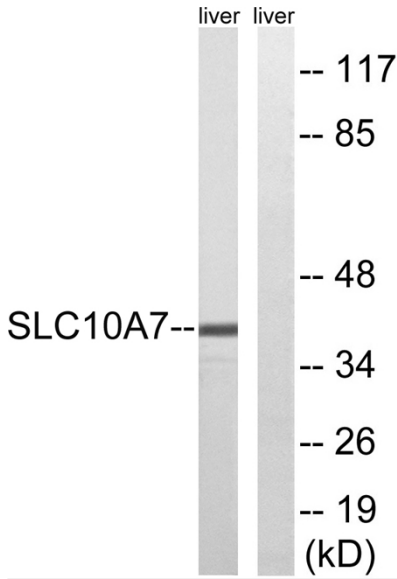
Nanjing BYabscience technology Co.,Ltd



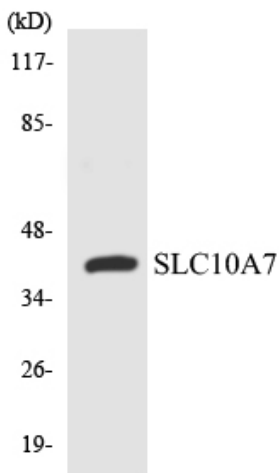
<b>Background</b>	similarity:Belongs to the sodium:bile acid symporter family.,
<b>matters needing attention</b>	Avoid repeated freezing and thawing!
<b>Usage suggestions</b>	This product can be used in immunological reaction related experiments. For more information, please consult technical personnel.



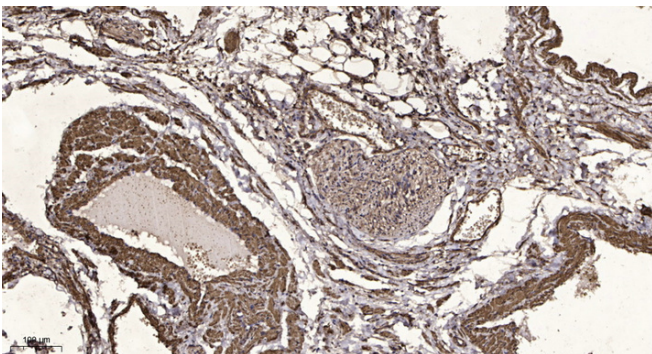
## Products Images



Western blot analysis of lysates from mouse liver, using SLC10A7 Antibody. The lane on the right is blocked with the synthesized peptide.



Western blot analysis of the lysates from 293 cells using SLC10A7 antibody.



Immunohistochemical analysis of paraffin-embedded human oophoroma. 1, Antibody was diluted at 1:200(4° overnight). 2, Tris-EDTA,pH9.0 was used for antigen retrieval. 3,Secondary antibody was diluted at 1:200(room temperature, 45min).