



# SLC10A4 Polyclonal Antibody

<b>Catalog No</b>	BYab-04215
<b>Isotype</b>	IgG
<b>Reactivity</b>	Human;Rat;Mouse;
<b>Applications</b>	IHC;IF;ELISA
<b>Gene Name</b>	SLC10A4
<b>Protein Name</b>	Sodium/bile acid cotransporter 4
<b>Immunogen</b>	Synthesized peptide derived from SLC10A4 . at AA range: 340-420
<b>Specificity</b>	SLC10A4 Polyclonal Antibody detects endogenous levels of SLC10A4 protein.
<b>Formulation</b>	Liquid in PBS containing 50% glycerol, 0.5% BSA and 0.02% sodium azide.
<b>Source</b>	Polyclonal, Rabbit,IgG
<b>Purification</b>	The antibody was affinity-purified from rabbit antiserum by affinity-chromatography using epitope-specific immunogen.
<b>Dilution</b>	IHC: 1/100 - 1/300. ELISA: 1/10000.. IF 1:50-200
<b>Concentration</b>	1 mg/ml
<b>Purity</b>	≥90%
<b>Storage Stability</b>	-20°C/1 year
<b>Synonyms</b>	SLC10A4; Sodium/bile acid cotransporter 4; Na(+)/bile acid cotransporter 4; Solute carrier family 10 member 4
<b>Observed Band</b>	
<b>Cell Pathway</b>	Cell membrane ; Multi-pass membrane protein .
<b>Tissue Specificity</b>	Highly expressed in brain and small intestine, and moderately expressed in colon, heart, prostate, and testis. Very low levels were detected in kidney, liver, ovary, placenta, spleen, and thymus.
<b>Function</b>	similarity:Belongs to the sodium:bile acid symporter family.,
<b>Background</b>	similarity:Belongs to the sodium:bile acid symporter family.,
<b>matters needing attention</b>	Avoid repeated freezing and thawing!

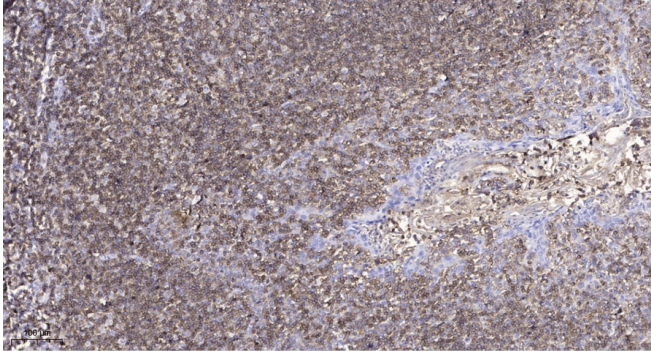
Nanjing BYabscience technology Co.,Ltd



### Usage suggestions

This product can be used in immunological reaction related experiments. For more information, please consult technical personnel.

## Products Images



Immunohistochemical analysis of paraffin-embedded human tonsil. 1, Antibody was diluted at 1:200(4° overnight). 2, Tris-EDTA,pH9.0 was used for antigen retrieval. 3,Secondary antibody was diluted at 1:200(room temperature, 45min).