



SH3BGR Polyclonal Antibody

Catalog No	BYab-04206
Isotype	IgG
Reactivity	Human;Mouse;Rat
Applications	WB;IHC
Gene Name	SH3BGR
Protein Name	SH3 domain-binding glutamic acid-rich protein
Immunogen	The antiserum was produced against synthesized peptide derived from human SH3BGR. AA range:81-130
Specificity	SH3BGR Polyclonal Antibody detects endogenous levels of SH3BGR protein.
Formulation	Liquid in PBS containing 50% glycerol, 0.5% BSA and 0.02% sodium azide.
Source	Polyclonal, Rabbit,IgG
Purification	The antibody was affinity-purified from rabbit antiserum by affinity-chromatography using epitope-specific immunogen.
Dilution	WB 1:500-2000;IHC-p 1:50-300
Concentration	1 mg/ml
Purity	≥90%
Storage Stability	-20°C/1 year
Synonyms	SH3BGR; SH3 domain-binding glutamic acid-rich protein; SH3BGR protein; 21-glutamic acid-rich protein; 21-GARP
Observed Band	26kD
Cell Pathway	cytosol,
Tissue Specificity	Expressed in heart and skeletal muscle.
Function	caution:It is uncertain whether Met-1 or Met-64 is the initiator.,similarity:Belongs to the SH3BGR family.,tissue specificity:Expressed in heart and skeletal muscle.,
Background	caution:It is uncertain whether Met-1 or Met-64 is the initiator.,similarity:Belongs to the SH3BGR family.,tissue specificity:Expressed in heart and skeletal muscle.,
matters needing attention	Avoid repeated freezing and thawing!

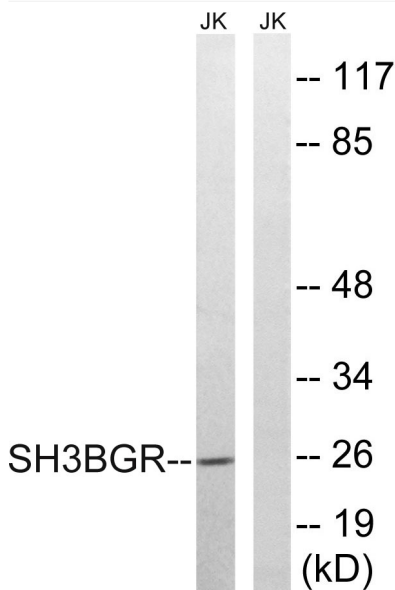
Nanjing BYabscience technology Co.,Ltd



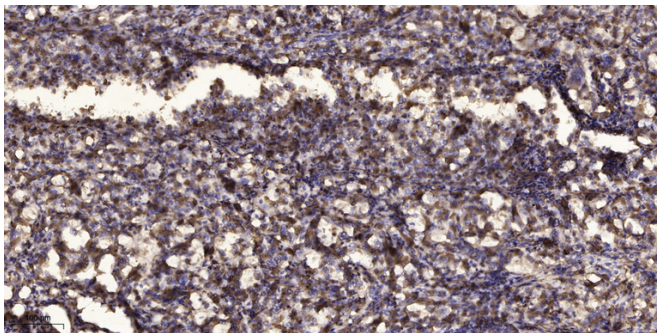
Usage suggestions

This product can be used in immunological reaction related experiments. For more information, please consult technical personnel.

Products Images



Western blot analysis of lysates from Jurkat cells, using SH3BGR Antibody. The lane on the right is blocked with the synthesized peptide.



Immunohistochemical analysis of paraffin-embedded human Squamous cell carcinoma of lung. 1, Antibody was diluted at 1:200(4° overnight). 2, Tris-EDTA,pH9.0 was used for antigen retrieval. 3,Secondary antibody was diluted at 1:200(room temperature, 45min).