



SerpinA6 Polyclonal Antibody

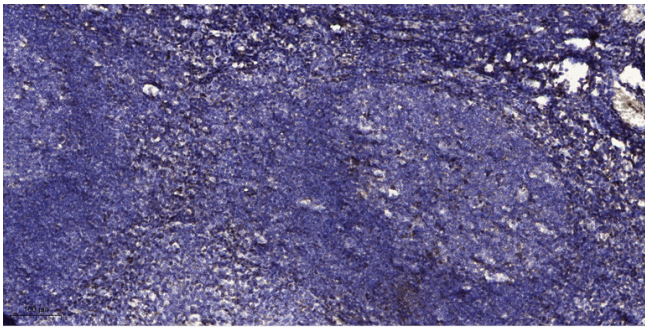
Catalog No	BYab-04205
Isotype	IgG
Reactivity	Human;Rat;Mouse;
Applications	IHC;IF;ELISA
Gene Name	SERPINA6
Protein Name	Corticosteroid-binding globulin
Immunogen	Synthesized peptide derived from the Internal region of human SerpinA6.
Specificity	SerpinA6 Polyclonal Antibody detects endogenous levels of SerpinA6 protein.
Formulation	Liquid in PBS containing 50% glycerol, 0.5% BSA and 0.02% sodium azide.
Source	Polyclonal, Rabbit,IgG
Purification	The antibody was affinity-purified from rabbit antiserum by affinity-chromatography using epitope-specific immunogen.
Dilution	IHC: 1/100 - 1/300. ELISA: 1/5000.. IF 1:50-200
Concentration	1 mg/ml
Purity	≥90%
Storage Stability	-20°C/1 year
Synonyms	SERPINA6; CBG; Corticosteroid-binding globulin; CBG; Serpin A6; Transcortin
Observed Band	
Cell Pathway	Secreted.
Tissue Specificity	Plasma; synthesized in liver. Has also been identified in a number of glucocorticoid responsive cells.
Function	disease:Defects in SERPINA6 are a cause of corticosteroid-binding globulin deficiency (CBG deficiency) [MIM:611489]. CBG deficiency is an extremely rare hereditary disorder characterized by reduced corticosteroid-binding capacity with normal or low plasma corticosteroid-binding globulin concentration, and normal or low basal cortisol levels associated with hypo/hypertension and muscle fatigue..function:Major transport protein for glucocorticoids and progestins in the blood of almost all vertebrate species..online information:Transcortin entry,PTM:Glycosylation in position Asn-260 is needed for steroid binding.,PTM:N-glycosylated; binds 5 oligosaccharide chains.,similarity:Belongs to the serpin family.,tissue specificity:Plasma; synthesized in liver. Has also been identified in a number of glucocorticoid responsive cells.,

Nanjing BYabscience technology Co.,Ltd



Background	This gene encodes an alpha-globulin protein with corticosteroid-binding properties. This is the major transport protein for glucocorticoids and progestins in the blood of most vertebrates. The gene localizes to a chromosomal region containing several closely related serine protease inhibitors which may have evolved by duplication events. [provided by RefSeq, Jul 2008],
matters needing attention	Avoid repeated freezing and thawing!
Usage suggestions	This product can be used in immunological reaction related experiments. For more information, please consult technical personnel.

Products Images



Immunohistochemical analysis of paraffin-embedded human tonsil. 1, Antibody was diluted at 1:200(4° overnight). 2, Tris-EDTA,pH9.0 was used for antigen retrieval. 3,Secondary antibody was diluted at 1:200(room temperature, 30min).