



SCCA2 Polyclonal Antibody

Catalog No	BYab-04186
Isotype	IgG
Reactivity	Human;Rat;Mouse;
Applications	WB;ELISA;IHC
Gene Name	SERPINB4
Protein Name	Serpin B4
Immunogen	The antiserum was produced against synthesized peptide derived from human SERPINB4. AA range:261-310
Specificity	SCCA2 Polyclonal Antibody detects endogenous levels of SCCA2 protein.
Formulation	Liquid in PBS containing 50% glycerol, 0.5% BSA and 0.02% sodium azide.
Source	Polyclonal, Rabbit,IgG
Purification	The antibody was affinity-purified from rabbit antiserum by affinity-chromatography using epitope-specific immunogen.
Dilution	WB 1:500-2000;IHC-p 1:50-300; ELISA 2000-20000
Concentration	1 mg/ml
Purity	≥90%
Storage Stability	-20°C/1 year
Synonyms	SERPINB4; PI11; SCCA2; Serpin B4; Leupin; Peptidase inhibitor 11; PI-11; Squamous cell carcinoma antigen 2; SCCA-2
Observed Band	45kD
Cell Pathway	Cytoplasm . Seems to also be secreted in plasma by cancerous cells but at a low level.
Tissue Specificity	Squamous cells.
Function	function:May act as a protease inhibitor to modulate the host immune response against tumor cells.,similarity:Belongs to the serpin family.,similarity:Belongs to the serpin family. Ov-serpin subfamily.,subcellular location:Seems to also be secreted in plasma by cancerous cells but at a low level.,tissue specificity:Squamous cells.,
Background	function:May act as a protease inhibitor to modulate the host immune response against tumor cells.,similarity:Belongs to the serpin family.,similarity:Belongs to the serpin family. Ov-serpin subfamily.,subcellular location:Seems to also be secreted in plasma by cancerous cells but at a low level.,tissue

Nanjing BYabscience technology Co.,Ltd



specificity:Squamous cells.,

matters needing attention

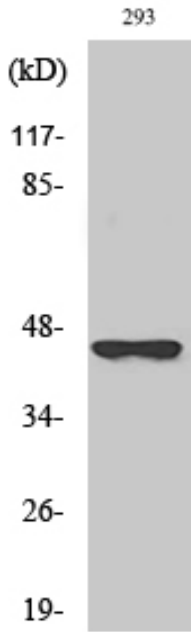
Avoid repeated freezing and thawing!

Usage suggestions

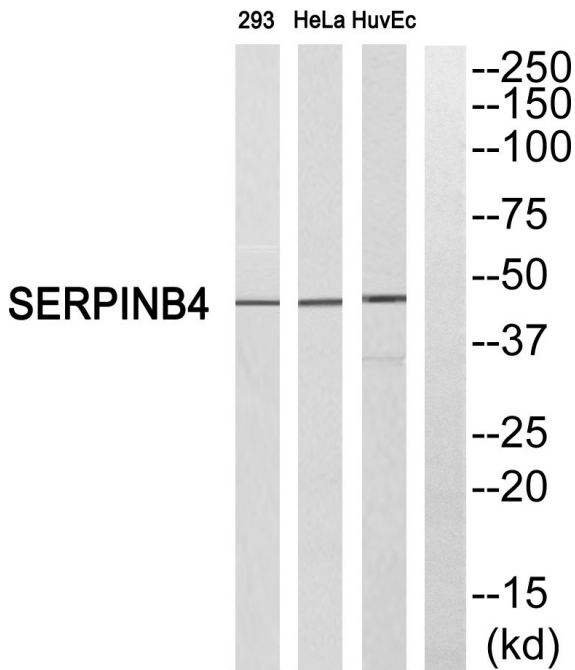
This product can be used in immunological reaction related experiments. For more information, please consult technical personnel.



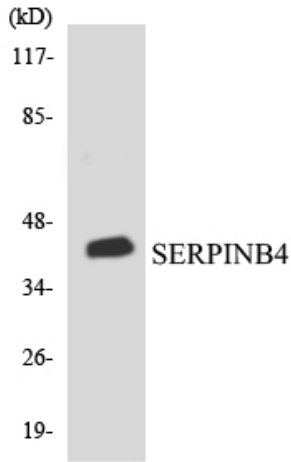
Products Images



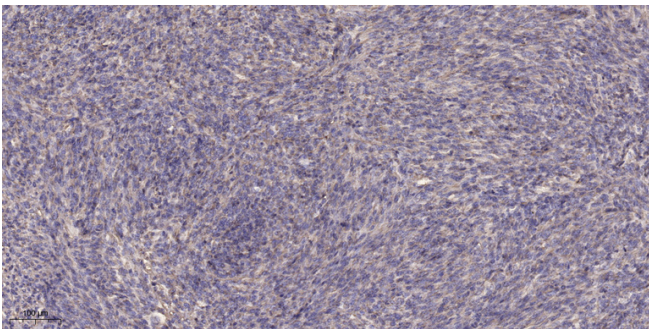
Western Blot analysis of various cells using SCCA2 Polyclonal Antibody



Western blot analysis of SERPINB4 Antibody. The lane on the right is blocked with the SERPINB4 peptide.



Western blot analysis of the lysates from COLO205 cells using SERPINB4 antibody.



Immunohistochemical analysis of paraffin-embedded human Colon cancer. 1, Antibody was diluted at 1:200(4° overnight). 2, Tris-EDTA,pH9.0 was used for antigen retrieval. 3,Secondary antibody was diluted at 1:200(room temperature, 45min).