



RTCD1 Polyclonal Antibody

Catalog No	BYab-04182
Isotype	IgG
Reactivity	Human;Rat;Mouse;
Applications	WB;IHC;IF;ELISA
Gene Name	RTCA
Protein Name	RNA 3'-terminal phosphate cyclase
Immunogen	The antiserum was produced against synthesized peptide derived from human RTCD1. AA range:317-366
Specificity	RTCD1 Polyclonal Antibody detects endogenous levels of RTCD1 protein.
Formulation	Liquid in PBS containing 50% glycerol, 0.5% BSA and 0.02% sodium azide.
Source	Polyclonal, Rabbit,IgG
Purification	The antibody was affinity-purified from rabbit antiserum by affinity-chromatography using epitope-specific immunogen.
Dilution	WB: 1/500 - 1/2000. IHC: 1/100 - 1/300. ELISA: 1/5000.. IF 1:50-200
Concentration	1 mg/ml
Purity	≥90%
Storage Stability	-20°C/1 year
Synonyms	RTCA; RPC; RPC1; RTC1; RTCD1; RNA 3'-terminal phosphate cyclase; RNA cyclase; RNA-3'-phosphate cyclase; RNA terminal phosphate cyclase domain-containing protein 1; RTC domain-containing protein 1
Observed Band	40kD
Cell Pathway	Nucleus, nucleoplasm .
Tissue Specificity	Ubiquitous.
Function	catalytic activity:ATP + RNA 3'-terminal-phosphate = AMP + diphosphate + RNA terminal-2',3'-cyclic-phosphate.,function:Catalyzes the conversion of 3'-phosphate to a 2',3'-cyclic phosphodiester at the end of RNA. The mechanism of action of the enzyme occurs in 3 steps: (A) adenylation of the enzyme by ATP; (B) the enzyme acts on RNA-N3'P to produce RNA-N3'PP5'A; (C) a non catalytic nucleophilic attack by the adjacent 2'hydroxyl on the phosphorus in the diester linkage to produce the cyclic end product. The biological role of this enzyme is unknown but it is likely to function in some aspects of cellular RNA processing.,similarity:Belongs to the RNA 3'-terminal cyclase family. Type 1

Nanjing BYabscience technology Co.,Ltd



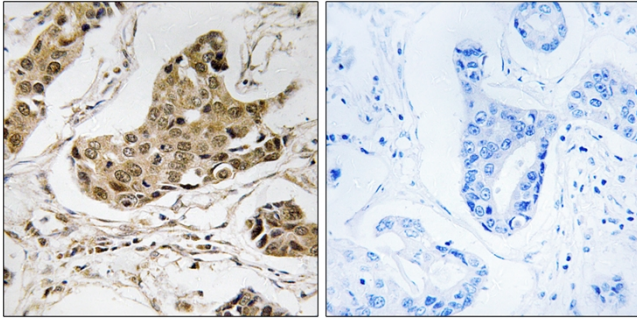
subfamily.,subunit:Monomer.,tissue specificity:Ubiquitous.,

Background	RNA 3'-terminal phosphate cyclase(RTCA) Homo sapiens This gene encodes a member of the RNA 3'-phosphate cyclase family. The encoded protein plays a role in RNA metabolism by catalyzing the ATP-dependent conversion of the 3'-phosphate of RNA substrates to a 2',3'-cyclic phosphodiester. Alternatively spliced transcript variants encoding multiple isoforms have been observed for this gene. [provided by RefSeq, Feb 2012],
matters needing attention	Avoid repeated freezing and thawing!
Usage suggestions	This product can be used in immunological reaction related experiments. For more information, please consult technical personnel.

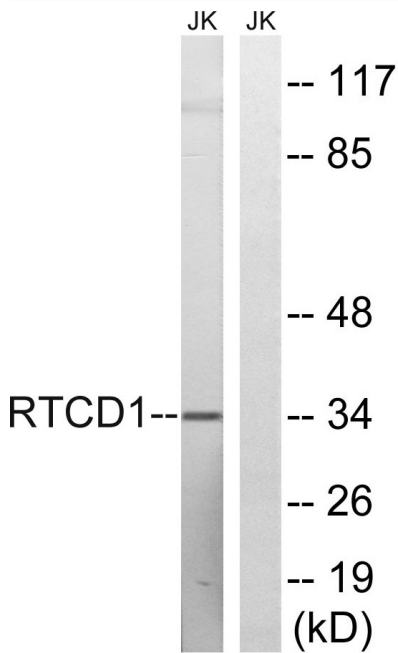
Nanjing BYabscience technology Co.,Ltd



Products Images



Immunohistochemistry analysis of paraffin-embedded human breast carcinoma tissue, using RTCD1 Antibody. The picture on the right is blocked with the synthesized peptide.



Western blot analysis of lysates from Jurkat cells, using RTCD1 Antibody. The lane on the right is blocked with the synthesized peptide.