



RSAD1 Polyclonal Antibody

Catalog No	BYab-04180
Isotype	IgG
Reactivity	Human;Mouse
Applications	WB;IHC;IF;ELISA
Gene Name	RSAD1
Protein Name	Radical S-adenosyl methionine domain-containing protein 1 mitochondrial
Immunogen	The antiserum was produced against synthesized peptide derived from human RSAD1. AA range:298-347
Specificity	RSAD1 Polyclonal Antibody detects endogenous levels of RSAD1 protein.
Formulation	Liquid in PBS containing 50% glycerol, 0.5% BSA and 0.02% sodium azide.
Source	Polyclonal, Rabbit,IgG
Purification	The antibody was affinity-purified from rabbit antiserum by affinity-chromatography using epitope-specific immunogen.
Dilution	WB: 1/500 - 1/2000. IHC: 1/100 - 1/300. ELISA: 1/5000.. IF 1:50-200
Concentration	1 mg/ml
Purity	≥90%
Storage Stability	-20°C/1 year
Synonyms	RSAD1; Radical S-adenosyl methionine domain-containing protein 1; mitochondrial; Oxygen-independent coproporphyrinogen-III oxidase-like protein RSAD1
Observed Band	52kD
Cell Pathway	Mitochondrion .
Tissue Specificity	Adipose tissue,Blood,Colon,Embryo,Placenta,
Function	cofactor: Binds 1 4Fe-4S cluster. The cluster is coordinated with 3 cysteines and an exchangeable S-adenosyl-L-methionine .,function: May be involved in porphyrin cofactor biosynthesis.,similarity: Belongs to the anaerobic coproporphyrinogen-III oxidase family.,
Background	cofactor: Binds 1 4Fe-4S cluster. The cluster is coordinated with 3 cysteines and an exchangeable S-adenosyl-L-methionine .,function: May be involved in porphyrin cofactor biosynthesis.,similarity: Belongs to the anaerobic coproporphyrinogen-III oxidase family.,

Nanjing BYabscience technology Co.,Ltd



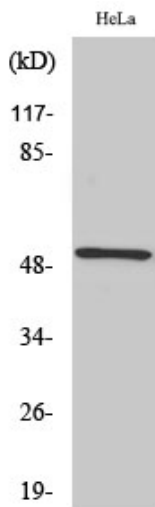
matters needing attention

Avoid repeated freezing and thawing!

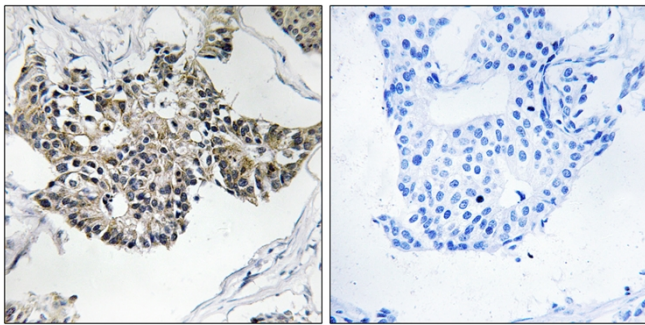
Usage suggestions

This product can be used in immunological reaction related experiments. For more information, please consult technical personnel.

Products Images

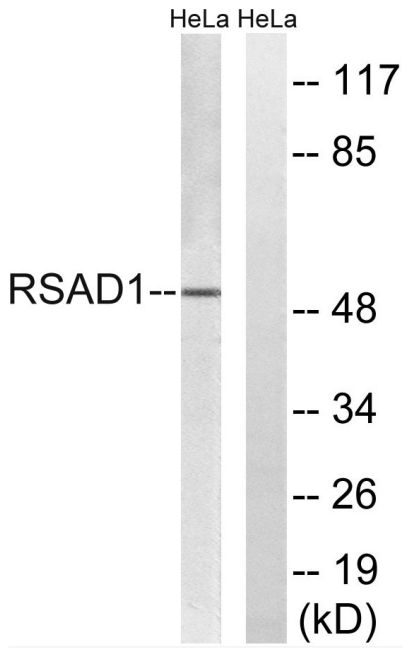


Western Blot analysis of various cells using RSAD1 Polyclonal Antibody



Immunohistochemistry analysis of paraffin-embedded human breast carcinoma tissue, using RSAD1 Antibody. The picture on the right is blocked with the synthesized peptide.

Nanjing BYabscience technology Co.,Ltd



Western blot analysis of lysates from HeLa cells, using RSAD1 Antibody. The lane on the right is blocked with the synthesized peptide.