



# RO60 Polyclonal Antibody

<b>Catalog No</b>	BYab-04179
<b>Isotype</b>	IgG
<b>Reactivity</b>	Human;Rat;Mouse;
<b>Applications</b>	WB;IHC
<b>Gene Name</b>	TROVE2
<b>Protein Name</b>	60 kDa SS-A/Ro ribonucleoprotein
<b>Immunogen</b>	The antiserum was produced against synthesized peptide derived from human TROVE2. AA range:311-360
<b>Specificity</b>	RO60 Polyclonal Antibody detects endogenous levels of RO60 protein.
<b>Formulation</b>	Liquid in PBS containing 50% glycerol, 0.5% BSA and 0.02% sodium azide.
<b>Source</b>	Polyclonal, Rabbit,IgG
<b>Purification</b>	The antibody was affinity-purified from rabbit antiserum by affinity-chromatography using epitope-specific immunogen.
<b>Dilution</b>	WB 1:500-2000;IHC-p 1:50-300
<b>Concentration</b>	1 mg/ml
<b>Purity</b>	≥90%
<b>Storage Stability</b>	-20°C/1 year
<b>Synonyms</b>	TROVE2; RO60; SSA2; 60 kDa SS-A/Ro ribonucleoprotein; 60 kDa Ro protein; 60 kDa ribonucleoprotein Ro; RoRNP; Ro 60 kDa autoantigen; Sjogren syndrome antigen A2; Sjogren syndrome type A antigen; SS-A; TROVE domain family member 2
<b>Observed Band</b>	70kD
<b>Cell Pathway</b>	Cytoplasm . Localized in cytoplasmic mRNP granules containing untranslated mRNAs. .
<b>Tissue Specificity</b>	Keratinocyte,Pre-B cell,Testis,
<b>Function</b>	disease:Sera from patients with systemic lupus erythematosus (SLE) often contain antibodies that react with the normal cellular SSA2 protein as if this antigen was foreign.,function:RNA-binding protein that binds to several small cytoplasmic RNA molecules known as Y RNAs. May stabilize these RNAs from degradation.,PTM:Phosphorylated upon DNA damage, probably by ATM or ATR.,similarity:Belongs to the Ro 60 kDa family.,similarity:Contains 1 TROVE domain.,subunit:Found in a complex with PUF60 and Y5 RNA. Interacts with

**Nanjing BYabscience technology Co.,Ltd**



RIP11.,

**Background**

disease:Sera from patients with systemic lupus erythematosus (SLE) often contain antibodies that react with the normal cellular SSA2 protein as if this antigen was foreign.,function:RNA-binding protein that binds to several small cytoplasmic RNA molecules known as Y RNAs. May stabilize these RNAs from degradation.,PTM:Phosphorylated upon DNA damage, probably by ATM or ATR.,similarity:Belongs to the Ro 60 kDa family.,similarity:Contains 1 TROVE domain.,subunit:Found in a complex with PUF60 and Y5 RNA. Interacts with RIP11.,

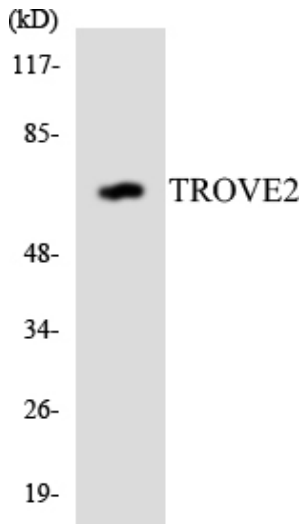
**matters needing attention**

Avoid repeated freezing and thawing!

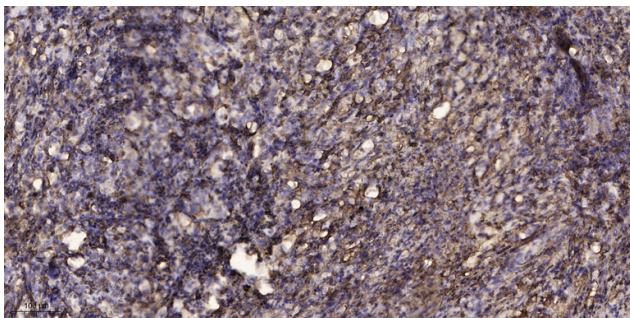
**Usage suggestions**

This product can be used in immunological reaction related experiments. For more information, please consult technical personnel.

**Products Images**



Western blot analysis of the lysates from HepG2 cells using TROVE2 antibody.



Immunohistochemical analysis of paraffin-embedded human Squamous cell carcinoma of lung. 1, Antibody was diluted at 1:200(4° overnight). 2, Tris-EDTA,pH9.0 was used for antigen retrieval. 3,Secondary antibody was diluted at 1:200(room temperature, 45min).

Nanjing BYabscience technology Co.,Ltd