



RKIP Polyclonal Antibody

Catalog No	BYab-04178
Isotype	IgG
Reactivity	Human;Rat;Mouse;
Applications	WB;IHC;IF;ELISA
Gene Name	PEBP1
Protein Name	Phosphatidylethanolamine-binding protein 1
Immunogen	The antiserum was produced against synthesized peptide derived from human PEBP1. AA range:105-154
Specificity	RKIP Polyclonal Antibody detects endogenous levels of RKIP protein.
Formulation	Liquid in PBS containing 50% glycerol, 0.5% BSA and 0.02% sodium azide.
Source	Polyclonal, Rabbit,IgG
Purification	The antibody was affinity-purified from rabbit antiserum by affinity-chromatography using epitope-specific immunogen.
Dilution	WB: 1/500 - 1/2000. ELISA: 1/5000.. IF 1:50-200
Concentration	1 mg/ml
Purity	≥90%
Storage Stability	-20°C/1 year
Synonyms	PEBP1; PBP; PEBP; Phosphatidylethanolamine-binding protein 1; PEBP-1; HCNPpp; Neuropolypeptide h3; Prostatic-binding protein; Raf kinase inhibitor protein; RKIP
Observed Band	23kD
Cell Pathway	Cytoplasm .
Tissue Specificity	Bone marrow,Brain,Cajal-Retzius cell,Epithelium,Erythrocyte
Function	disease:Stomatin is deficient in overhydrated hereditary stomatocytosis (OHS); also known as cryohydrocytosis or hereditary stomatocytosis. OHS results in red cell anomaly associated with hemolytic anemia. There is increased Na(+)/K(+)-permeability and hence a disorder of cell volume control. The nature of the molecular defect underlying OHS is unknown.,function:binds ATP, opioids and phosphatidylethanolamine. Has lower affinity for phosphatidylinositol and phosphatidylcholine. Serine protease inhibitor which inhibits thrombin, neuropsin and chymotrypsin but not trypsin, tissue type plasminogen activator and elastase.,function:HCNP may be involved in the function of the presynaptic

Nanjing BYabscience technology Co.,Ltd



cholinergic neurons of the central nervous system. HCNP increases the production of choline acetyltransferase but not acetylcholinesterase. Seems to be mediated by a specific receptor.,function:Thought to regu

Background

This gene encodes a member of the phosphatidylethanolamine-binding family of proteins and has been shown to modulate multiple signaling pathways, including the MAP kinase (MAPK), NF-kappa B, and glycogen synthase kinase-3 (GSK-3) signaling pathways. The encoded protein can be further processed to form a smaller cleavage product, hippocampal cholinergic neurostimulating peptide (HCNP), which may be involved in neural development. This gene has been implicated in numerous human cancers and may act as a metastasis suppressor gene. Multiple pseudogenes of this gene have been identified in the genome. [provided by RefSeq, Jul 2015],

matters needing attention

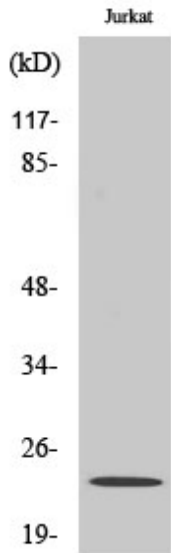
Avoid repeated freezing and thawing!

Usage suggestions

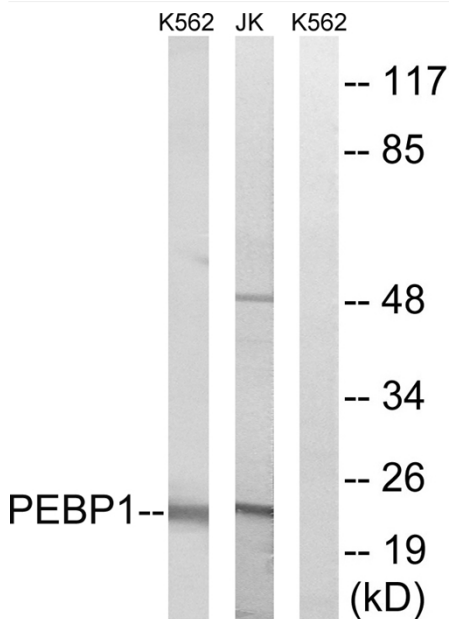
This product can be used in immunological reaction related experiments. For more information, please consult technical personnel.



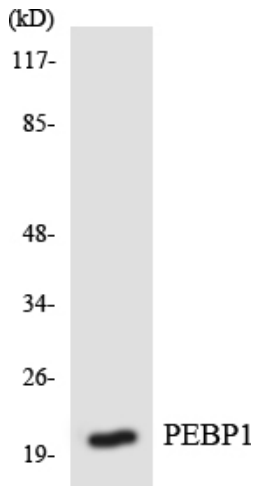
Products Images



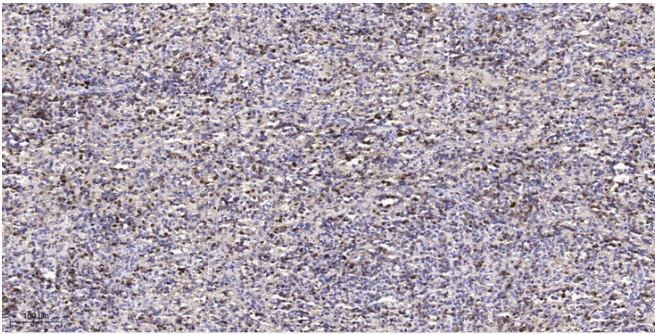
Western Blot analysis of various cells using RKIP Polyclonal Antibody



Western blot analysis of lysates from Jurkat and K562 cells, using PEBP1 Antibody. The lane on the right is blocked with the synthesized peptide.



Western blot analysis of the lysates from HepG2 cells using PEBP1 antibody.



Immunohistochemical analysis of paraffin-embedded human spleen tissue. 1, primary Antibody was diluted at 1:200(4° overnight). 2, Sodium citrate pH 6.0 was used for antigen retrieval(>98°C, 20min). 3, Secondary antibody was diluted at 1:200(room temperature, 30min) Negative control was used by secondary antibody only.)