



# Rit1 Polyclonal Antibody

<b>Catalog No</b>	BYab-04177
<b>Isotype</b>	IgG
<b>Reactivity</b>	Human;Mouse
<b>Applications</b>	WB;ELISA;IHC
<b>Gene Name</b>	RIT1
<b>Protein Name</b>	GTP-binding protein Rit1
<b>Immunogen</b>	The antiserum was produced against synthesized peptide derived from human RIT1. AA range:170-219
<b>Specificity</b>	Rit1 Polyclonal Antibody detects endogenous levels of Rit1 protein.
<b>Formulation</b>	Liquid in PBS containing 50% glycerol, 0.5% BSA and 0.02% sodium azide.
<b>Source</b>	Polyclonal, Rabbit,IgG
<b>Purification</b>	The antibody was affinity-purified from rabbit antiserum by affinity-chromatography using epitope-specific immunogen.
<b>Dilution</b>	WB 1:500-2000;IHC-p 1:50-300; ELISA 2000-20000
<b>Concentration</b>	1 mg/ml
<b>Purity</b>	≥90%
<b>Storage Stability</b>	-20°C/1 year
<b>Synonyms</b>	RIT1; RIBB; RIT; ROC1; GTP-binding protein Rit1; Ras-like protein expressed in many tissues; Ras-like without CAAX protein 1
<b>Observed Band</b>	25kD
<b>Cell Pathway</b>	Cell membrane.
<b>Tissue Specificity</b>	Expressed in many tissues.
<b>Function</b>	enzyme regulation:Alternate between an inactive form bound to GDP and an active form bound to GTP.;function:Plays a crucial role in coupling NGF stimulation to the activation of both EPHB2 and MAPK14 signaling pathways and in NGF-dependent neuronal differentiation.;miscellaneous:Shows rapid uncatalyzed guanine nucleotide dissociation rates, which are much faster than those of most Ras subfamily members.;miscellaneous:Stimulation of the NGF and EGF receptor signaling pathways results in rapid and prolonged activation.;similarity:Belongs to the small GTPase superfamily. Ras family.;subunit:Interacts with MLLT4, the C-terminal domain of RALGDS and RLF, but not with RIN1 and PIK3CA. RLF binds exclusively to the active GTP-bound

Nanjing BYabscience technology Co.,Ltd



form. Strongly interacts with BRAF, but only weakly with RAF1. BARF and RAF1 association is dependent upon the GTP-bound state. Interacts with RGL3.,tissue specificit

**Background**

This gene encodes a member of a subfamily of Ras-related GTPases. The encoded protein is involved in regulating p38 MAPK-dependent signaling cascades related to cellular stress. This protein also cooperates with nerve growth factor to promote neuronal development and regeneration. Alternate splicing results in multiple transcript variants. [provided by RefSeq, Feb 2012],

**matters needing attention**

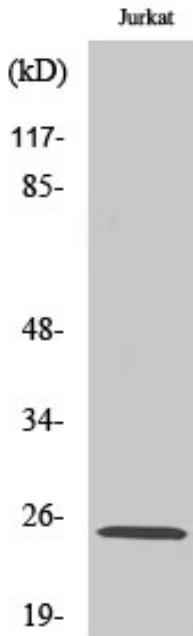
Avoid repeated freezing and thawing!

**Usage suggestions**

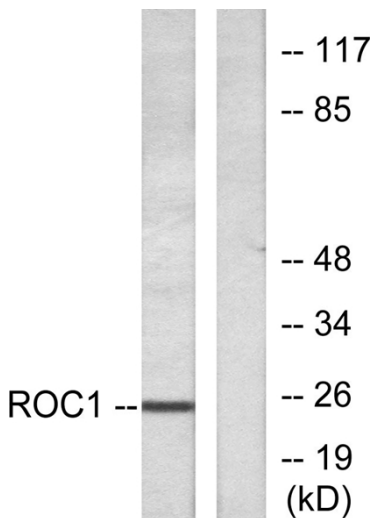
This product can be used in immunological reaction related experiments. For more information, please consult technical personnel.



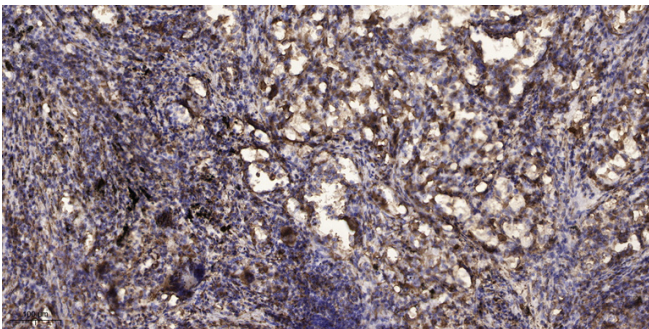
## Products Images



Western Blot analysis of various cells using Rit1 Polyclonal Antibody diluted at 1:500



Western blot analysis of lysates from Jurkat cells, using RIT1 Antibody. The lane on the right is blocked with the synthesized peptide.



Immunohistochemical analysis of paraffin-embedded human Squamous cell carcinoma of lung. 1, Antibody was diluted at 1:200(4° overnight). 2, Tris-EDTA,pH9.0 was used for antigen retrieval. 3,Secondary antibody was diluted at 1:200(room temperature, 45min).

Nanjing BYabscience technology Co.,Ltd