



# Ribosomal Protein S5 Polyclonal Antibody

|                           |   |
|---------------------------|---|
| <b>Catalog No</b>         | BYab-04170  |
| <b>Isotype</b>            | IgG   |
| <b>Reactivity</b>         | Human;Mouse;Rat   |
| <b>Applications</b>       | WB;ELISA;IHC  |
| <b>Gene Name</b>          | RPS5  |
| <b>Protein Name</b>       | 40S ribosomal protein S5  |
| <b>Immunogen</b>          | Synthesized peptide derived from Ribosomal Protein S5 . at AA range: 60-140   |
| <b>Specificity</b>        | Ribosomal Protein S5 Polyclonal Antibody detects endogenous levels of Ribosomal Protein S5 protein.   |
| <b>Formulation</b>        | Liquid in PBS containing 50% glycerol, 0.5% BSA and 0.02% sodium azide.   |
| <b>Source</b>             | Polyclonal, Rabbit,IgG  |
| <b>Purification</b>       | The antibody was affinity-purified from rabbit antiserum by affinity-chromatography using epitope-specific immunogen.   |
| <b>Dilution</b>           | WB 1:500-2000;IHC-p 1:50-300; ELISA 2000-20000  |
| <b>Concentration</b>      | 1 mg/ml   |
| <b>Purity</b>             | ≥90%  |
| <b>Storage Stability</b>  | -20°C/1 year  |
| <b>Synonyms</b>           | RPS5; 40S ribosomal protein S5  |
| <b>Observed Band</b>      | 22kD  |
| <b>Cell Pathway</b>       | nucleoplasm,cytosol,focal adhesion,small ribosomal subunit,membrane,cytosolic small ribosomal subunit,intracellular ribonucleoprotein complex,extracellular matrix,extracellular exosome,   |
| <b>Tissue Specificity</b> | B-cell lymphoma,Bone,Cervix carcinoma,Colon,Ovary,Placenta,   |
| <b>Function</b>           | similarity:Belongs to the ribosomal protein S7P family.,  |
| <b>Background</b>         | Ribosomes, the organelles that catalyze protein synthesis, consist of a small 40S subunit and a large 60S subunit. Together these subunits are composed of 4 RNA species and approximately 80 structurally distinct proteins. This gene encodes a ribosomal protein that is a component of the 40S subunit. The protein belongs to the S7P family of ribosomal proteins. It is located in the cytoplasm. Variable expression of this gene in colorectal cancers compared to adjacent normal tissues has been observed, although no correlation between the level of expression and the severity of the disease has been found. As is typical for genes encoding |

Nanjing BYabscience technology Co.,Ltd



ribosomal proteins, there are multiple processed pseudogenes of this gene dispersed through the genome. [provided by RefSeq, Jul 2008],

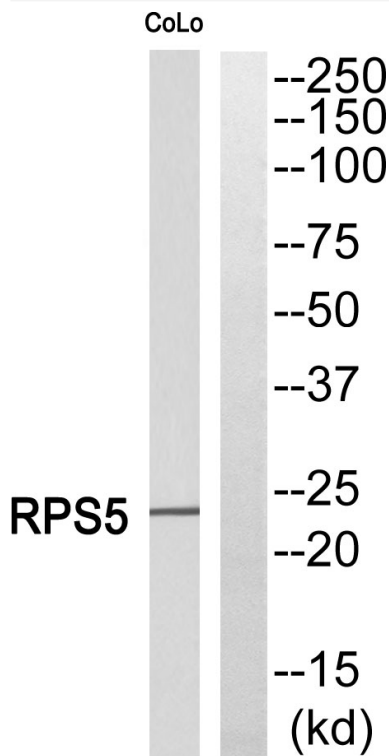
**matters needing attention**

Avoid repeated freezing and thawing!

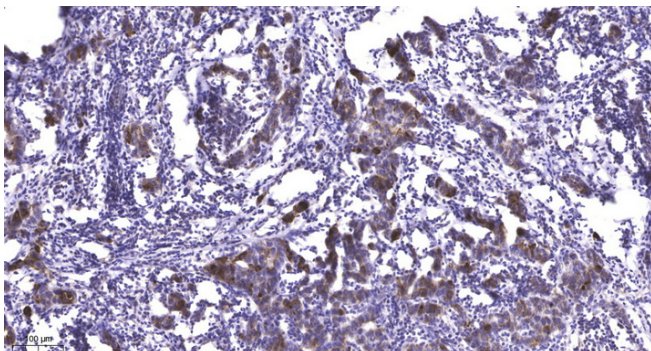
**Usage suggestions**

This product can be used in immunological reaction related experiments. For more information, please consult technical personnel.

**Products Images**



Western blot analysis of RPS5 Antibody. The lane on the right is blocked with the RPS5 peptide.



Immunohistochemical analysis of paraffin-embedded human Breast cancer. 1, Antibody was diluted at 1:200(4° overnight). 2, Tris-EDTA,pH9.0 was used for antigen retrieval. 3,Secondary antibody was diluted at 1:200(room temperature, 45min).