



# Ribosomal Protein S4Y1 Polyclonal Antibody

|                           |  |
|---------------------------|--|
| <b>Catalog No</b>         | BYab-04169   |
| <b>Isotype</b>            | IgG  |
| <b>Reactivity</b>         | Human;Rat;Mouse;   |
| <b>Applications</b>       | WB;IHC;IF;ELISA  |
| <b>Gene Name</b>          | RPS4Y1   |
| <b>Protein Name</b>       | 40S ribosomal protein S4 Y isoform 1   |
| <b>Immunogen</b>          | The antiserum was produced against synthesized peptide derived from human RPS4Y1. AA range:214-263   |
| <b>Specificity</b>        | Ribosomal Protein S4Y1 Polyclonal Antibody detects endogenous levels of Ribosomal Protein S4Y1 protein.  |
| <b>Formulation</b>        | Liquid in PBS containing 50% glycerol, 0.5% BSA and 0.02% sodium azide.  |
| <b>Source</b>             | Polyclonal, Rabbit,IgG   |
| <b>Purification</b>       | The antibody was affinity-purified from rabbit antiserum by affinity-chromatography using epitope-specific immunogen.  |
| <b>Dilution</b>           | Western Blot: 1/500 - 1/2000. Immunohistochemistry: 1/100 - 1/300. Immunofluorescence: 1/200 - 1/1000. ELISA: 1/20000. Not yet tested in other applications.   |
| <b>Concentration</b>      | 1 mg/ml  |
| <b>Purity</b>             | ≥90%   |
| <b>Storage Stability</b>  | -20°C/1 year   |
| <b>Synonyms</b>           | RPS4Y1; RPS4Y; 40S ribosomal protein S4; Y isoform 1   |
| <b>Observed Band</b>      | 29kD   |
| <b>Cell Pathway</b>       | nucleus,nucleoplasm,cytosol,ribosome,polysome,membrane,cytosolic small ribosomal subunit,  |
| <b>Tissue Specificity</b> | Coronary artery,Fetal liver,PCR rescued clones,Placenta,   |
| <b>Function</b>           | miscellaneous:This isoform is encoded on the Y chromosome.,similarity:Belongs to the ribosomal protein S4e family.,similarity:Contains 1 S4 RNA-binding domain.,   |
| <b>Background</b>         | Cytoplasmic ribosomes, organelles that catalyze protein synthesis, consist of a small 40S subunit and a large 60S subunit. Together these subunits are composed of 4 RNA species and approximately 80 structurally distinct proteins. This gene encodes ribosomal protein S4, a component of the 40S subunit. Ribosomal protein S4 is the only ribosomal protein known to be encoded by more than one gene, namely this gene and ribosomal protein S4, X-linked (RPS4X). |

**Nanjing BYabscience technology Co.,Ltd**



The 2 isoforms encoded by these genes are not identical, but are functionally equivalent. Ribosomal protein S4 belongs to the S4E family of ribosomal proteins. It has been suggested that haploinsufficiency of the ribosomal protein S4 genes plays a role in Turner syndrome; however, this hypothesis is controversial. As is typical for genes encoding ribosomal proteins, there are multiple processed pseudogenes of this gene dispersed throug

**matters needing attention**

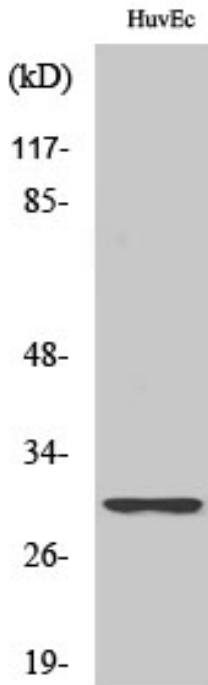
Avoid repeated freezing and thawing!

**Usage suggestions**

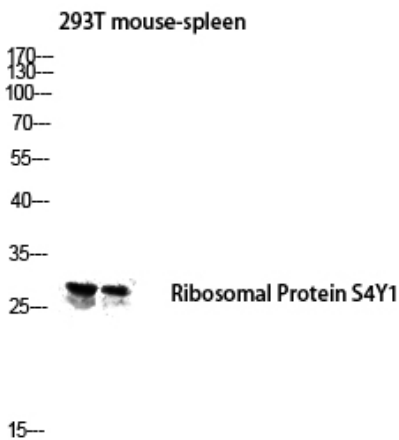
This product can be used in immunological reaction related experiments. For more information, please consult technical personnel.



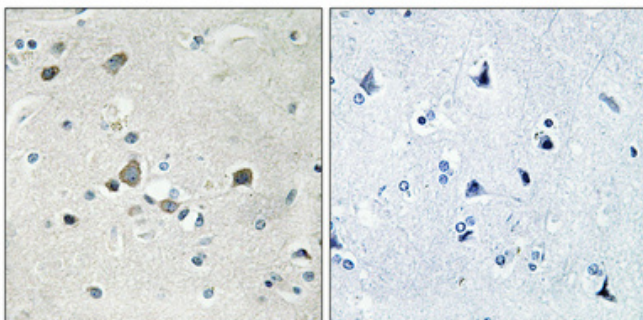
## Products Images



Western Blot analysis of various cells using Ribosomal Protein S4Y1 Polyclonal Antibody diluted at 1:1000

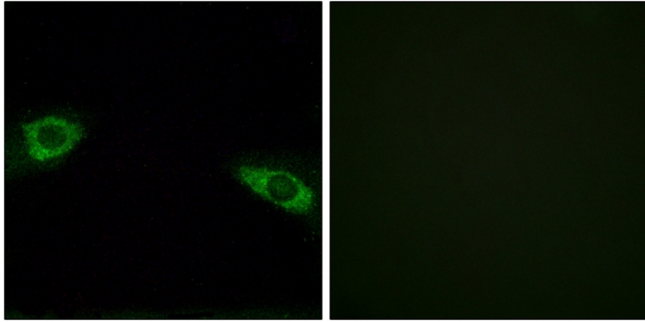


Western blot analysis of 293T mouse-spleen lysis using Ribosomal Protein S4Y1 antibody. Antibody was diluted at 1:1000

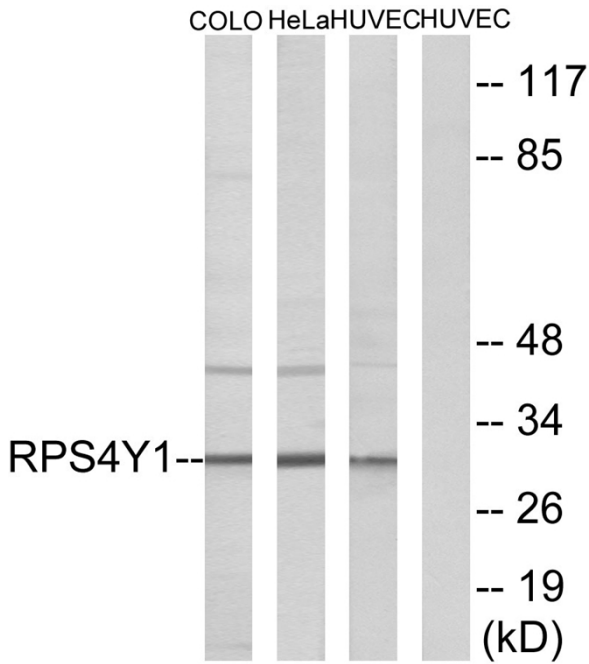


Immunohistochemical analysis of paraffin-embedded Human brain. Antibody was diluted at 1:100(4° overnight). High-pressure and temperature Tris-EDTA,pH8.0 was used for antigen retrieval. Negative contrl (right) obtaned from antibody was pre-absorbed by immunogen peptide.

Nanjing BYabscience technology Co.,Ltd



Immunofluorescence analysis of HUVEC cells, using RPS4Y1 Antibody. The picture on the right is blocked with the synthesized peptide.



Western blot analysis of lysates from HUVEC, HeLa, and COLO cells, using RPS4Y1 Antibody. The lane on the right is blocked with the synthesized peptide.