



# Ribosomal Protein S25 Polyclonal Antibody

<b>Catalog No</b>	BYab-04165
<b>Isotype</b>	IgG
<b>Reactivity</b>	Human;Mouse;Rat
<b>Applications</b>	IHC;IF;ELISA
<b>Gene Name</b>	RPS25
<b>Protein Name</b>	40S ribosomal protein S25
<b>Immunogen</b>	The antiserum was produced against synthesized peptide derived from human RPS25. AA range:76-125
<b>Specificity</b>	Ribosomal Protein S25 Polyclonal Antibody detects endogenous levels of Ribosomal Protein S25 protein.
<b>Formulation</b>	Liquid in PBS containing 50% glycerol, 0.5% BSA and 0.02% sodium azide.
<b>Source</b>	Polyclonal, Rabbit,IgG
<b>Purification</b>	The antibody was affinity-purified from rabbit antiserum by affinity-chromatography using epitope-specific immunogen.
<b>Dilution</b>	WB 1:500-2000 ,IHC: 1/100 - 1/300. ELISA: 1/10000.. IF 1:50-200
<b>Concentration</b>	1 mg/ml
<b>Purity</b>	≥90%
<b>Storage Stability</b>	-20°C/1 year
<b>Synonyms</b>	RPS25; 40S ribosomal protein S25
<b>Observed Band</b>	
<b>Cell Pathway</b>	nucleus,nucleoplasm,nucleolus,cytoplasm,cytosol,ribosome,small ribosomal subunit,cytosolic small ribosomal subunit,extracellular matrix,extracellular exosome,
<b>Tissue Specificity</b>	Pancreas,Placenta,Skin,
<b>Function</b>	similarity:Belongs to the ribosomal protein S25e family.,
<b>Background</b>	Ribosomes, the organelles that catalyze protein synthesis, consist of a small 40S subunit and a large 60S subunit. Together these subunits are composed of 4 RNA species and approximately 80 structurally distinct proteins. This gene encodes a ribosomal protein that is a component of the 40S subunit. The protein belongs to the S25E family of ribosomal proteins. It is located in the cytoplasm. As is typical for genes encoding ribosomal proteins, there are multiple processed pseudogenes of this gene dispersed through the genome. [provided by RefSeq,

Nanjing BYabscience technology Co.,Ltd



Jul 2008],

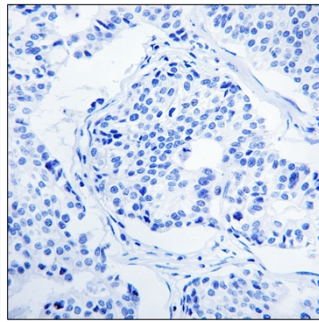
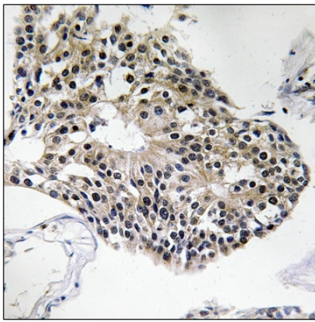
**matters needing attention**

Avoid repeated freezing and thawing!

**Usage suggestions**

This product can be used in immunological reaction related experiments. For more information, please consult technical personnel.

## Products Images



Immunohistochemistry analysis of paraffin-embedded human breast carcinoma tissue, using RPS25 Antibody. The picture on the right is blocked with the synthesized peptide.