



# Ribosomal Protein S2 Polyclonal Antibody

<b>Catalog No</b>	BYab-04161
<b>Isotype</b>	IgG
<b>Reactivity</b>	Human;Mouse;Rat
<b>Applications</b>	WB;ELISA;IHC
<b>Gene Name</b>	RPS2
<b>Protein Name</b>	40S ribosomal protein S2
<b>Immunogen</b>	The antiserum was produced against synthesized peptide derived from human RPS2. AA range:244-293
<b>Specificity</b>	Ribosomal Protein S2 Polyclonal Antibody detects endogenous levels of Ribosomal Protein S2 protein.
<b>Formulation</b>	Liquid in PBS containing 50% glycerol, 0.5% BSA and 0.02% sodium azide.
<b>Source</b>	Polyclonal, Rabbit,IgG
<b>Purification</b>	The antibody was affinity-purified from rabbit antiserum by affinity-chromatography using epitope-specific immunogen.
<b>Dilution</b>	WB 1:500-2000;IHC-p 1:50-300; ELISA 2000-20000
<b>Concentration</b>	1 mg/ml
<b>Purity</b>	≥90%
<b>Storage Stability</b>	-20°C/1 year
<b>Synonyms</b>	RPS2; RPS4; 40S ribosomal protein S2; 40S ribosomal protein S4; Protein LLRep3
<b>Observed Band</b>	31kD
<b>Cell Pathway</b>	nucleus,nucleoplasm,nucleolus,cytoplasm,cytosol,ribosome,cell-cell adherens junction,focal adhesion,small ribosomal subunit,membrane,cytosolic small ribosomal subunit,extracellular exosome,
<b>Tissue Specificity</b>	Brain,Cervix,Colon,Epithelium,Eye,Kidney,Lung,Mammary gland,Muscle,Placenta,Skin,Te
<b>Function</b>	similarity:Belongs to the ribosomal protein S5P family.,similarity:Contains 1 S5 DRBM domain.,
<b>Background</b>	Ribosomes, the organelles that catalyze protein synthesis, consist of a small 40S subunit and a large 60S subunit. Together these subunits are composed of 4 RNA species and approximately 80 structurally distinct proteins. This gene encodes a ribosomal protein that is a component of the 40S subunit. The protein belongs to the S5P family of ribosomal proteins. It is located in the cytoplasm. This gene shares sequence similarity with mouse LLRep3. It is co-transcribed with the small

Nanjing BYabscience technology Co.,Ltd



nucleolar RNA gene U64, which is located in its third intron. As is typical for genes encoding ribosomal proteins, there are multiple processed pseudogenes of this gene dispersed through the genome. [provided by RefSeq, Jul 2008],

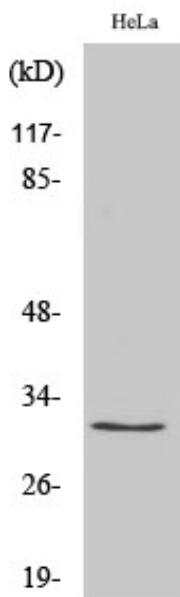
**matters needing attention**

Avoid repeated freezing and thawing!

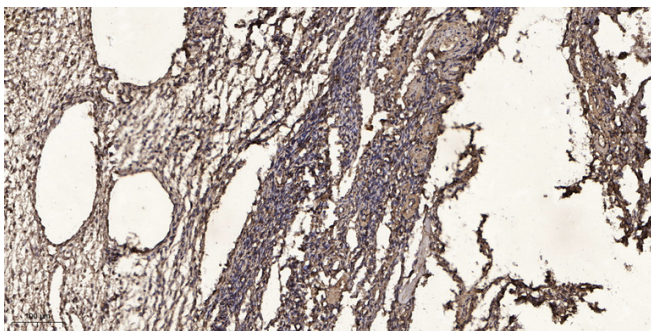
**Usage suggestions**

This product can be used in immunological reaction related experiments. For more information, please consult technical personnel.

**Products Images**



Western Blot analysis of various cells using Ribosomal Protein S2 Polyclonal Antibody diluted at 1:2000



Immunohistochemical analysis of paraffin-embedded human oophoroma. 1, Antibody was diluted at 1:200(4° overnight). 2, Tris-EDTA,pH9.0 was used for antigen retrieval. 3,Secondary antibody was diluted at 1:200(room temperature, 45min).