



Ribosomal Protein S19BP Polyclonal Antibody

Catalog No	BYab-04160
Isotype	IgG
Reactivity	Human;Rat;Mouse;
Applications	IHC;IF;ELISA
Gene Name	RPS19BP1
Protein Name	Active regulator of SIRT1
Immunogen	The antiserum was produced against synthesized peptide derived from human RPS19BP1. AA range:71-120
Specificity	Ribosomal Protein S19BP Polyclonal Antibody detects endogenous levels of Ribosomal Protein S19BP protein.
Formulation	Liquid in PBS containing 50% glycerol, 0.5% BSA and 0.02% sodium azide.
Source	Polyclonal, Rabbit,IgG
Purification	The antibody was affinity-purified from rabbit antiserum by affinity-chromatography using epitope-specific immunogen.
Dilution	IHC: 1/100 - 1/300. ELISA: 1/10000.. IF 1:50-200
Concentration	1 mg/ml
Purity	≥90%
Storage Stability	-20°C/1 year
Synonyms	RPS19BP1; AROS; Active regulator of SIRT1; 40S ribosomal protein S19-binding protein 1; RPS19-binding protein 1; S19BP
Observed Band	
Cell Pathway	Nucleus, nucleolus .
Tissue Specificity	Widely expressed (at protein level).
Function	function:Direct regulator of SIRT1. Enhances SIRT1-mediated deacetylation of p53/TP53, thereby participating in inhibition of p53/TP53-mediated transcriptional activity.,similarity:Belongs to the AROS family.,subunit:Interacts with RPS19 (By similarity). Interacts with SIRT1.,tissue specificity:Widely expressed (at protein level),.
Background	function:Direct regulator of SIRT1. Enhances SIRT1-mediated deacetylation of p53/TP53, thereby participating in inhibition of p53/TP53-mediated transcriptional activity.,similarity:Belongs to the AROS family.,subunit:Interacts with RPS19 (By similarity). Interacts with SIRT1.,tissue specificity:Widely expressed (at protein

Nanjing BYabscience technology Co.,Ltd



level).,

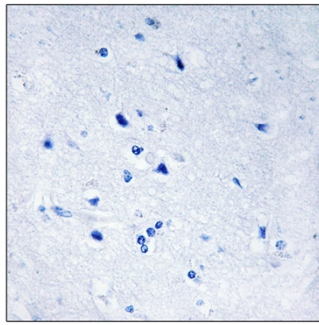
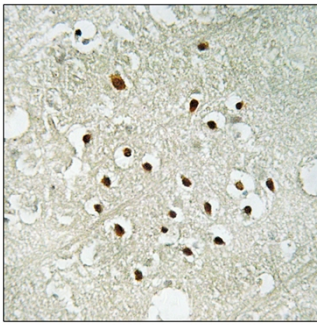
matters needing attention

Avoid repeated freezing and thawing!

Usage suggestions

This product can be used in immunological reaction related experiments. For more information, please consult technical personnel.

Products Images



Immunohistochemistry analysis of paraffin-embedded human brain tissue, using RPS19BP1 Antibody. The picture on the right is blocked with the synthesized peptide.