



Ribosomal Protein L7 Polyclonal Antibody

Catalog No	BYab-04151
Isotype	IgG
Reactivity	Human;Mouse;Rat;Cat
Applications	WB;IHC;IF;ELISA
Gene Name	RPL7
Protein Name	60S ribosomal protein L7
Immunogen	The antiserum was produced against synthesized peptide derived from human RPL7. AA range:199-248
Specificity	Ribosomal Protein L7 Polyclonal Antibody detects endogenous levels of Ribosomal Protein L7 protein.
Formulation	Liquid in PBS containing 50% glycerol, 0.5% BSA and 0.02% sodium azide.
Source	Polyclonal, Rabbit,IgG
Purification	The antibody was affinity-purified from rabbit antiserum by affinity-chromatography using epitope-specific immunogen.
Dilution	WB: 1/500 - 1/2000. IHC: 1/100 - 1/300. ELISA: 1/10000.. IF 1:50-200
Concentration	1 mg/ml
Purity	≥90%
Storage Stability	-20°C/1 year
Synonyms	RPL7; 60S ribosomal protein L7
Observed Band	32kD
Cell Pathway	nucleus,nucleolus,cytoplasm,cytosol,ribosome,focal adhesion,membrane,cytosolic large ribosomal subunit,intracellular ribonucleoprotein complex,extracellular exosome,
Tissue Specificity	Bone marrow,Eye,Fibroblast,Hepatoma,Lung,Mammary gland,Muscle,Pancreas,Skin,
Function	function: Binds to G-rich structures in 28S rRNA and in mRNAs. Plays a regulatory role in the translation apparatus; inhibits cell-free translation of mRNAs.,similarity: Belongs to the ribosomal protein L30P family.,subunit: Homodimer.,
Background	Ribosomes, the organelles that catalyze protein synthesis, consist of a small 40S subunit and a large 60S subunit. Together these subunits are composed of 4 RNA species and approximately 80 structurally distinct proteins. This gene encodes a ribosomal protein that is a component of the 60S subunit. The protein belongs to the L30P family of ribosomal proteins. It contains an N-terminal basic

Nanjing BYabscience technology Co.,Ltd



region-leucine zipper (BZIP)-like domain and the RNP consensus submotif RNP2. In vitro the BZIP-like domain mediates homodimerization and stable binding to DNA and RNA, with a preference for 28S rRNA and mRNA. The protein can inhibit cell-free translation of mRNAs, suggesting that it plays a regulatory role in the translation apparatus. It is located in the cytoplasm. The protein has been shown to be an autoantigen in patients with systemic autoimmune diseases, such as systemic lupus erythematosus. As is typical

matters needing attention

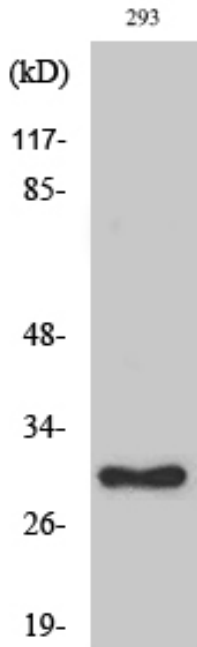
Avoid repeated freezing and thawing!

Usage suggestions

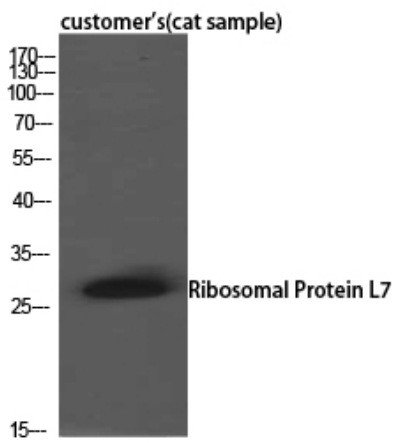
This product can be used in immunological reaction related experiments. For more information, please consult technical personnel.



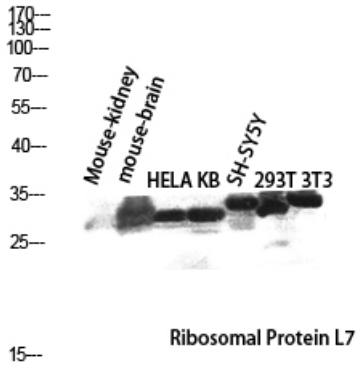
Products Images



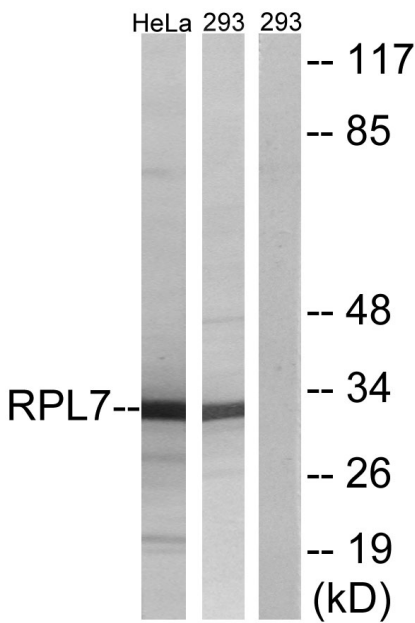
Western Blot analysis of various cells using Ribosomal Protein L7 Polyclonal Antibody diluted at 1:2000



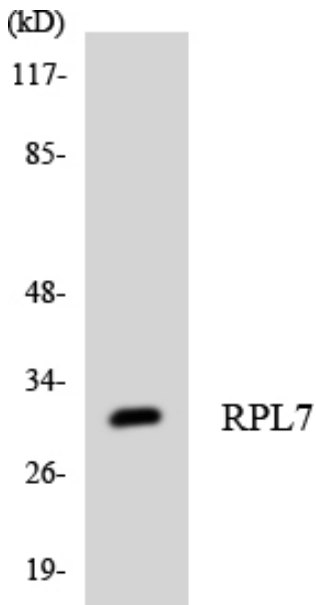
Western Blot analysis of customer's(cat sample) using Ribosomal Protein L7 Polyclonal Antibody. Antibody was diluted at 1:2000



Western blot analysis of Mouse-kidney mouse-brain HELA KB SH-SY5Y 293T 3T3 lysis using Ribosomal Protein L7 antibody. Antibody was diluted at 1:2000



Western blot analysis of lysates from 293 and HeLa cells, using RPL7 Antibody. The lane on the right is blocked with the synthesized peptide.



Western blot analysis of the lysates from K562 cells using RPL7 antibody.