



Ribosomal Protein L3L Polyclonal Antibody

Catalog No	BYab-04148
Isotype	IgG
Reactivity	Human;Rat;Mouse;
Applications	IHC;IF;ELISA
Gene Name	RPL3L
Protein Name	60S ribosomal protein L3-like
Immunogen	The antiserum was produced against synthesized peptide derived from human RPL3L. AA range:211-260
Specificity	Ribosomal Protein L3L Polyclonal Antibody detects endogenous levels of Ribosomal Protein L3L protein.
Formulation	Liquid in PBS containing 50% glycerol, 0.5% BSA and 0.02% sodium azide.
Source	Polyclonal, Rabbit,IgG
Purification	The antibody was affinity-purified from rabbit antiserum by affinity-chromatography using epitope-specific immunogen.
Dilution	Immunohistochemistry: 1/100 - 1/300. Immunofluorescence: 1/200 - 1/1000. ELISA: 1/40000. Not yet tested in other applications.
Concentration	1 mg/ml
Purity	≥90%
Storage Stability	-20°C/1 year
Synonyms	RPL3L; 60S ribosomal protein L3-like
Observed Band	
Cell Pathway	cytosol,ribosome,membrane,cytosolic large ribosomal subunit,
Tissue Specificity	Heart muscle,PNS,
Function	similarity:Belongs to the ribosomal protein L3P family.,
Background	This gene encodes a protein that shares sequence similarity with ribosomal protein L3. The protein belongs to the L3P family of ribosomal proteins. Unlike the ubiquitous expression of ribosomal protein genes, this gene has a tissue-specific pattern of expression, with the highest levels of expression in skeletal muscle and heart. It is not currently known whether the encoded protein is a functional ribosomal protein or whether it has evolved a function that is independent of the ribosome. [provided by RefSeq, Jul 2008],

Nanjing BYabscience technology Co.,Ltd



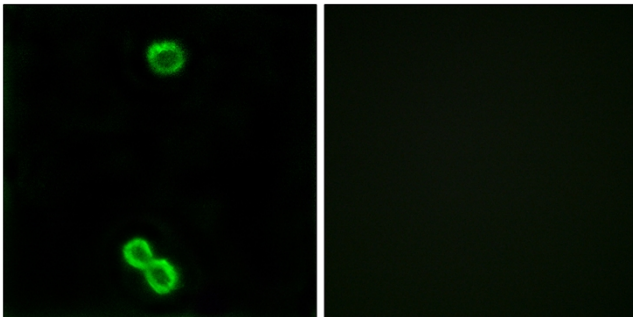
matters needing attention

Avoid repeated freezing and thawing!

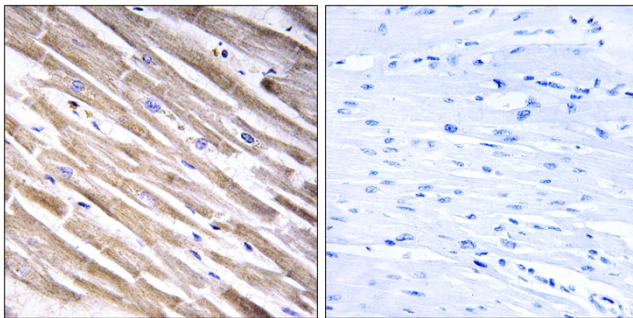
Usage suggestions

This product can be used in immunological reaction related experiments. For more information, please consult technical personnel.

Products Images



Immunofluorescence analysis of MCF7 cells, using RPL3L Antibody. The picture on the right is blocked with the synthesized peptide.



Immunohistochemistry analysis of paraffin-embedded human heart tissue, using RPL3L Antibody. The picture on the right is blocked with the synthesized peptide.