



# Ribosomal Protein L27A Polyclonal Antibody

<b>Catalog No</b>	BYab-04136
<b>Isotype</b>	IgG
<b>Reactivity</b>	Human;Mouse;Rat
<b>Applications</b>	WB;IHC;IF;ELISA
<b>Gene Name</b>	RPL27A
<b>Protein Name</b>	60S ribosomal protein L27a
<b>Immunogen</b>	The antiserum was produced against synthesized peptide derived from human RPL27A. AA range:99-148
<b>Specificity</b>	Ribosomal Protein L27A Polyclonal Antibody detects endogenous levels of Ribosomal Protein L27A protein.
<b>Formulation</b>	Liquid in PBS containing 50% glycerol, 0.5% BSA and 0.02% sodium azide.
<b>Source</b>	Polyclonal, Rabbit,IgG
<b>Purification</b>	The antibody was affinity-purified from rabbit antiserum by affinity-chromatography using epitope-specific immunogen.
<b>Dilution</b>	Western Blot: 1/500 - 1/2000. Immunohistochemistry: 1/100 - 1/300. Immunofluorescence: 1/200 - 1/1000. ELISA: 1/40000. Not yet tested in other applications.
<b>Concentration</b>	1 mg/ml
<b>Purity</b>	≥90%
<b>Storage Stability</b>	-20°C/1 year
<b>Synonyms</b>	RPL27A; 60S ribosomal protein L27a
<b>Observed Band</b>	20kD
<b>Cell Pathway</b>	cytosol,ribosome,large ribosomal subunit,membrane,cytosolic large ribosomal subunit,
<b>Tissue Specificity</b>	Brain,Colon,Kidney,Lymph,
<b>Function</b>	similarity:Belongs to the ribosomal protein L15P family.,
<b>Background</b>	Ribosomes, the organelles that catalyze protein synthesis, consist of a small 40S subunit and a large 60S subunit. Together these subunits are composed of 4 RNA species and approximately 80 structurally distinct proteins. This gene encodes a ribosomal protein that is a component of the 60S subunit. The protein belongs to the L15P family of ribosomal proteins. It is located in the cytoplasm. Variable expression of this gene in colorectal cancers compared to adjacent normal tissues has been observed, although no correlation between the level of expression and

Nanjing BYabscience technology Co.,Ltd



the severity of the disease has been found. As is typical for genes encoding ribosomal proteins, multiple processed pseudogenes derived from this gene are dispersed through the genome. [provided by RefSeq, Jul 2008],

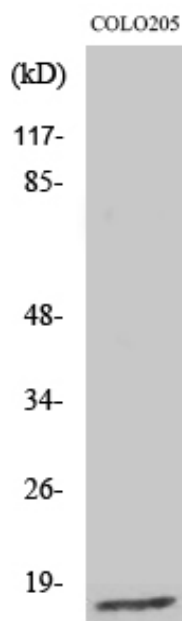
**matters needing attention**

Avoid repeated freezing and thawing!

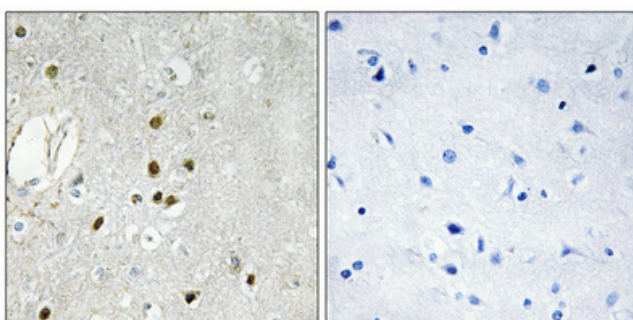
**Usage suggestions**

This product can be used in immunological reaction related experiments. For more information, please consult technical personnel.

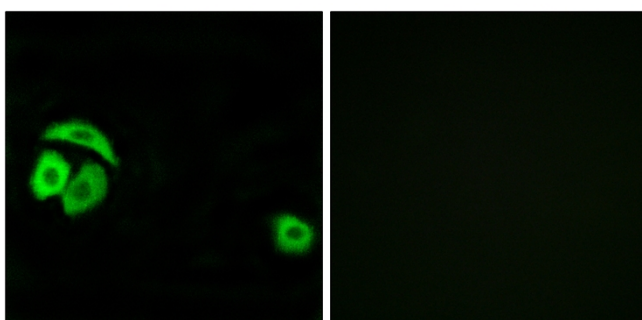
## Products Images



Western Blot analysis of various cells using Ribosomal Protein L27A Polyclonal Antibody diluted at 1:2000

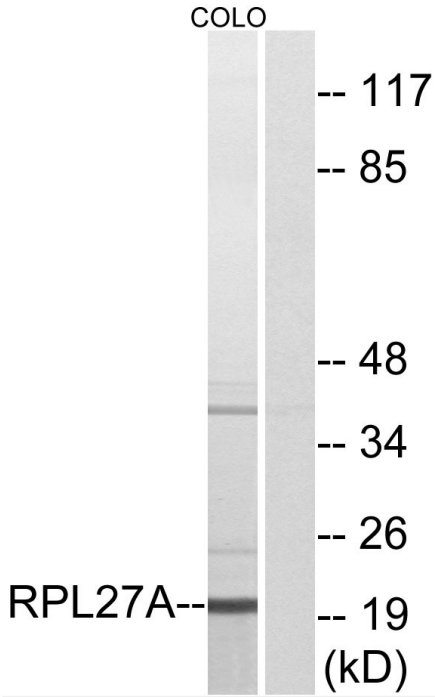


Immunohistochemical analysis of paraffin-embedded Human brain. Antibody was diluted at 1:100(4° overnight). High-pressure and temperature Tris-EDTA,pH8.0 was used for antigen retrieval. Negative control (right) obtained from antibody was pre-absorbed by immunogen peptide.



Immunofluorescence analysis of A549 cells, using RPL27A Antibody. The picture on the right is blocked with the synthesized peptide.

Nanjing BYabscience technology Co.,Ltd



Western blot analysis of lysates from COLO cells, using RPL27A Antibody. The lane on the right is blocked with the synthesized peptide.