



# Ribosomal Protein L26L Polyclonal Antibody

<b>Catalog No</b>	BYab-04135
<b>Isotype</b>	IgG
<b>Reactivity</b>	Human;Mouse;Rat
<b>Applications</b>	WB;IHC;IF;ELISA
<b>Gene Name</b>	RPL26L1
<b>Protein Name</b>	60S ribosomal protein L26-like 1
<b>Immunogen</b>	The antiserum was produced against synthesized peptide derived from human RPL26L. AA range:96-145
<b>Specificity</b>	Ribosomal Protein L26L Polyclonal Antibody detects endogenous levels of Ribosomal Protein L26L protein.
<b>Formulation</b>	Liquid in PBS containing 50% glycerol, 0.5% BSA and 0.02% sodium azide.
<b>Source</b>	Polyclonal, Rabbit,IgG
<b>Purification</b>	The antibody was affinity-purified from rabbit antiserum by affinity-chromatography using epitope-specific immunogen.
<b>Dilution</b>	WB: 1/500 - 1/2000. IHC: 1/100 - 1/300. ELISA: 1/40000.. IF 1:50-200
<b>Concentration</b>	1 mg/ml
<b>Purity</b>	≥90%
<b>Storage Stability</b>	-20°C/1 year
<b>Synonyms</b>	RPL26L1; RPL26P1; 60S ribosomal protein L26-like 1
<b>Observed Band</b>	20kD
<b>Cell Pathway</b>	cytosol,large ribosomal subunit,cytosolic large ribosomal subunit,extracellular exosome,
<b>Tissue Specificity</b>	Lung,Umbilical cord blood,
<b>Function</b>	similarity:Belongs to the ribosomal protein L24P family.,
<b>Background</b>	This gene encodes a protein that shares high sequence similarity with ribosomal protein L26. Alternative splicing results in multiple transcript variants encoding the same protein. [provided by RefSeq, Dec 2015],
<b>matters needing attention</b>	Avoid repeated freezing and thawing!

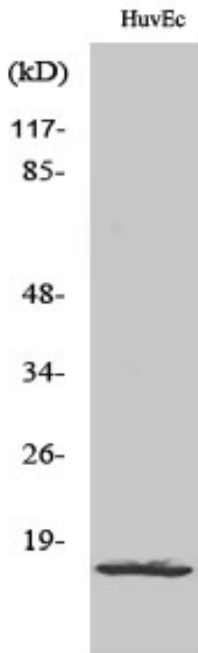
Nanjing BYabscience technology Co.,Ltd



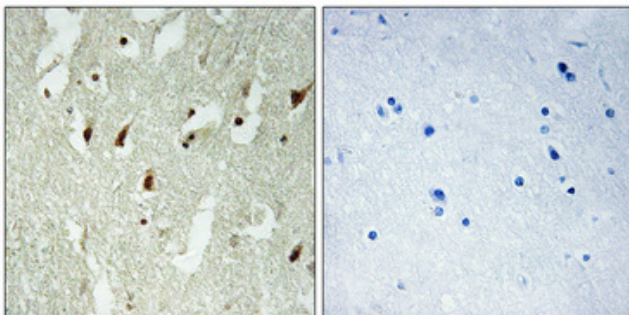
**Usage suggestions**

This product can be used in immunological reaction related experiments. For more information, please consult technical personnel.

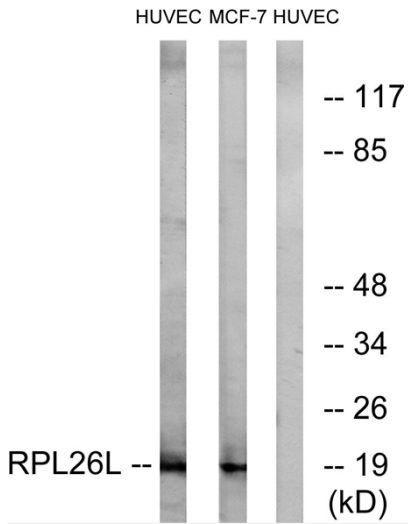
**Products Images**



Western Blot analysis of various cells using Ribosomal Protein L26L Polyclonal Antibody diluted at 1:2000



Immunohistochemical analysis of paraffin-embedded Human brain. Antibody was diluted at 1:100(4° overnight). High-pressure and temperature Tris-EDTA,pH8.0 was used for antigen retrieval. Negative contrl (right) obtained from antibody was pre-absorbed by immunogen peptide.



Western blot analysis of lysates from HUVEC and MCF-7 cells, using RPL26L Antibody. The lane on the right is blocked with the synthesized peptide.