



Ribosomal Protein L22 Polyclonal Antibody

Catalog No	BYab-04133
Isotype	IgG
Reactivity	Human;Mouse;Rat
Applications	IHC;IF;ELISA
Gene Name	RPL22
Protein Name	60S ribosomal protein L22
Immunogen	The antiserum was produced against synthesized peptide derived from human RPL22. AA range:51-100
Specificity	Ribosomal Protein L22 Polyclonal Antibody detects endogenous levels of Ribosomal Protein L22 protein.
Formulation	Liquid in PBS containing 50% glycerol, 0.5% BSA and 0.02% sodium azide.
Source	Polyclonal, Rabbit,IgG
Purification	The antibody was affinity-purified from rabbit antiserum by affinity-chromatography using epitope-specific immunogen.
Dilution	IHC: 1/100 - 1/300. ELISA: 1/10000.. IF 1:50-200
Concentration	1 mg/ml
Purity	≥90%
Storage Stability	-20°C/1 year
Synonyms	RPL22; 60S ribosomal protein L22; EBER-associated protein; EAP; Epstein-Barr virus small RNA-associated protein; Heparin-binding protein HBp15
Observed Band	
Cell Pathway	nucleus,cytoplasm,cytosol,ribosome,focal adhesion,cytosolic large ribosomal subunit,intracellular ribonucleoprotein complex,extracellular matrix,extracellular exosome,
Tissue Specificity	Brain,Cervix,Cervix carcinoma,Eye,Placenta,Submandibular gland,
Function	miscellaneous:Binds to Epstein-Barr virus small RNAs and to heparin.,similarity:Belongs to the ribosomal protein L22e family.,
Background	Ribosomes, the organelles that catalyze protein synthesis, consist of a small 40S subunit and a large 60S subunit. Together these subunits are composed of 4 RNA species and approximately 80 structurally distinct proteins. This gene encodes a cytoplasmic ribosomal protein that is a component of the 60S subunit. The protein belongs to the L22E family of ribosomal proteins. Its initiating methionine residue is post-translationally removed. The protein can bind specifically to Epstein-Barr

Nanjing BYabscience technology Co.,Ltd



virus-encoded RNAs (EBERs) 1 and 2. The mouse protein has been shown to be capable of binding to heparin. Transcript variants utilizing alternative polyA signals exist. As is typical for genes encoding ribosomal proteins, there are multiple processed pseudogenes of this gene dispersed through the genome. It was previously thought that this gene mapped to 3q26 and that it was fused to the acute myeloid leukemia 1 (AML1

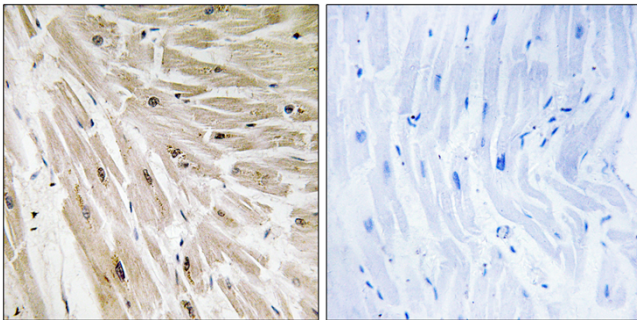
matters needing attention

Avoid repeated freezing and thawing!

Usage suggestions

This product can be used in immunological reaction related experiments. For more information, please consult technical personnel.

Products Images



Immunohistochemistry analysis of paraffin-embedded human heart tissue, using RPL22 Antibody. The picture on the right is blocked with the synthesized peptide.