



# Ribosomal Protein L14 Polyclonal Antibody

<b>Catalog No</b>	BYab-04129
<b>Isotype</b>	IgG
<b>Reactivity</b>	Human;Mouse;Rat
<b>Applications</b>	WB;ELISA;IHC
<b>Gene Name</b>	RPL14
<b>Protein Name</b>	60S ribosomal protein L14
<b>Immunogen</b>	The antiserum was produced against synthesized peptide derived from human RPL14. AA range:71-120
<b>Specificity</b>	Ribosomal Protein L14 Polyclonal Antibody detects endogenous levels of Ribosomal Protein L14 protein.
<b>Formulation</b>	Liquid in PBS containing 50% glycerol, 0.5% BSA and 0.02% sodium azide.
<b>Source</b>	Polyclonal, Rabbit,IgG
<b>Purification</b>	The antibody was affinity-purified from rabbit antiserum by affinity-chromatography using epitope-specific immunogen.
<b>Dilution</b>	WB 1:500-2000;IHC-p 1:50-300; ELISA 2000-20000
<b>Concentration</b>	1 mg/ml
<b>Purity</b>	≥90%
<b>Storage Stability</b>	-20°C/1 year
<b>Synonyms</b>	RPL14; 60S ribosomal protein L14; CAG-ISL 7
<b>Observed Band</b>	26kD
<b>Cell Pathway</b>	cytoplasm,cytosol,ribosome,cell-cell adherens junction,membrane,cytosolic large ribosomal subunit,extracellular exosome,
<b>Tissue Specificity</b>	Brain,Cervix carcinoma,Dermoid cancer,Epithelium,Kidney,Muscle,Ovary,Pancreas,Skin,
<b>Function</b>	polymorphism:The poly-Ala stretch is highly polymorphic.,similarity:Belongs to the ribosomal protein L14e family.,
<b>Background</b>	Ribosomes, the organelles that catalyze protein synthesis, consist of a small 40S subunit and a large 60S subunit. Together these subunits are composed of 4 RNA species and approximately 80 structurally distinct proteins. This gene encodes a ribosomal protein that is a component of the 60S subunit. The protein belongs to the L14E family of ribosomal proteins. It contains a basic region-leucine zipper (bZIP)-like domain. The protein is located in the cytoplasm. This gene contains a trinucleotide (GCT) repeat tract whose length is highly polymorphic; these triplet repeats result in a stretch of alanine residues in the encoded protein. Transcript

Nanjing BYabscience technology Co.,Ltd



variants utilizing alternative polyA signals and alternative 5'-terminal exons exist but all encode the same protein. As is typical for genes encoding ribosomal proteins, there are multiple processed pseudogenes of this gene dispersed through the genome.

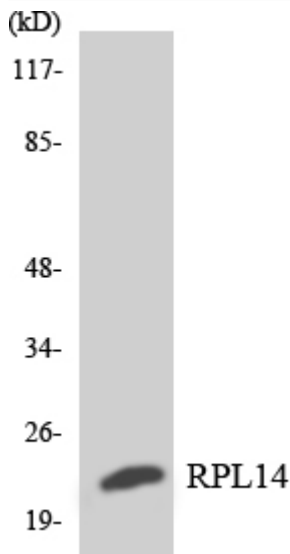
**matters needing attention**

Avoid repeated freezing and thawing!

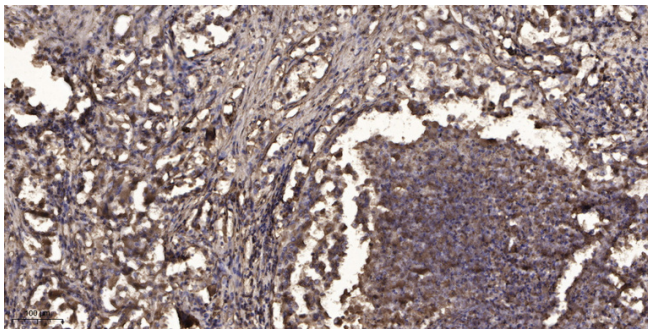
**Usage suggestions**

This product can be used in immunological reaction related experiments. For more information, please consult technical personnel.

## Products Images



Western blot analysis of the lysates from Jurkat cells using RPL14 antibody.



Immunohistochemical analysis of paraffin-embedded human Squamous cell carcinoma of lung. 1, Antibody was diluted at 1:200(4° overnight). 2, Tris-EDTA,pH9.0 was used for antigen retrieval. 3,Secondary antibody was diluted at 1:200(room temperature, 45min).