



Ribosomal Protein L11 Polyclonal Antibody

Catalog No	BYab-04127
Isotype	IgG
Reactivity	Human;Mouse;Rat
Applications	WB;ELISA;IHC
Gene Name	RPL11
Protein Name	60S ribosomal protein L11
Immunogen	Synthesized peptide derived from Ribosomal Protein L11 . at AA range: 100-180
Specificity	Ribosomal Protein L11 Polyclonal Antibody detects endogenous levels of Ribosomal Protein L11 protein.
Formulation	Liquid in PBS containing 50% glycerol, 0.5% BSA and 0.02% sodium azide.
Source	Polyclonal, Rabbit,IgG
Purification	The antibody was affinity-purified from rabbit antiserum by affinity-chromatography using epitope-specific immunogen.
Dilution	WB 1:500-2000;IHC-p 1:50-300; ELISA 2000-20000
Concentration	1 mg/ml
Purity	≥90%
Storage Stability	-20°C/1 year
Synonyms	RPL11; 60S ribosomal protein L11; CLL-associated antigen KW-12
Observed Band	20kD
Cell Pathway	Nucleus, nucleolus . Cytoplasm .
Tissue Specificity	Amygdala,Cervix carcinoma,Tonsil,
Function	disease:Defects in RPL11 are the cause of Diamond-Blackfan anemia type 7 (DBA7) [MIM:612562]. DBA7 is a form of Diamond-Blackfan anemia, a congenital non-regenerative hypoplastic anemia that usually presents early in infancy. Diamond-Blackfan anemia is characterized by a moderate to severe macrocytic anemia, erythroblastopenia, and an increased risk of malignancy. 30 to 40% of Diamond-Blackfan anemia patients present with short stature and congenital anomalies, the most frequent being craniofacial (Pierre-Robin syndrome and cleft palate), thumb and urogenital anomalies.,function: Binds to 5S ribosomal RNA (By similarity). Required for rRNA maturation and formation of the 60S ribosomal subunits.,similarity: Belongs to the ribosomal protein L5P family.,

Nanjing BYabscience technology Co.,Ltd



Background

Ribosomes, the organelles that catalyze protein synthesis, consist of a small 40S subunit and a large 60S subunit. Together these subunits are composed of 4 RNA species and approximately 80 structurally distinct proteins. This gene encodes a ribosomal protein that is a component of the 60S subunit. The protein belongs to the L5P family of ribosomal proteins. It is located in the cytoplasm. The protein probably associates with the 5S rRNA. Alternatively spliced transcript variants encoding different isoforms have been found for this gene. As is typical for genes encoding ribosomal proteins, there are multiple processed pseudogenes of this gene dispersed through the genome. [provided by RefSeq, Dec 2010],

matters needing attention

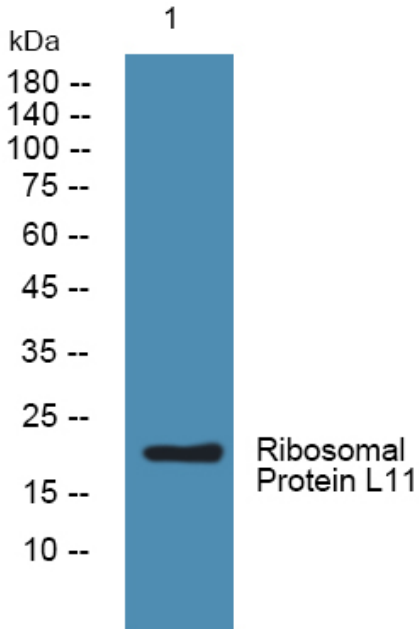
Avoid repeated freezing and thawing!

Usage suggestions

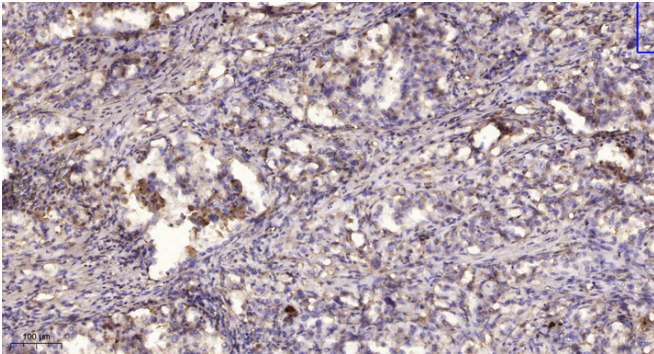
This product can be used in immunological reaction related experiments. For more information, please consult technical personnel.



Products Images



Western blot analysis of lysates from A431 cells, primary antibody was diluted at 1:1000, 4° over night



Immunohistochemical analysis of paraffin-embedded human lung cancer. 1, Antibody was diluted at 1:200(4° overnight). 2, Tris-EDTA, pH9.0 was used for antigen retrieval. 3, Secondary antibody was diluted at 1:200(room temperature, 45min).