



# RGS5 Polyclonal Antibody

<b>Catalog No</b>	BYab-04124
<b>Isotype</b>	IgG
<b>Reactivity</b>	Human;Mouse;Rat
<b>Applications</b>	WB;IHC;IF;ELISA
<b>Gene Name</b>	RGS5
<b>Protein Name</b>	Regulator of G-protein signaling 5
<b>Immunogen</b>	The antiserum was produced against synthesized peptide derived from human RGS5. AA range:89-138
<b>Specificity</b>	RGS5 Polyclonal Antibody detects endogenous levels of RGS5 protein.
<b>Formulation</b>	Liquid in PBS containing 50% glycerol, 0.5% BSA and 0.02% sodium azide.
<b>Source</b>	Polyclonal, Rabbit,IgG
<b>Purification</b>	The antibody was affinity-purified from rabbit antiserum by affinity-chromatography using epitope-specific immunogen.
<b>Dilution</b>	WB: 1/500 - 1/2000. IHC: 1/100 - 1/300. ELISA: 1/20000.. IF 1:50-200
<b>Concentration</b>	1 mg/ml
<b>Purity</b>	≥90%
<b>Storage Stability</b>	-20°C/1 year
<b>Synonyms</b>	RGS5; Regulator of G-protein signaling 5; RGS5
<b>Observed Band</b>	20kD
<b>Cell Pathway</b>	[Isoform 1]: Cytoplasm . Membrane .; [Isoform 2]: Cytoplasm .
<b>Tissue Specificity</b>	Aorta,Brain,Human cervix,Liver,Neuroblastoma,Normal aorta,
<b>Function</b>	function:Inhibits signal transduction by increasing the GTPase activity of G protein alpha subunits thereby driving them into their inactive GDP-bound form. Binds to G(i)-alpha and G(o)-alpha, but not to G(s)-alpha.,similarity:Contains 1 RGS domain.,
<b>Background</b>	This gene encodes a member of the regulators of G protein signaling (RGS) family. The RGS proteins are signal transduction molecules which are involved in the regulation of heterotrimeric G proteins by acting as GTPase activators. This gene is a hypoxia-inducible factor-1 dependent, hypoxia-induced gene which is involved in the induction of endothelial apoptosis. This gene is also one of three genes on chromosome 1q contributing to elevated blood pressure. Alternatively

Nanjing BYabscience technology Co.,Ltd



spliced transcript variants have been identified. [provided by RefSeq, Dec 2011],

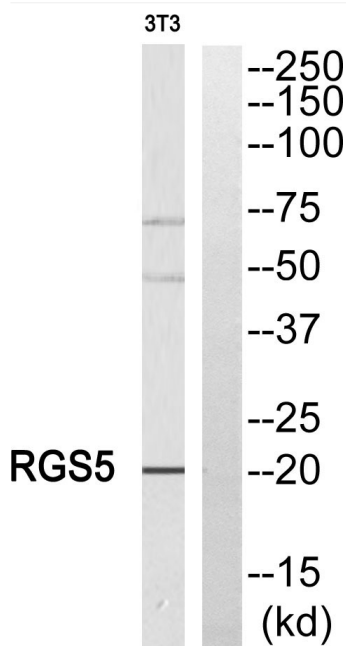
**matters needing attention**

Avoid repeated freezing and thawing!

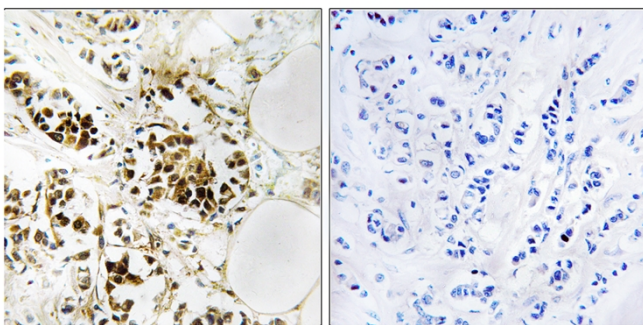
**Usage suggestions**

This product can be used in immunological reaction related experiments. For more information, please consult technical personnel.

## Products Images

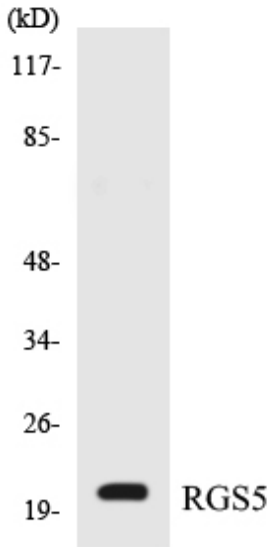


Western blot analysis of RGS5 Antibody. The lane on the right is blocked with the RGS5 peptide.



Immunohistochemistry analysis of paraffin-embedded human breast carcinoma, using RGS5 Antibody. The lane on the right is blocked with the RGS5 peptide.

Nanjing BYabscience technology Co.,Ltd



Western blot analysis of the lysates from HepG2 cells using RGS5 antibody.