



RGS12 Polyclonal Antibody

Catalog No	BYab-04121
Isotype	IgG
Reactivity	Human;Mouse;Rat
Applications	WB;ELISA;IHC
Gene Name	RGS12
Protein Name	Regulator of G-protein signaling 12
Immunogen	The antiserum was produced against synthesized peptide derived from human RGS12. AA range:141-190
Specificity	RGS12 Polyclonal Antibody detects endogenous levels of RGS12 protein.
Formulation	Liquid in PBS containing 50% glycerol, 0.5% BSA and 0.02% sodium azide.
Source	Polyclonal, Rabbit,IgG
Purification	The antibody was affinity-purified from rabbit antiserum by affinity-chromatography using epitope-specific immunogen.
Dilution	WB 1:500-2000;IHC-p 1:50-300; ELISA 2000-20000
Concentration	1 mg/ml
Purity	≥90%
Storage Stability	-20°C/1 year
Synonyms	RGS12; Regulator of G-protein signaling 12; RGS12
Observed Band	160kD
Cell Pathway	Nucleus . Cytoplasm . Cell projection, dendrite . Cell junction, synapse .; [Isoform 5]: Nucleus matrix . Also localized to discrete nuclear foci that are distinct from sites of RNA processing, PML nuclear bodies, and PcG domains. .
Tissue Specificity	Isoform 3 is brain specific.
Function	function:Inhibits signal transduction by increasing the GTPase activity of G protein alpha subunits thereby driving them into their inactive GDP-bound form.,PTM:Phosphorylated upon DNA damage, probably by ATM or ATR.,similarity:Contains 1 GoLoco domain.,similarity:Contains 1 PDZ (DHR) domain.,similarity:Contains 1 PID domain.,similarity:Contains 1 RGS domain.,similarity:Contains 2 RBD (Ras-binding) domains.,tissue specificity:Isoform 3 is brain specific.,
Background	This gene encodes a member of the 'regulator of G protein signaling' (RGS) gene family. The encoded protein may function as a

Nanjing BYabscience technology Co.,Ltd



guanosine triphosphatase (GTPase)-activating protein as well as a transcriptional repressor. This protein may play a role in tumorigenesis. Multiple transcript variants encoding distinct isoforms have been identified for this gene. Other alternative splice variants have been described but their biological nature has not been determined. [provided by RefSeq, Jul 2008],

matters needing attention

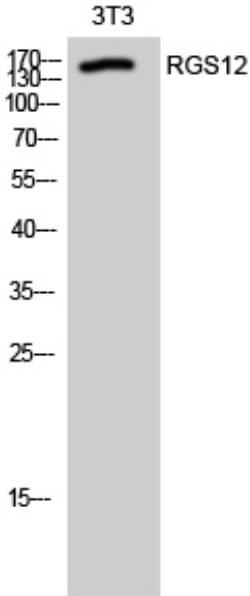
Avoid repeated freezing and thawing!

Usage suggestions

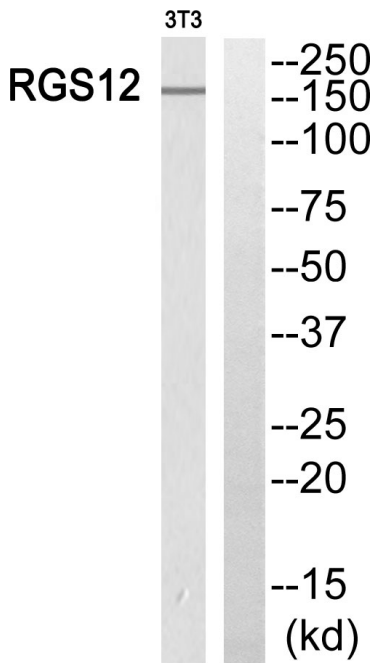
This product can be used in immunological reaction related experiments. For more information, please consult technical personnel.



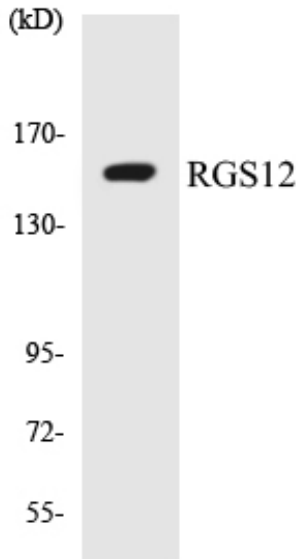
Products Images



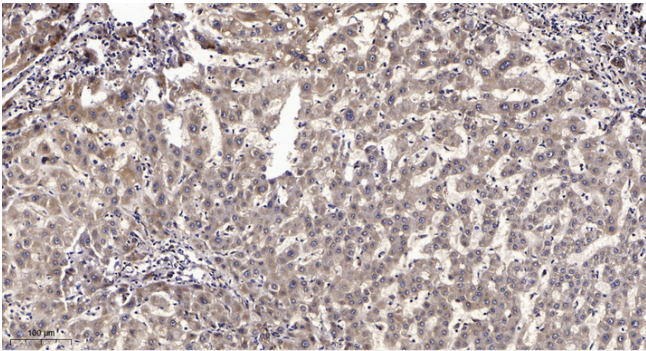
Western Blot analysis of 3T3 cells using RGS12 Polyclonal Antibody cells nucleus extracted by Minute TM Cytoplasmic and Nuclear Fractionation kit (SC-003, Inventbiotech, MN, USA).



Western blot analysis of RGS12 Antibody. The lane on the right is blocked with the RGS12 peptide.



Western blot analysis of the lysates from HUVEC cells using RGS12 antibody.



Immunohistochemical analysis of paraffin-embedded human liver cancer. 1, Antibody was diluted at 1:200(4° overnight). 2, Tris-EDTA, pH9.0 was used for antigen retrieval. 3, Secondary antibody was diluted at 1:200(room temperature, 45min).