



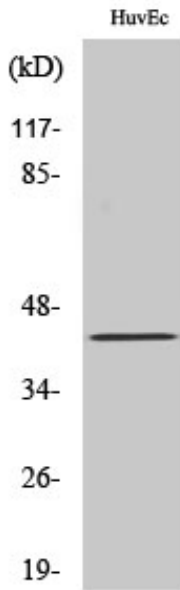
RFPL4A Polyclonal Antibody

Catalog No	BYab-04117
Isotype	IgG
Reactivity	Human;Rat;Mouse;
Applications	WB;ELISA;IHC
Gene Name	RFPL4A
Protein Name	Ret finger protein-like 4A
Immunogen	The antiserum was produced against synthesized peptide derived from human RFPL4A. AA range:155-204
Specificity	RFPL4A Polyclonal Antibody detects endogenous levels of RFPL4A protein.
Formulation	Liquid in PBS containing 50% glycerol, 0.5% BSA and 0.02% sodium azide.
Source	Polyclonal, Rabbit,IgG
Purification	The antibody was affinity-purified from rabbit antiserum by affinity-chromatography using epitope-specific immunogen.
Dilution	WB 1:500-2000;IHC-p 1:50-300; ELISA 2000-20000
Concentration	1 mg/ml
Purity	≥90%
Storage Stability	-20°C/1 year
Synonyms	RFPL4A; RFPL4; RNF210; Ret finger protein-like 4A; RING finger protein 210
Observed Band	42kD
Cell Pathway	Cytoplasm . Nucleus .
Tissue Specificity	
Function	
Background	The ret finger protein-like 4 gene, Rfpl4, encodes a putative E3 ubiquitin-protein ligase expressed in adult germ cells.
matters needing attention	Avoid repeated freezing and thawing!
Usage suggestions	This product can be used in immunological reaction related experiments. For more information, please consult technical personnel.

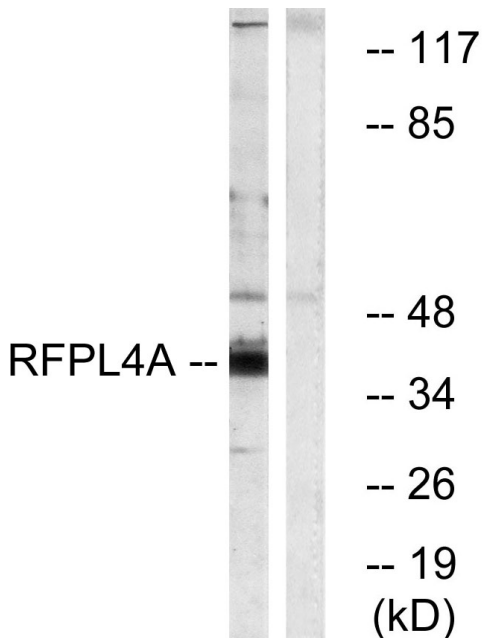
Nanjing BYabscience technology Co.,Ltd



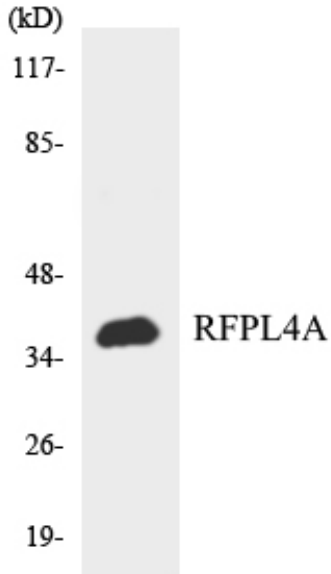
Products Images



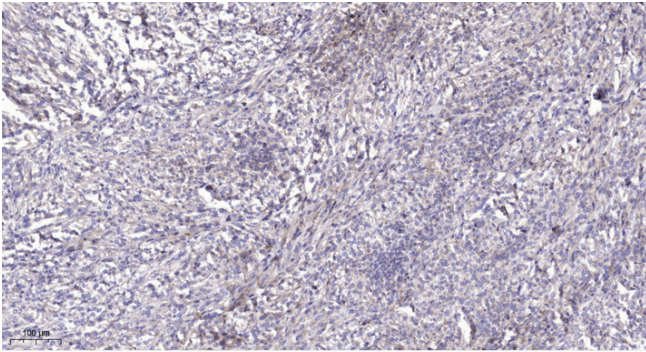
Western Blot analysis of various cells using RFPL4A Polyclonal Antibody



Western blot analysis of lysates from HUVEC cells, using RFPL4A Antibody. The lane on the right is blocked with the synthesized peptide.



Western blot analysis of the lysates from HeLa cells using RFPL4A antibody.



Immunohistochemical analysis of paraffin-embedded human Colon cancer. 1, Antibody was diluted at 1:200(4° overnight). 2, Tris-EDTA,pH9.0 was used for antigen retrieval. 3,Secondary antibody was diluted at 1:200(room temperature, 45min).