



Reg IV Polyclonal Antibody

Catalog No	BYab-04115
Isotype	IgG
Reactivity	Human;Rat;Mouse;
Applications	WB;IHC;IF;ELISA
Gene Name	REG4
Protein Name	Regenerating islet-derived protein 4
Immunogen	Synthesized peptide derived from the Internal region of human Reg IV.
Specificity	Reg IV Polyclonal Antibody detects endogenous levels of Reg IV protein.
Formulation	Liquid in PBS containing 50% glycerol, 0.5% BSA and 0.02% sodium azide.
Source	Polyclonal, Rabbit,IgG
Purification	The antibody was affinity-purified from rabbit antiserum by affinity-chromatography using epitope-specific immunogen.
Dilution	IHC: 1/100 - 1/300. ELISA: 1/40000.. IF 1:50-200
Concentration	1 mg/ml
Purity	≥90%
Storage Stability	-20°C/1 year
Synonyms	REG4; GISP; RELP; Regenerating islet-derived protein 4; REG-4; Gastrointestinal secretory protein; REG-like protein; Regenerating islet-derived protein IV; Reg IV
Observed Band	
Cell Pathway	Secreted .
Tissue Specificity	Highly expressed in the gastrointestinal tract including the duodenum, jejunum, ileum, ileocecum, appendix, descending colon, pancreas and small intestine. Weakly expressed in normal colon and stomach. Strongly expressed in most colorectal tumors than in normal colon. Preferentially expressed in mucinous tumors and in some cases neuro-endocrine tumors. Expressed in mucus-secreting cells and enterocyte-like cells. In small intestine expressed at the basal perinuclear zone of goblet cells.
Function	function:May be involved in inflammatory and metaplastic responses of the gastrointestinal epithelium.,induction:Up-regulated by mucosal injury from active Crohn's disease or ulcerative colitis. Up-regulated in colorectal tumors. Up-regulated in epithelial cells at regenerating margins of peptic ulcers in the

Nanjing BYabscience technology Co.,Ltd



stomach and duodenum.,online information:Regenerating protein IV,similarity:Contains 1 C-type lectin domain.,tissue specificity:Highly expressed in the gastrointestinal tract including the duodenum, jejunum, ileum, ileocecum, appendix, descending colon, pancreas and small intestine. Weakly expressed in normal colon and stomach. Strongly expressed in most colorectal tumors than in normal colon. Preferentialy expressed in mucinous tumors and in some cases neuro-endocrine tumors. Expressed in mucus-secreting cells and enterocyte-like cells. In small intestine expressed at the basal per

Background

function:May be involved in inflammatory and metaplastic responses of the gastrointestinal epithelium.,induction:Up-regulated by mucosal injury from active Crohn's disease or ulcerative colitis. Up-regulated in colorectal tumors. Up-regulated in epithelial cells at regenerating margins of peptic ulcers in the stomach and duodenum.,online information:Regenerating protein IV,similarity:Contains 1 C-type lectin domain.,tissue specificity:Highly expressed in the gastrointestinal tract including the duodenum, jejunum, ileum, ileocecum, appendix, descending colon, pancreas and small intestine. Weakly expressed in normal colon and stomach. Strongly expressed in most colorectal tumors than in normal colon. Preferentialy expressed in mucinous tumors and in some cases neuro-endocrine tumors. Expressed in mucus-secreting cells and enterocyte-like cells. In small intestine expressed at the basal perinuclear zone of goblet cells.,

matters needing attention

Avoid repeated freezing and thawing!

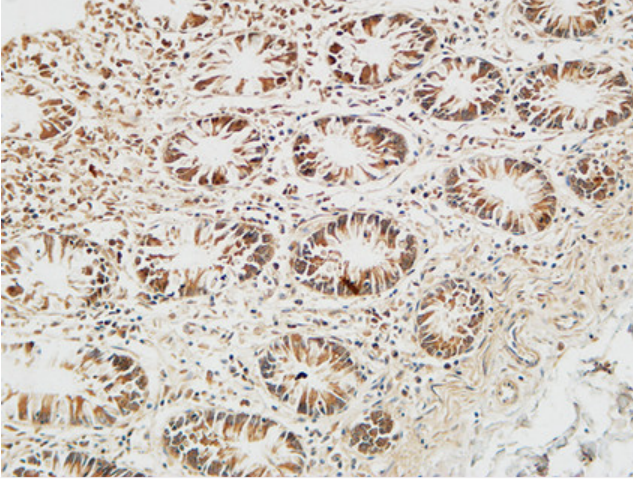
Usage suggestions

This product can be used in immunological reaction related experiments. For more information, please consult technical personnel.

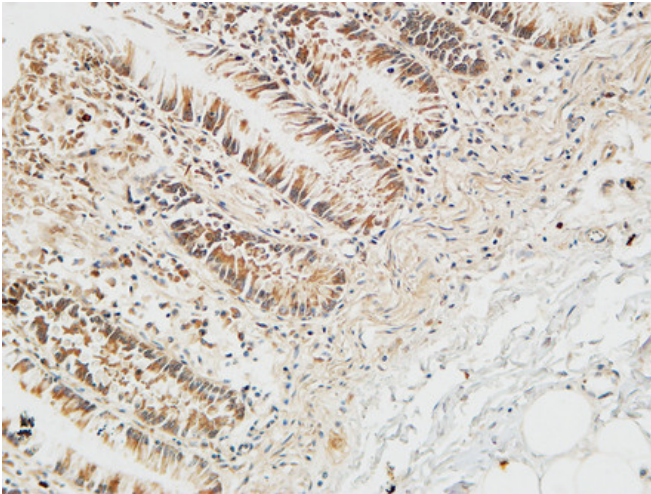
Nanjing BYabscience technology Co.,Ltd



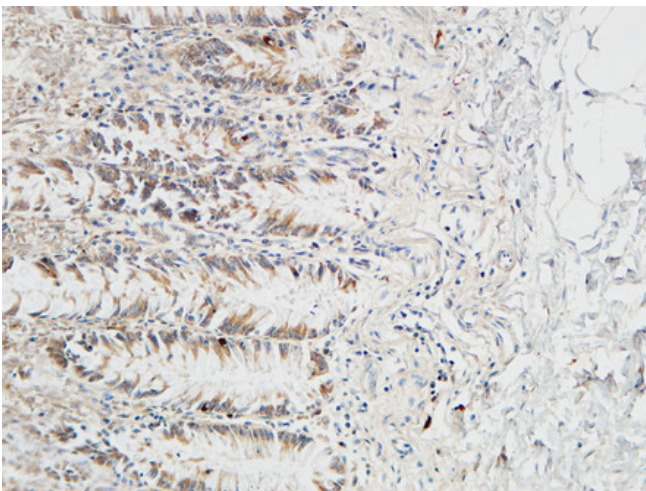
Products Images



Immunohistochemical analysis of paraffin-embedded Human colon. 1, Antibody was diluted at 1:100(4° overnight). 2, High-pressure and temperature EDTA, pH8.0 was used for antigen retrieval. 3, Secondary antibody was diluted at 1:200(room temperature, 30min).



Immunohistochemical analysis of paraffin-embedded Human colon. 1, Antibody was diluted at 1:100(4° overnight). 2, High-pressure and temperature EDTA, pH8.0 was used for antigen retrieval. 3, Secondary antibody was diluted at 1:200(room temperature, 30min).



Immunohistochemical analysis of paraffin-embedded Human colon. 1, Antibody was diluted at 1:100(4° overnight). 2, High-pressure and temperature EDTA, pH8.0 was used for antigen retrieval. 3, Secondary antibody was diluted at 1:200(room temperature, 30min).