



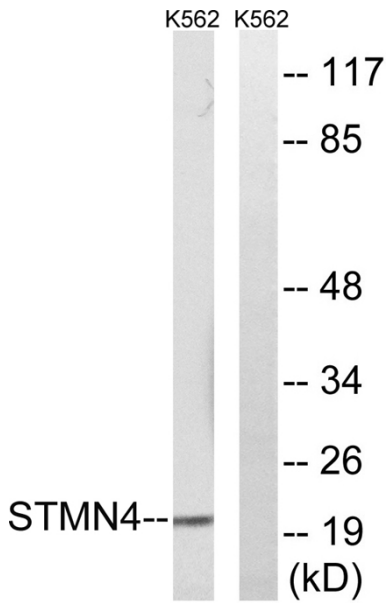
RB3 Polyclonal Antibody

Catalog No	BYab-04111
Isotype	IgG
Reactivity	Human;Mouse;Rat
Applications	WB;IHC;IF;ELISA
Gene Name	STMN4
Protein Name	Stathmin-4
Immunogen	The antiserum was produced against synthesized peptide derived from human STMN4. AA range:140-189
Specificity	RB3 Polyclonal Antibody detects endogenous levels of RB3 protein.
Formulation	Liquid in PBS containing 50% glycerol, 0.5% BSA and 0.02% sodium azide.
Source	Polyclonal, Rabbit,IgG
Purification	The antibody was affinity-purified from rabbit antiserum by affinity-chromatography using epitope-specific immunogen.
Dilution	WB: 1/500 - 1/2000. IHC: 1/100 - 1/300. ELISA: 1/40000.. IF 1:50-200
Concentration	1 mg/ml
Purity	≥90%
Storage Stability	-20°C/1 year
Synonyms	STMN4; Stathmin-4; Stathmin-like protein B3; RB3
Observed Band	22kD
Cell Pathway	Golgi apparatus . Cell projection, growth cone . Cell projection, axon .
Tissue Specificity	Amygdala,Brain,
Function	similarity:Belongs to the stathmin family.,
Background	similarity:Belongs to the stathmin family.,
matters needing attention	Avoid repeated freezing and thawing!
Usage suggestions	This product can be used in immunological reaction related experiments. For more information, please consult technical personnel.

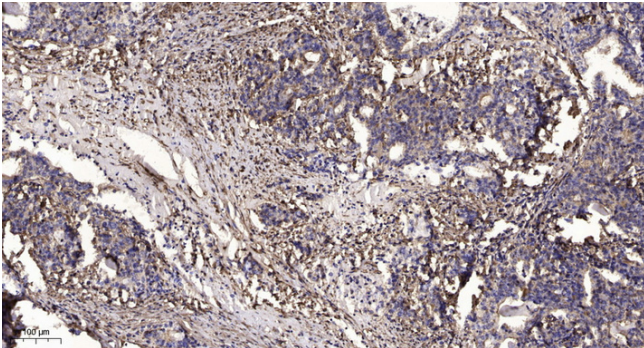
Nanjing BYabscience technology Co.,Ltd



Products Images



Western blot analysis of lysates from K562 cells, using STMN4 Antibody. The lane on the right is blocked with the synthesized peptide.



Immunohistochemical analysis of paraffin-embedded human Gastric adenocarcinoma. 1, Antibody was diluted at 1:200(4° overnight). 2, Tris-EDTA,pH9.0 was used for antigen retrieval. 3,Secondary antibody was diluted at 1:200(room temperature, 45min).