



Raftlin Polyclonal Antibody

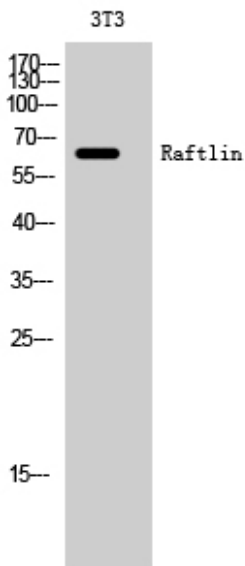
Catalog No	BYab-04110
Isotype	IgG
Reactivity	Human;Rat;Mouse;
Applications	WB;IHC
Gene Name	RFTN1
Protein Name	Raftlin
Immunogen	The antiserum was produced against synthesized peptide derived from human RFTN1. AA range:432-481
Specificity	Raftlin Polyclonal Antibody detects endogenous levels of Raftlin protein.
Formulation	Liquid in PBS containing 50% glycerol, 0.5% BSA and 0.02% sodium azide.
Source	Polyclonal, Rabbit,IgG
Purification	The antibody was affinity-purified from rabbit antiserum by affinity-chromatography using epitope-specific immunogen.
Dilution	WB 1:500-2000;IHC-p 1:50-300
Concentration	1 mg/ml
Purity	≥90%
Storage Stability	-20°C/1 year
Synonyms	RFTN1; KIAA0084; MIG2; Raftlin; Cell migration-inducing gene 2 protein; Raft-linking protein
Observed Band	65kD
Cell Pathway	Cell membrane ; Lipid-anchor . Cytoplasm . Membrane raft . Endosome . Early endosome . Translocates from cytoplasm to cell membrane where it colocalizes with poly (I:C) and then moves to endosomes where it colocalizes with TLR3 (PubMed:21266579). Translocates from cytoplasm to cell membrane where it colocalizes with TLR4 and then together with TLR4 moves to endosomes, upon lipopolysaccharide stimulation (PubMed:27022195). .
Tissue Specificity	Expressed in B-cells (at protein level) (PubMed:12805216). Expressed in dendritic cells and macrophages (PubMed:27022195, PubMed:21266579).
Function	function:May play a pivotal role in the formation and/or maintenance of lipid rafts. May regulate B-cell antigen receptor-mediated signaling.,similarity:Belongs to the raftlin family.,subcellular location:Associates with lipid rafts.,tissue specificity:Specifically expressed by B-cells (at protein level),.

Nanjing BYabscience technology Co.,Ltd

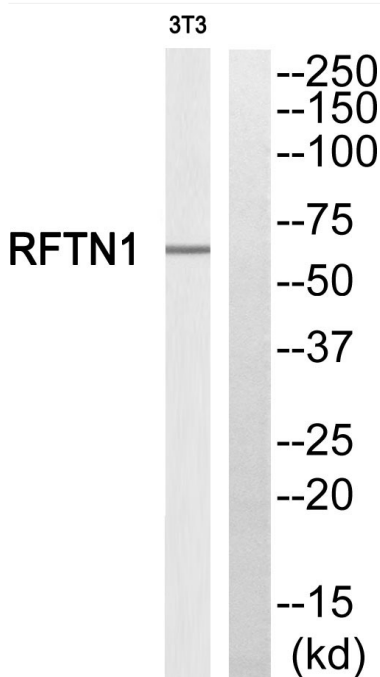


Background	function:May play a pivotal role in the formation and/or maintenance of lipid rafts. May regulate B-cell antigen receptor-mediated signaling.,similarity:Belongs to the raftlin family.,subcellular location:Associates with lipid rafts.,tissue specificity:Specifically expressed by B-cells (at protein level),.
matters needing attention	Avoid repeated freezing and thawing!
Usage suggestions	This product can be used in immunological reaction related experiments. For more information, please consult technical personnel.

Products Images

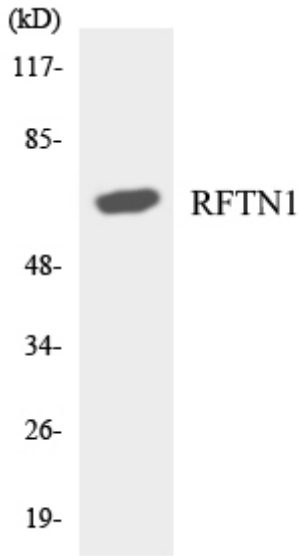


Western Blot analysis of 3T3 cells using Raftlin Polyclonal Antibody

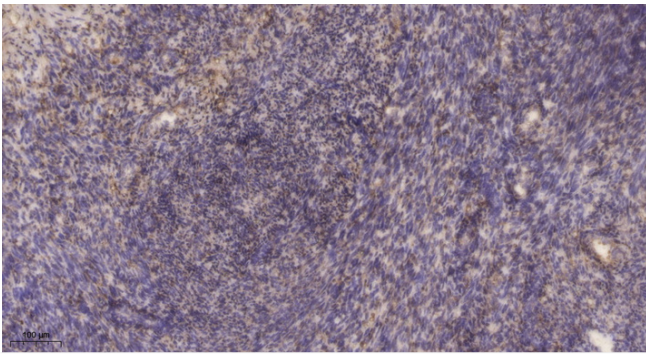


Western blot analysis of RFTN1 Antibody. The lane on the right is blocked with the RFTN1 peptide.

Nanjing BYabscience technology Co.,Ltd



Western blot analysis of the lysates from RAW264.7 cells using RFTN1 antibody.



Immunohistochemical analysis of paraffin-embedded human uterus. 1, Antibody was diluted at 1:200(4° overnight). 2, Tris-EDTA, pH9.0 was used for antigen retrieval. 3, Secondary antibody was diluted at 1:200(room temperature, 45min).