



# RACK7 Polyclonal Antibody

<b>Catalog No</b>	BYab-04109
<b>Isotype</b>	IgG
<b>Reactivity</b>	Human;Rat;Mouse;
<b>Applications</b>	WB;ELISA;IHC
<b>Gene Name</b>	ZMYND8
<b>Protein Name</b>	Protein kinase C-binding protein 1
<b>Immunogen</b>	The antiserum was produced against synthesized peptide derived from human PKCB1. AA range:581-630
<b>Specificity</b>	RACK7 Polyclonal Antibody detects endogenous levels of RACK7 protein.
<b>Formulation</b>	Liquid in PBS containing 50% glycerol, 0.5% BSA and 0.02% sodium azide.
<b>Source</b>	Polyclonal, Rabbit,IgG
<b>Purification</b>	The antibody was affinity-purified from rabbit antiserum by affinity-chromatography using epitope-specific immunogen.
<b>Dilution</b>	WB 1:500-2000;IHC-p 1:50-300; ELISA 2000-20000
<b>Concentration</b>	1 mg/ml
<b>Purity</b>	≥90%
<b>Storage Stability</b>	-20°C/1 year
<b>Synonyms</b>	ZMYND8; KIAA1125; PRKCBP1; RACK7; Protein kinase C-binding protein 1; Cutaneous T-cell lymphoma-associated antigen se14-3; CTCL-associated antigen se14-3; Rack7; Zinc finger MYND domain-containing protein 8
<b>Observed Band</b>	132kD
<b>Cell Pathway</b>	Nucleus . Cytoplasm . Sequestered in the cytoplasm through the interaction with DBN1. .
<b>Tissue Specificity</b>	Expressed in all tissues examined with highest expression in brain, lung, pancreas, and placenta. Expressed in cutaneous T-cell lymphomas (CTCL).
<b>Function</b>	PTM:Phosphorylated upon DNA damage, probably by ATM or ATR.,similarity:Contains 1 bromo domain.,similarity:Contains 1 MYND-type zinc finger.,similarity:Contains 1 PHD-type zinc finger.,similarity:Contains 1 PWWP domain.,subunit:Interacts in vitro with PRKCB1.,tissue specificity:Expressed in all tissues examined with highest expression in brain, lung, pancreas, and placenta. Expressed in cutaneous T-cell lymphomas (CTCL).,
<b>Background</b>	The protein encoded by this gene is a receptor for activated C-kinase (RACK) protein. The encoded protein has been shown to bind in vitro to activated protein

**Nanjing BYabscience technology Co.,Ltd**



kinase C beta I. In addition, this protein is a cutaneous T-cell lymphoma-associated antigen. Finally, the protein contains a bromodomain and two zinc fingers, and is thought to be a transcriptional regulator. Multiple transcript variants encoding several different isoforms have been found for this gene. [provided by RefSeq, Jul 2008],

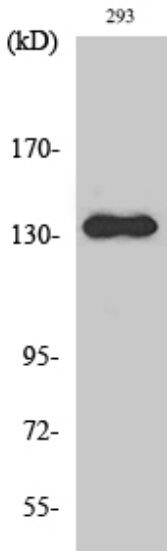
**matters needing attention**

Avoid repeated freezing and thawing!

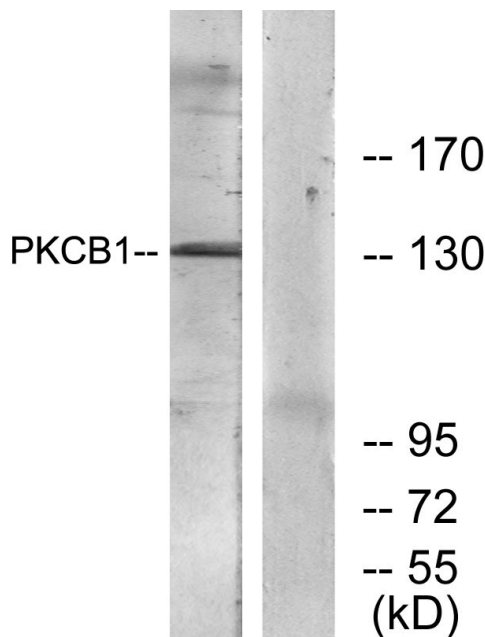
**Usage suggestions**

This product can be used in immunological reaction related experiments. For more information, please consult technical personnel.

**Products Images**

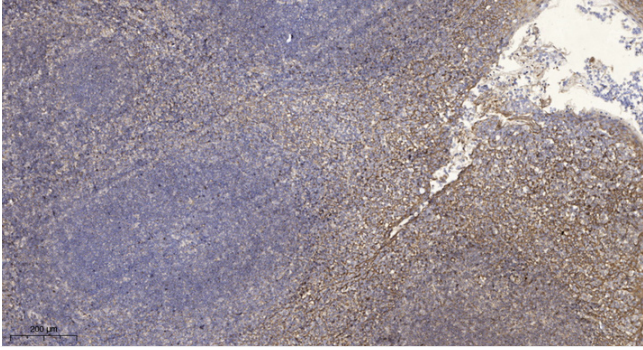


Western Blot analysis of various cells using RACK7 Polyclonal Antibody



Western blot analysis of lysates from 293 cells, using PKCB1 Antibody. The lane on the right is blocked with the synthesized peptide.

**Nanjing BYabscience technology Co.,Ltd**



Immunohistochemical analysis of paraffin-embedded human tonsil. 1, Antibody was diluted at 1:200(4° overnight). 2, Tris-EDTA,pH9.0 was used for antigen retrieval. 3,Secondary antibody was diluted at 1:200(room temperature, 45min).