



Prefoldin 1 Polyclonal Antibody

Catalog No	BYab-04100
Isotype	IgG
Reactivity	Human;Mouse
Applications	WB;IHC;IF;ELISA
Gene Name	PFDN1
Protein Name	Prefoldin subunit 1
Immunogen	The antiserum was produced against synthesized peptide derived from human PFDN1. AA range:1-50
Specificity	Prefoldin 1 Polyclonal Antibody detects endogenous levels of Prefoldin 1 protein.
Formulation	Liquid in PBS containing 50% glycerol, 0.5% BSA and 0.02% sodium azide.
Source	Polyclonal, Rabbit,IgG
Purification	The antibody was affinity-purified from rabbit antiserum by affinity-chromatography using epitope-specific immunogen.
Dilution	WB: 1/500 - 1/2000. IHC: 1/100 - 1/300. ELISA: 1/20000.. IF 1:50-200
Concentration	1 mg/ml
Purity	≥90%
Storage Stability	-20°C/1 year
Synonyms	PFDN1; PFD1; Prefoldin subunit 1
Observed Band	14kD
Cell Pathway	prefoldin complex,
Tissue Specificity	Colon,Thymus,
Function	function: Binds specifically to cytosolic chaperonin (c-CPN) and transfers target proteins to it. Binds to nascent polypeptide chain and promotes folding in an environment in which there are many competing pathways for nonnative proteins.,similarity: Belongs to the prefoldin subunit beta family.,subunit: Heterohexamer of two PFD-alpha type and four PFD-beta type subunits.,
Background	This gene encodes a member of the prefoldin beta subunit family. The encoded protein is one of six subunits of prefoldin, a molecular chaperone complex that binds and stabilizes newly synthesized polypeptides, thereby allowing them to fold correctly. The complex, consisting of two alpha and four beta subunits, forms a

Nanjing BYabscience technology Co.,Ltd



double beta barrel assembly with six protruding coiled-coils. [provided by RefSeq, Jul 2008],

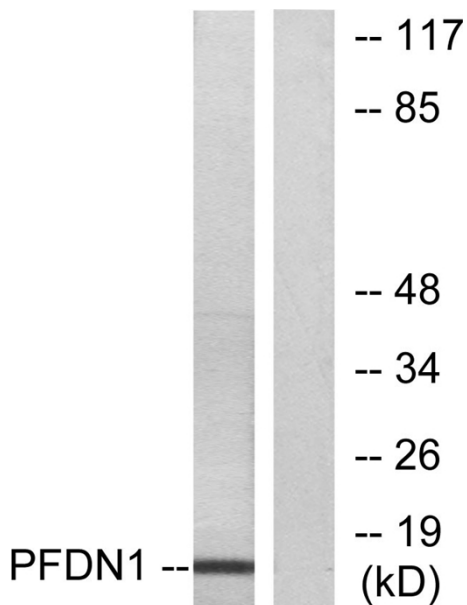
matters needing attention

Avoid repeated freezing and thawing!

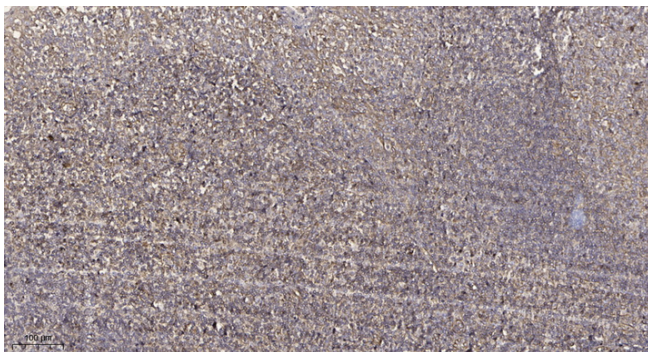
Usage suggestions

This product can be used in immunological reaction related experiments. For more information, please consult technical personnel.

Products Images



Western blot analysis of lysates from RAW264.7 cells, using PFDN1 Antibody. The lane on the right is blocked with the synthesized peptide.



Immunohistochemical analysis of paraffin-embedded human tonsil. 1, Antibody was diluted at 1:200(4° overnight). 2, Tris-EDTA,pH9.0 was used for antigen retrieval. 3,Secondary antibody was diluted at 1:200(room temperature, 30min).

Nanjing BYabscience technology Co.,Ltd