



# Pmp24 Polyclonal Antibody

<b>Catalog No</b>	BYab-04095
<b>Isotype</b>	IgG
<b>Reactivity</b>	Human;Monkey
<b>Applications</b>	WB;IHC;IF;ELISA
<b>Gene Name</b>	PXMP4
<b>Protein Name</b>	Peroxisomal membrane protein 4
<b>Immunogen</b>	The antiserum was produced against synthesized peptide derived from human PXMP4. AA range:15-64
<b>Specificity</b>	Pmp24 Polyclonal Antibody detects endogenous levels of Pmp24 protein.
<b>Formulation</b>	Liquid in PBS containing 50% glycerol, 0.5% BSA and 0.02% sodium azide.
<b>Source</b>	Polyclonal, Rabbit,IgG
<b>Purification</b>	The antibody was affinity-purified from rabbit antiserum by affinity-chromatography using epitope-specific immunogen.
<b>Dilution</b>	WB: 1/500 - 1/2000. IHC: 1/100 - 1/300. ELISA: 1/20000.. IF 1:50-200
<b>Concentration</b>	1 mg/ml
<b>Purity</b>	≥90%
<b>Storage Stability</b>	-20°C/1 year
<b>Synonyms</b>	PXMP4; PMP24; Peroxisomal membrane protein 4; 24 kDa peroxisomal intrinsic membrane protein
<b>Observed Band</b>	24kD
<b>Cell Pathway</b>	Peroxisome membrane ; Multi-pass membrane protein .
<b>Tissue Specificity</b>	Expressed in normal prostate epithelial cells, and androgen-sensitive prostate adenocarcinoma cells. Not expressed in androgen-insensitive prostate adenocarcinoma cells.
<b>Function</b>	similarity:Belongs to the peroxisomal membrane protein PXMP2/4 family.,subunit:Interacts with PEX19.,
<b>Background</b>	similarity:Belongs to the peroxisomal membrane protein PXMP2/4 family.,subunit:Interacts with PEX19.,
<b>matters needing attention</b>	Avoid repeated freezing and thawing!

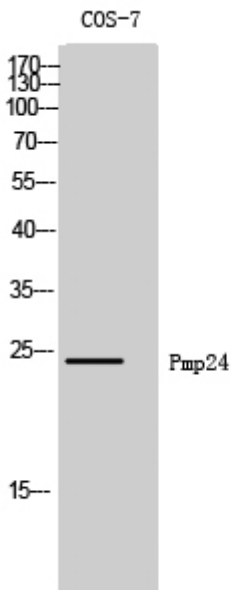
Nanjing BYabscience technology Co.,Ltd



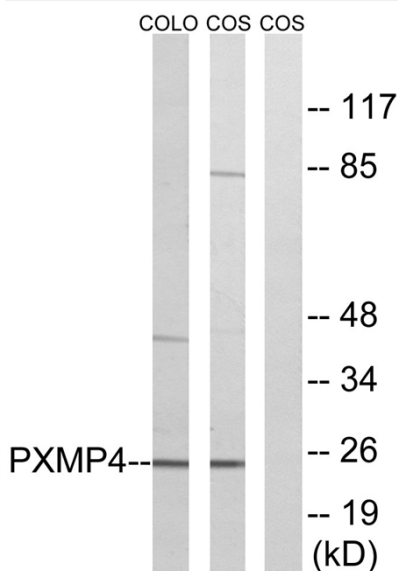
### Usage suggestions

This product can be used in immunological reaction related experiments. For more information, please consult technical personnel.

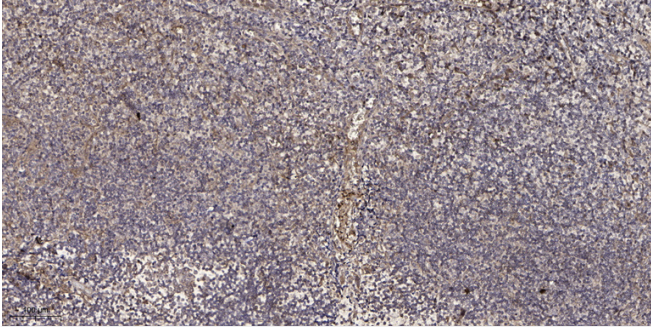
## Products Images



Western Blot analysis of COS-7 cells using Pmp24 Polyclonal Antibody



Western blot analysis of lysates from COS7 and COLO cells, using PXMP4 Antibody. The lane on the right is blocked with the synthesized peptide.



Immunohistochemical analysis of paraffin-embedded human tonsil. 1, Antibody was diluted at 1:200(4° overnight). 2, Tris-EDTA,pH9.0 was used for antigen retrieval. 3,Secondary antibody was diluted at 1:200(room temperature, 30min).